



GSE International Ltd.

Compressor Product Catalog

2025 December



Portable Twin Headed Rocking Piston

ZW50Z12

Open Flow **15.5lpm (0.54cfm)**

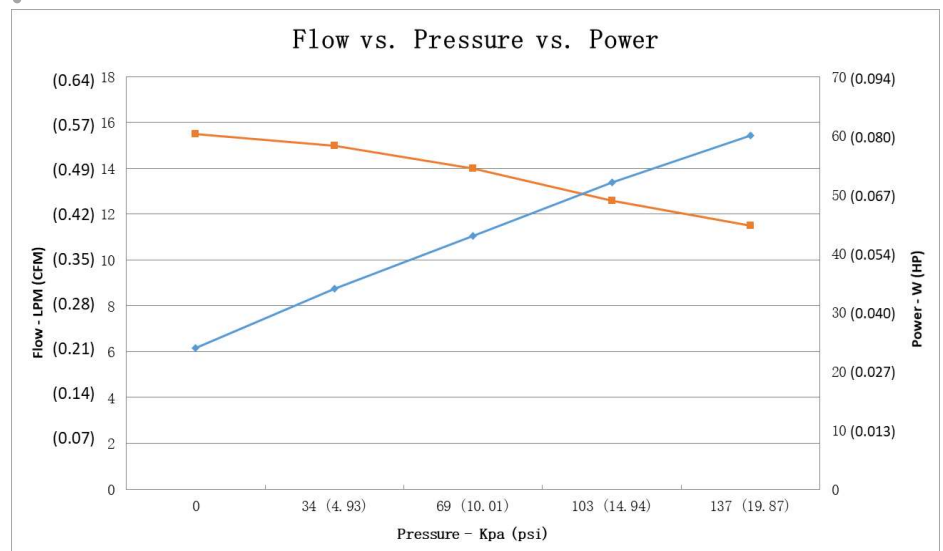
Max. Pressure (INT.) **1.6bar (23psi)**

- Permanently lubricated bearings
- Oil-less, non-lubricated cup and cylinder
- Long-life cup design
- Compact but powerful
- BLDC motor with external control board
- Continuous operation
- Designed for portable oxygen concentrator
- With flexibility for all DC portable device

Specifications

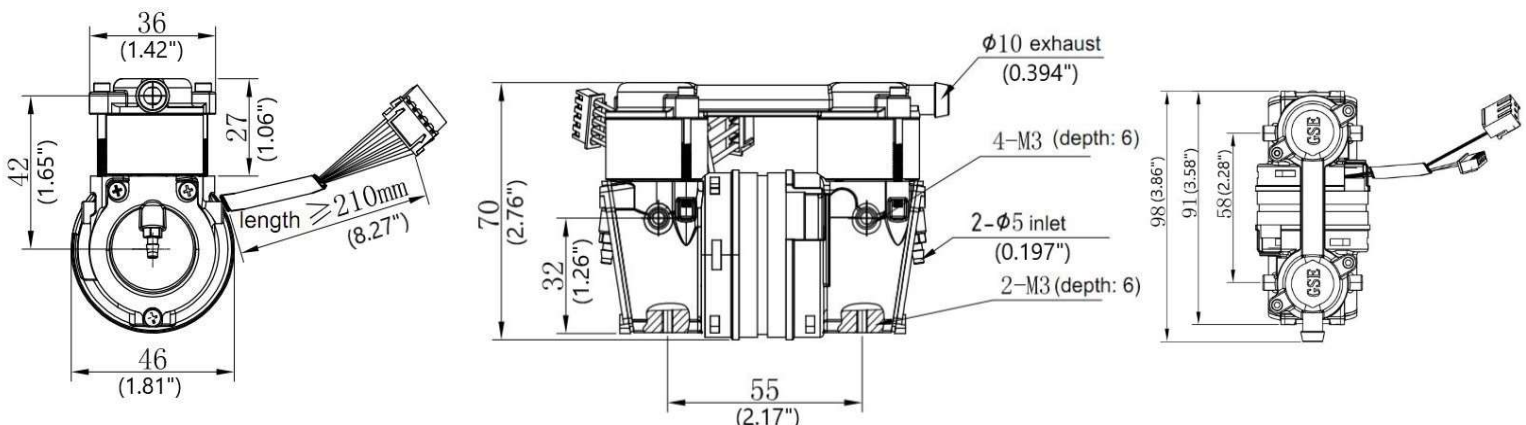
Model	ZW50Z12-12/1.3
Rated Voltage	12VDC
Voltage Range	9-14.5VDC
Rated Input Power	58W (0.078HP)
Rated Input Current	4.8A
Air Flow at rated Pressure	12LPM (0.42CFM)
Max. Continuous Pressure	1.3bar (18.9psi)
Max. Intermit Pressure	1.6bar (14.5psi)
Noise Level	58dBA
Ambinet Temperature	0-40°C
Insulation Class	B
Voltage Protect	<9V, >15V
Current Protect	8.5A
Motor	BLDC
Weight	310g (0.68lbs)

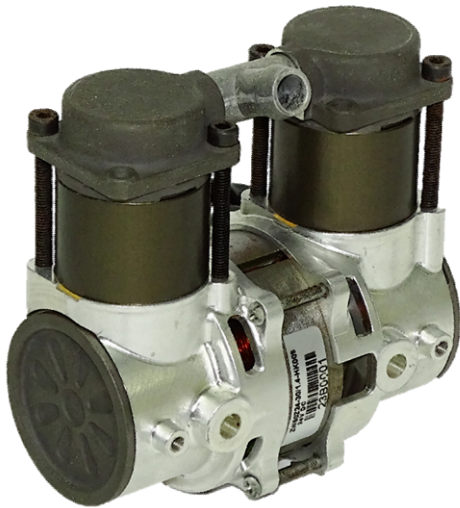
Performance Chart



The information presented in this material is based on technical data and test results of nominal units. Its is believed to be accurate and reliable and is offered as an aid to help in the selection of GSE products. It is the responsibility of the user to determine the suitability of the product for their intended use and the user assumes all risk and liability whatsoever in connection therewith. GSE does not warrant, guarantee or assume any obligation or liability in connection with this information.

Technical Drawings





Portable Twin Headed Rocking Piston

Open Flow **ZW60Z24-30/1.4** **45lpm (1.59cfm)**

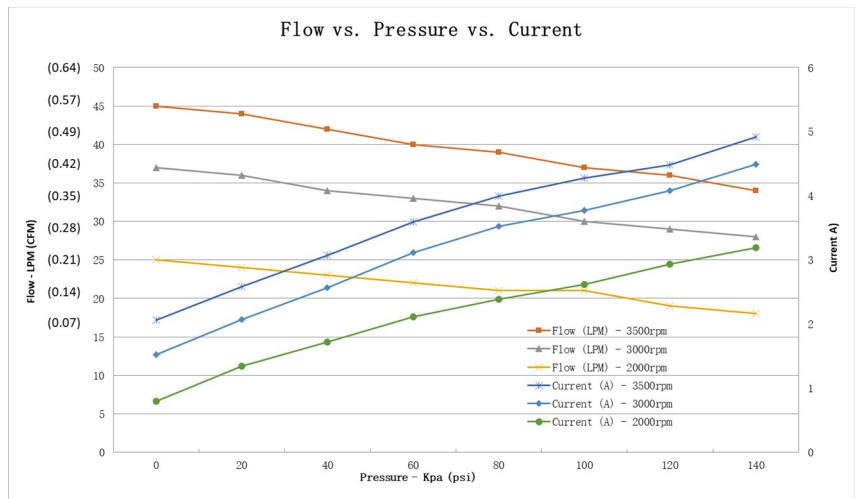
Max. Pressure (INT.) **2.1bar (30.5psi)**

- Permanently lubricated bearings
- Oil-less, non-lubricated cup and cylinder
- Long-life cup design
- Compact but powerful
- BLDC motor with external control board
- Continuous operation
- Designed for portable oxygen concentrator
- With flexibility for all DC portable device

Specifications

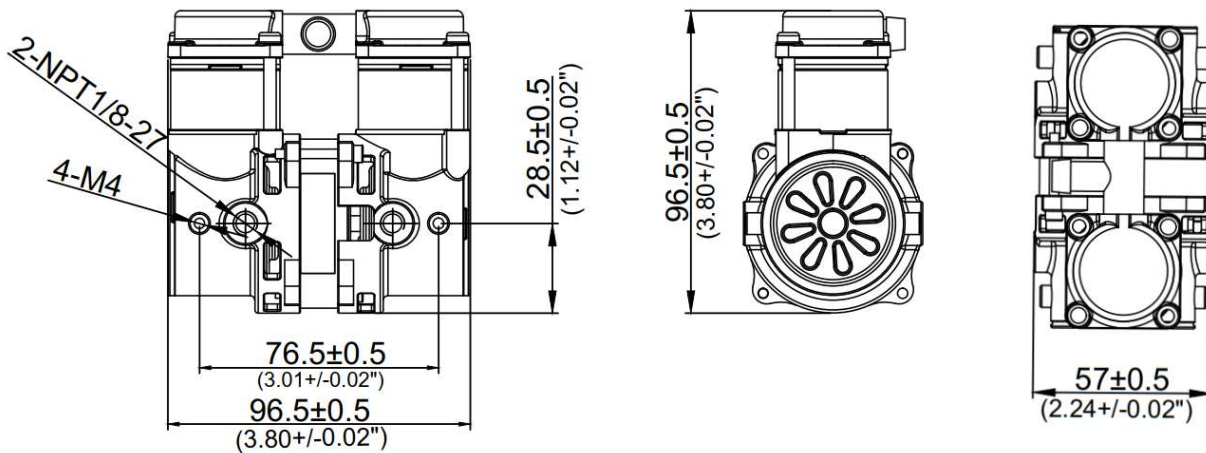
Model	ZW60Z24-30/1.4
Rated Voltage	24VDC
Voltage Range	21-26VDC
Rated Input Power	120W (0.16HP)
Rated Input Current	5A
Air Flow at rated Pressure	30LPM (1.06CFM)
Max. Continuous Pressure	1.4bar (20.3psi)
Max. Intermitt Pressure	2.1bar (30.5psi)
Noise Level	55dBA
Ambient Temperature	5-40°C
Insulation Class	B
Voltage Protect	<20V, >27V
Current Protect	6A
Motor	BLDC
Weight	0.7kg (1.54lbs)

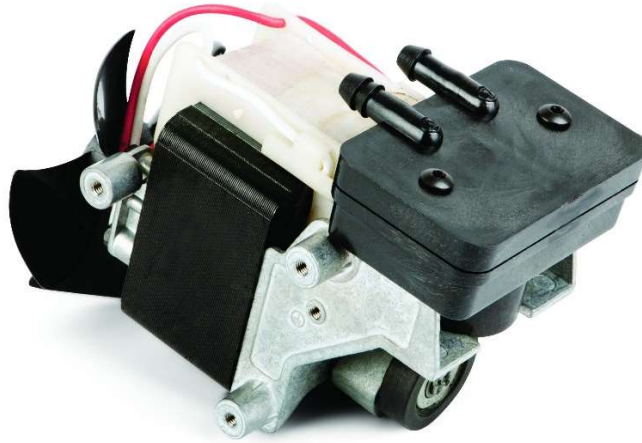
Performance Chart



The information presented in this material is based on technical data and test results of nominal units. Its is believed to be accurate and reliable and is offered as an aid to help in the selection of GSE products. It is the responsibility of the user to determine the suitability of the product for their intended use and the user assumes all risk and liability whatsoever in connection therewith. GSE does not warrant, guarantee or assume any obligation or liability in connection with this information.

Technical Drawings





Single Headed Rocking Piston

ZWS100

Open Flow **10lpm (0.35cfm)**

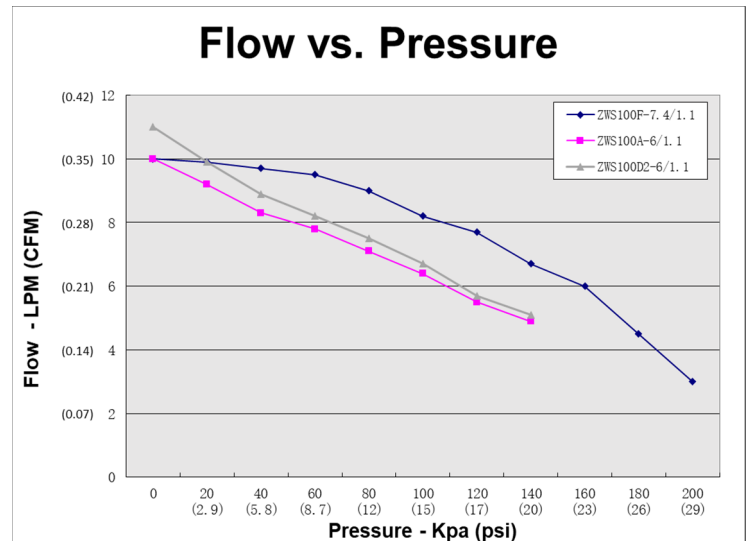
Max. Pressure (INT.) **2bar (29psi)**

- Permanently lubricated bearings
- Oil-less, non-lubricated cup and cylinder
- Highly reliable
- Field service ability
- Thermally protected motor
- Other voltage and configuration available upon request

Specifications

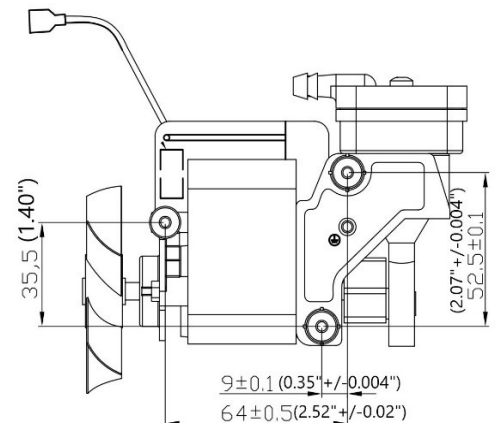
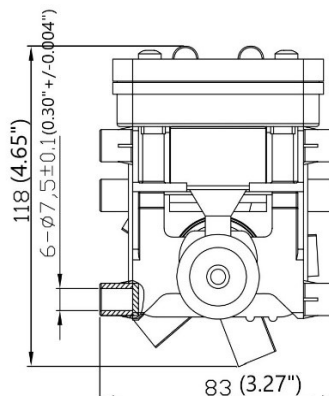
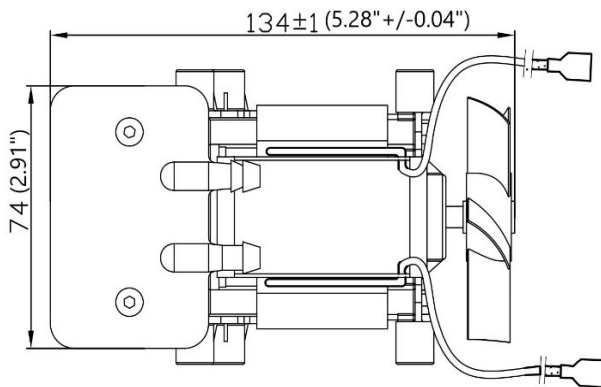
Model	ZWS100A-6/1.1	ZWS100F-7.4/1.1	ZWS100D2-6/1.1
Rated Voltage	220V/50Hz	230V/50Hz	115V/60Hz
Rated Input Power	80W@0.7bar 0.11HP@10psi	80W@1.05bar 0.11HP@15psi	80W@0.7bar 0.11HP@10psi
Input Current	0.8A@0.7bar 0.8A@10psi	0.8A@1.05bar 0.8A@15psi	1.6A@0.7bar 1.6A@10psi
Air Flow at rated Pressure	7LPM (0.25CFM)	7.4LPM (0.26CFM)	7LPM (0.25CFM)
Max. Continuous Pressure	1.1bar (16psi)	1.4bar (20psi)	1.1bar (16psi)
Max. Intermitt Pressure	1.5bar (22psi)	2bar (29psi)	1.5bar (22psi)
Noise Level	64dBA	62dBA	64dBA
Restart Pressure	0Kpa (0psi)	0Kpa (0psi)	0Kpa (0psi)
Ambinet Temperature	10-40°C(50-104°F)	0-40°C(32-104°F)	10-40°C(50-104°F)
Insulation Class	B	F	B
Thermal Protect	130°C (266°F)	150°C (302°F)	130°C (266°F)
Weight	1.4kg (3.1lbs)	1.5kg (3.3lbs)	1.4kg (3.1lbs)

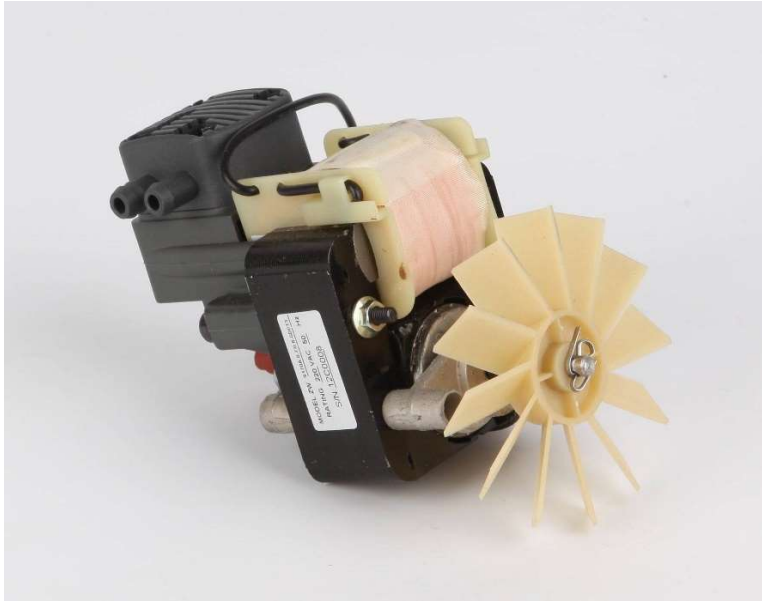
Performance Chart



The information presented in this material is based on technical data and test results of nominal units. Its is believed to be accurate and reliable and is offered as an aid to help in the selection of GSE products. It is the responsibility of the user to determine the suitability of the product for their intended use and the user assumes all risk and liability whatsoever in connection therewith. GSE does not warrant, guarantee or assume any obligation or liability in connection with this information.

Technical Drawings





Single Headed Rocking Piston

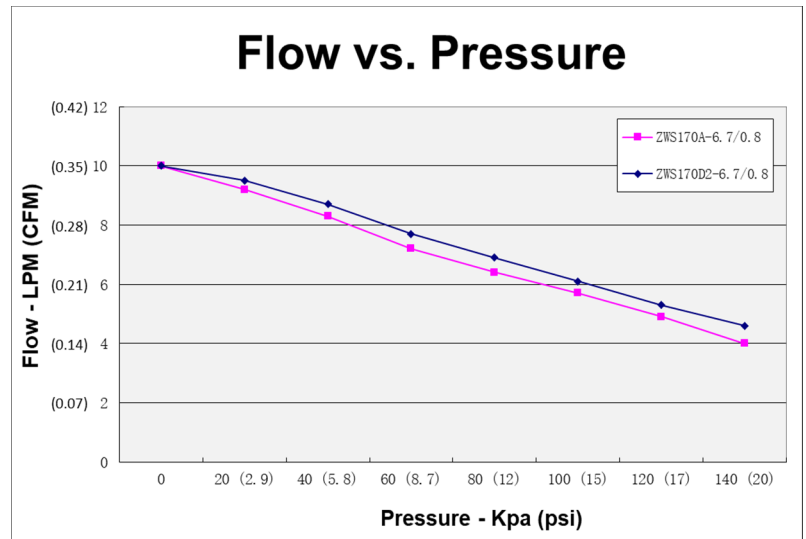
ZWS170
Open Flow **10lpm (0.35cfm)**
Max. Pressure (INT.) **2bar (29psi)**

- Oil-less, non-lubricated cup and cylinder
- Highly reliable
- Field service ability
- Thermally protected motor
- Other voltage and configuration available upon request

Specifications

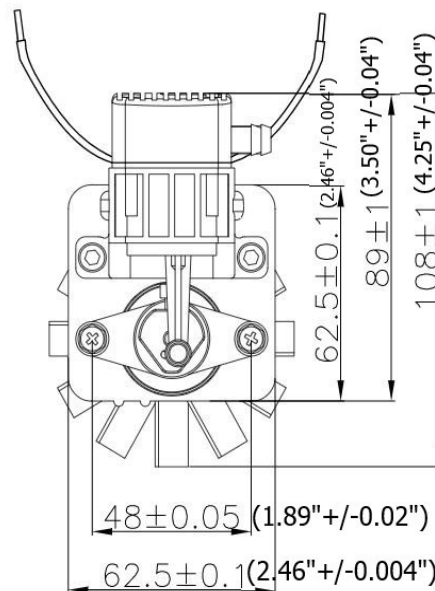
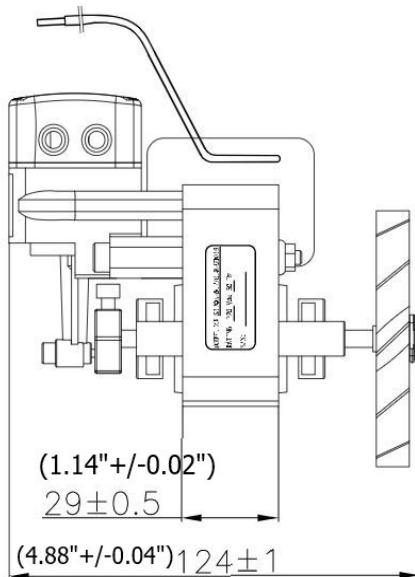
Model	ZWS170A-6.7/0.8	ZWS170D2-6.7/0.8
Rated Voltage	220V/50Hz	115V/60Hz
Rated Input Power	75W@0.8bar (0.1HP@11.6psi)	70W@1.1bar (0.1HP@16psi)
Input Current	0.8A@0.8bar (0.8A@11.6psi)	1.3A@1.1bar (1.3A@16psi)
Air Flow at rated Pressure	7LPM (0.25CFM)	5.5LPM (0.19CFM)
Max. Continuous Pressure	1.5bar (22psi)	1.5bar (22psi)
Max. Intermit Pressure	2bar (29psi)	2bar (29psi)
Noise Level	62dBA	69dBA
Restart Pressure	0Kpa (0psi)	0Kpa (0psi)
Ambinet Temperature	10-40°C(50-104°F)	10-40°C(50-104°F)
Insulation Class	B	B
Thermal Protect	130°C (266°F)	130°C (266°F)
Weight	1.1kg (2.4lbs)	1.1kg (2.4lbs)

Performance Chart



The information presented in this material is based on technical data and test results of nominal units. Its is believed to be accurate and reliable and is offered as an aid to help in the selection of GSE products. It is the responsibility of the user to determine the suitability of the product for their intended use and the user assumes all risk and liability whatsoever in connection therewith. GSE does not warrant, guarantee or assume any obligation or liability in connection with this information.

Technical Drawings





+1 (920) 234 5113 
 +852 2635 2285 
 +52(55)55 74 20 76 
 +44 7716 825015 

email: info@gseint.com
 web: www.gseint.com



Twin Headed Rocking Piston

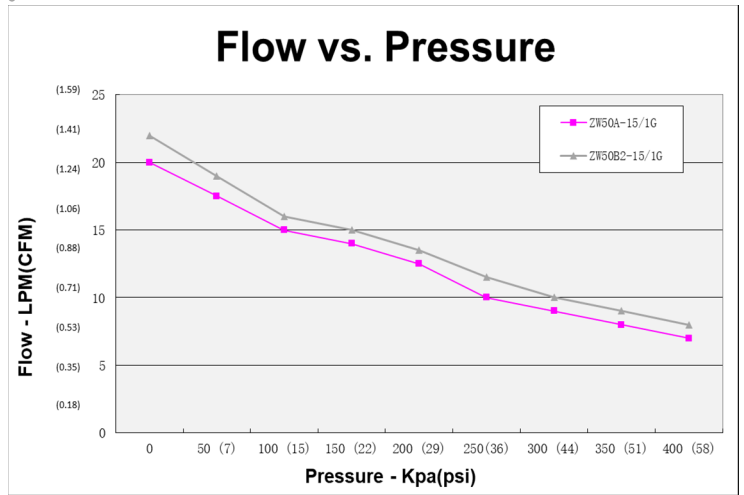
ZW50
Open Flow 22lpm (0.78cfm)
Max. Pressure 4bar (58psi) INT
Max. Vacuum -850mbar (25.1"Hg)

- Permanently lubricated bearings
- Oil-less, non-lubricated cup and cylinder
- Long-life cup design
- Thin wall cylinder for good heat transfer
- Stainless steel valves
- Capacitor as standard
- Field service ability
- Recoverable thermally protected motor
- Other voltage and configuration available upon request

Specifications

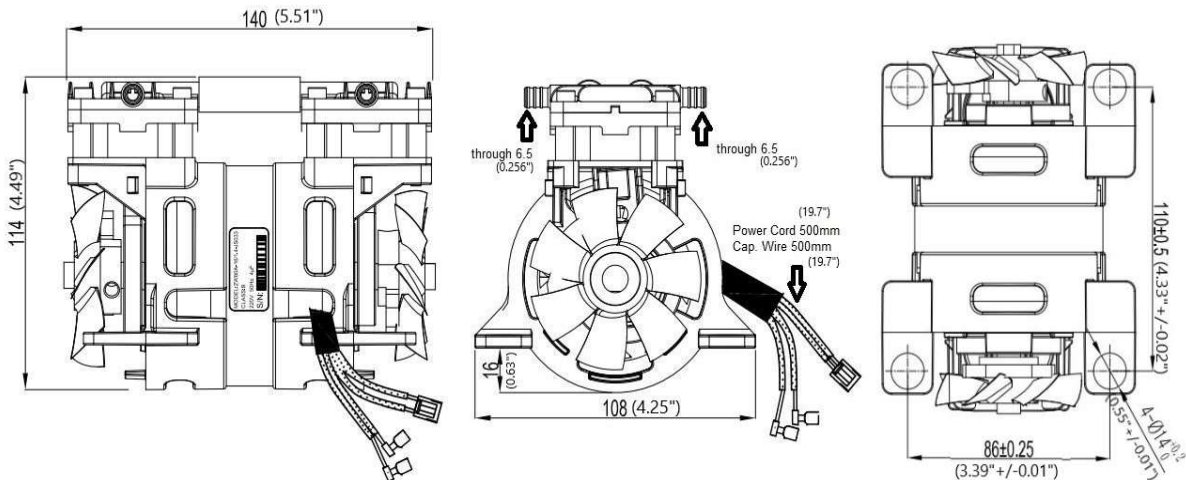
Model	ZW50A-15/1G	ZW50B2-15/1G
Rated Voltage	220V/50Hz	110V/60Hz
Rated Input Power	75W (0.10HP)	90W (0.12HP)
Input Current	0.36A@1bar	0.90A@1bar
Air Flow at rated Pressure	15LPM@1bar 0.53CFM@14.5psi	15LPM@1bar 0.53CFM@14.5psi
Max. Continuous Pressure	3bar (44psi)	3bar (44psi)
Max. Intermit Pressure	4bar (58psi)	4bar (58psi)
Noise Level	50dBA	50dBA
Restart Pressure	0Kpa (0psi)	0Kpa (0psi)
Ambinet Temperature	5-40°C (41-104°F)	5-40°C (41-104°F)
Insulation Class	B	B
Insulation Resistance	> 500M ohm	> 500M ohm
Thermal Protect	135±5°C (275±9°F)	135±5°C (275±9°F)
Capacitor Included	2µF	10µF
Weight	2.1kg (4.6lbs)	2.1kg (4.6lbs)

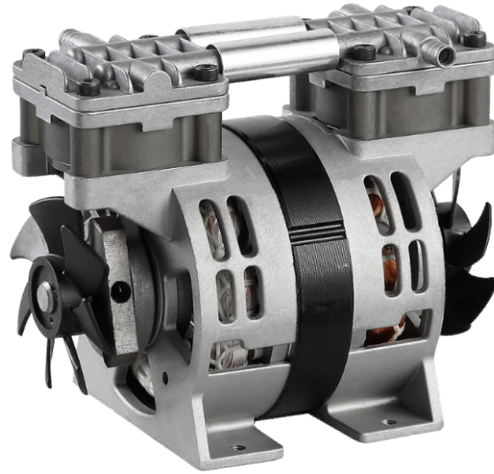
Performance Chart



The information presented in this material is based on technical data and test results of nominal units. Its is believed to be accurate and reliable and is offered as an aid to help in the selection of GSE products. It is the responsibility of the user to determine the suitability of the product for their intended use and the user assumes all risk and liability whatsoever in connection therewith. GSE does not warrant, guarantee or assume any obligation or liability in connection with this information.

Technical Drawings





Twin Headed Rocking Piston

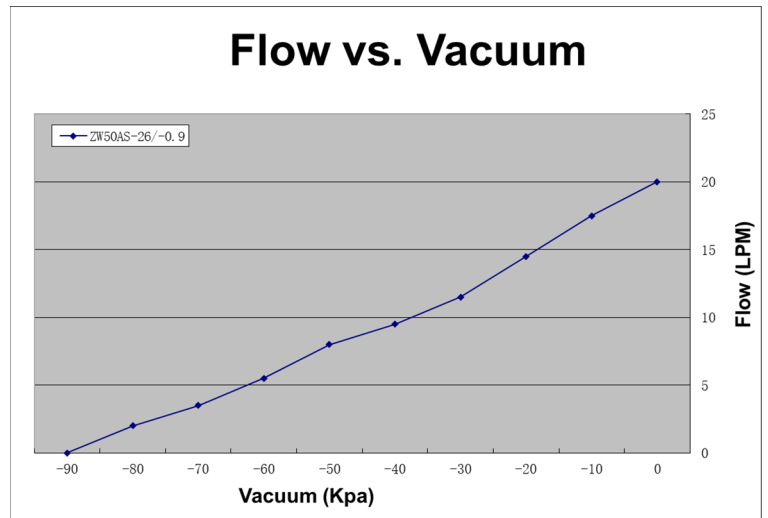
	ZW50S
Open Flow	20lpm (0.71cfm)
Max. Pressure	N/A
Max. Vacuum	-900mbar (26.6"Hg)

- Permanently lubricated bearings
- Oil-less, non-lubricated cup and cylinder
- Long-life cup design
- Thin wall cylinder for good heat transfer
- Stainless steel valves
- Capacitor as standard
- Field service ability
- Recoverable thermally protected motor
- Other voltage and configuration available upon request

Specifications

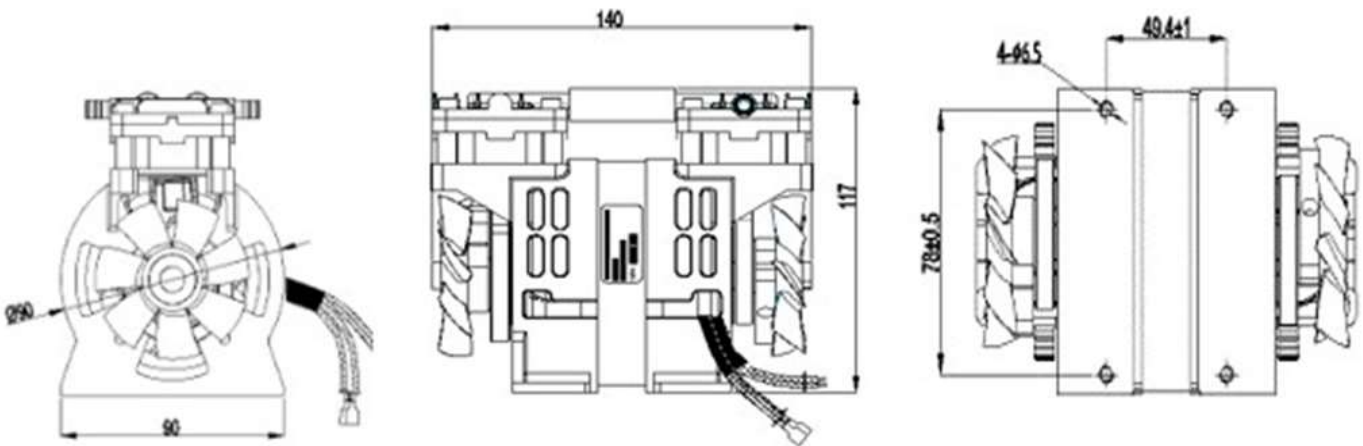
Model	ZW50AS-26/-0.9
Rated Voltage	220V/50Hz
Rated Input Power	60W (0.08HP)
Input Current	0.35A@1bar
Open Flow	20LPM (0.71CFM)
Max. Continuous Vacuum	-90KPa (26.6inHg)
Max. Intermit Pressure	N/A
Noise Level	50dBA
Restart Vacuum	N/A
Ambinet Temperature	5-40°C (41-104°F)
Insulation Class	B
Insulation Resistance	> 500M ohm
Thermal Protect	145±5°C (293±9°F)
Capacitor Included	2µF
Weight	2.1kg (4.6lbs)

Performance Chart



The information presented in this material is based on technical data and test results of nominal units. Its is believed to be accurate and reliable and is offered as an aid to help in the selection of GSE products. It is the responsibility of the user to determine the suitability of the product for their intended use and the user assumes all risk and liability whatsoever in connection therewith. GSE does not warrant, guarantee or assume any obligation or liability in connection with this information.

Technical Drawings





Twin Headed Rocking Piston

ZW80

Open Flow **26lpm (0.92cfm)**

Max. Pressure (INT.) **2.5bar (36psi)**

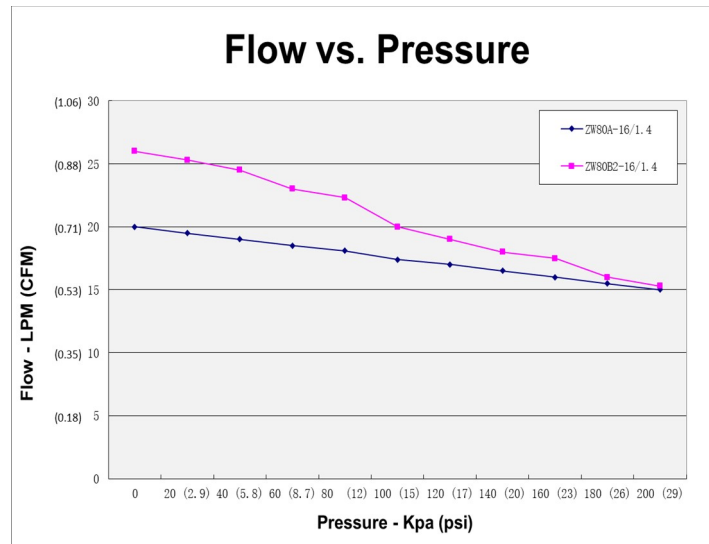
Max. Vacuum **-900mbar (26.6"Hg)**

- Permanently lubricated bearings
- Oil-less, non-lubricated cup and cylinder
- Long-life cup design
- Thin wall cylinder for good heat transfer
- Stainless steel valves
- Capacitor as standard
- Field service ability
- Recoverable thermally protected motor
- Other voltage and configuration available upon request

Specifications

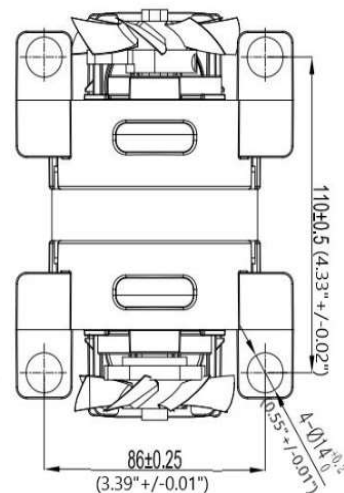
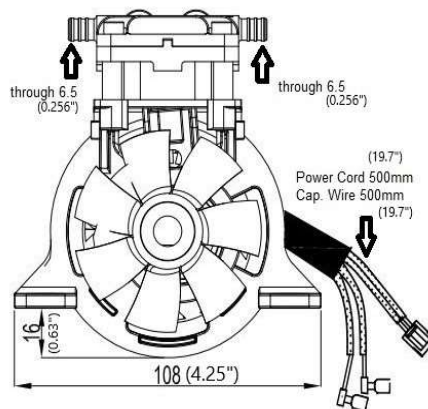
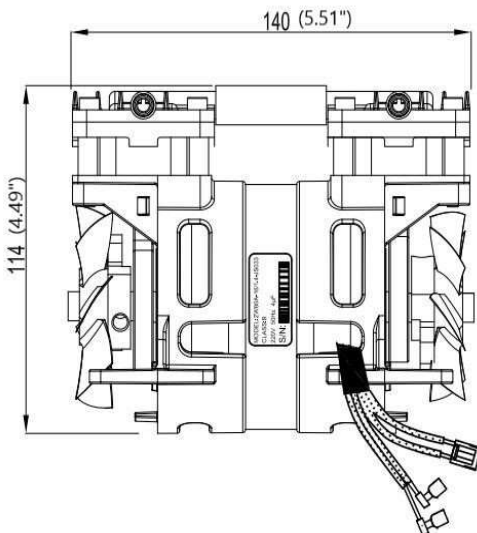
Model	ZW80A-16/1.4	ZW80B2-16/1.4
Rated Voltage	220V/50Hz	110V/60Hz
Rated Input Power	105W (0.14HP)	130W (0.17HP)
Input Current	0.53A	1.19A
Air Flow at rated Pressure	16LPM (0.57CFM)	17LPM (0.60CFM)
Max. Continuous Pressure	2bar (29psi)	2bar (29psi)
Max. Intermit Pressure	2bar (29psi)	2.5bar (36psi)
Noise Level	50dBA	50dBA
Restart Pressure	0Kpa (0psi)	0Kpa (0psi)
Ambinet Temperature	5-40°C (41-104°F)	5-40°C (41-104°F)
Insulation Class	B	B
Insulation Resistance	> 500M ohm	> 500M ohm
Thermal Protect	135±5°C (275±9°F)	135±5°C (275±9°F)
Capacitor Included	4µF	8µF
Weight	2.5kg (5.5lbs)	2.5kg (5.5lbs)

Performance Chart



The information presented in this material is based on technical data and test results of nominal units. Its is believed to be accurate and reliable and is offered as an aid to help in the selection of GSE products. It is the responsibility of the user to determine the suitability of the product for their intended use and the user assumes all risk and liability whatsoever in connection therewith. GSE does not warrant, guarantee or assume any obligation or liability in connection with this information.

Technical Drawings





+1 (920) 234 5113

+852 2635 2285

+52(55)55 74 20 76

+44 7716 825015

email: info@gseint.com

web: www.gseint.com



Twin Headed Vacuum Pump

ZW90V

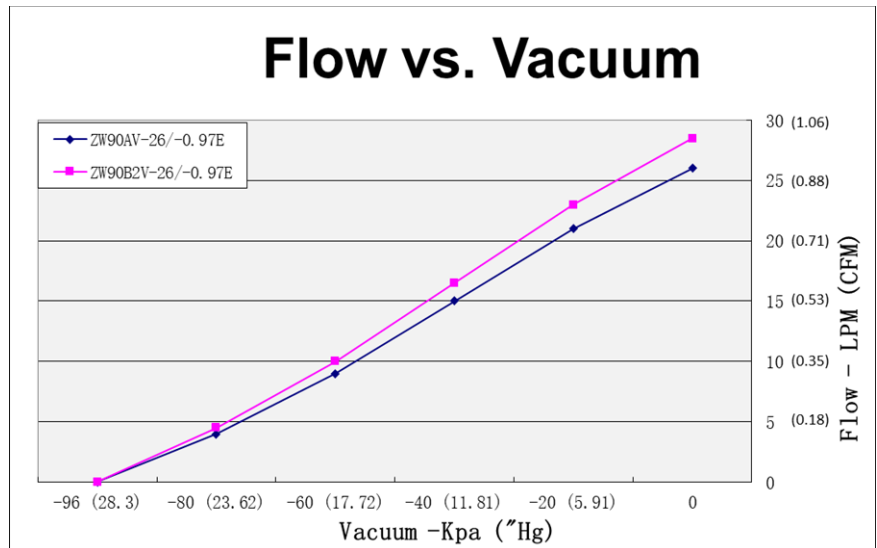
Open Flow **28.5lpm (1cfm)**
 Max. Vacuum **-960mbar (28.3"Hg)**

- Long-life invert piston cup special design for vacuum application ●
- Permanently lubricated bearings ●
- Oil-less, non-lubricated cup and cylinder ●
- Long-life cup design ●
- Thin wall cylinder for good heat transfer ●
- Stainless steel valves ●
- Capacitor as standard ●
- Field service ability ●
- Recoverable thermally protected motor ●
- Other voltage and configuration available upon request ●

Specifications

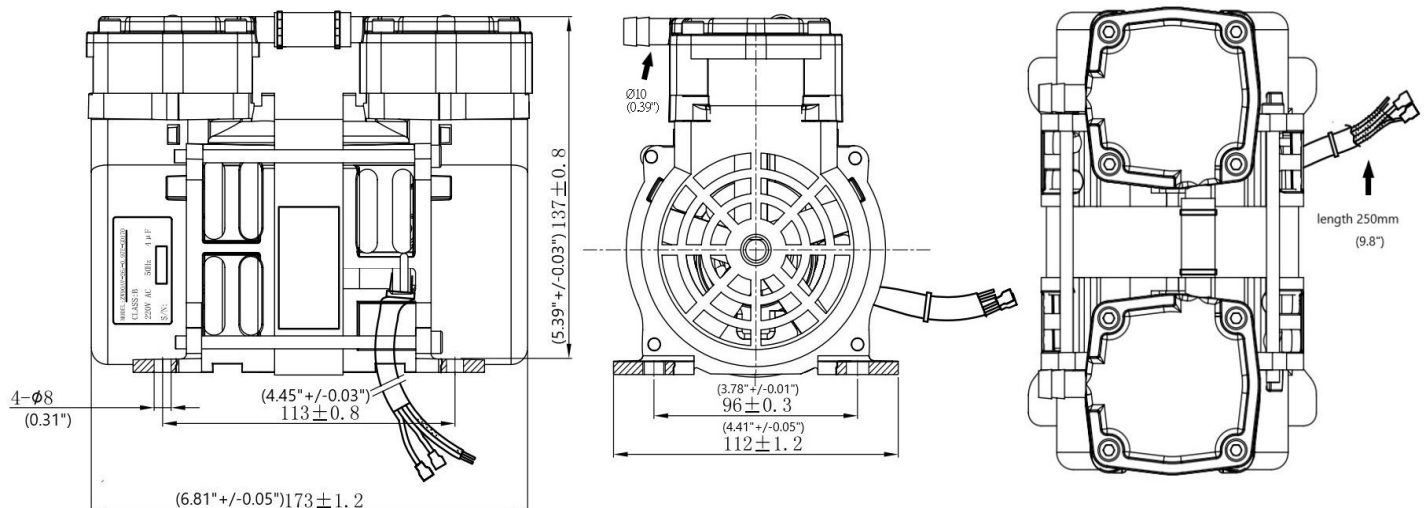
Model	ZW90AV-26/-0.97E	ZW90B2V-26/-0.97E
Rated Voltage	220V/50Hz	110V/60Hz
Input Power (Open Flow)	110W (0.15HP)	125W (0.17HP)
Input Current (Open Flow)	0.65A	1.15A
Open Flow	26LPM (0.92CFM)	28.5LPM (1.00CFM)
Max. Continuous Vacuum	-96Kpa (28.3"Hg)	-96Kpa (28.3"Hg)
Max. Intermit Pressure	N/A	N/A
Noise Level	53dBA	55dBA
Restart Vacuum	0Kpa (0psi)	0Kpa (0psi)
Ambinet Temperature	5-40°C (41-104°F)	5-40°C (41-104°F)
Insulation Class	B	B
Insulation Resistance	> 500M ohm	> 500M ohm
Thermal Protect	135±5°C (275±9°F)	135±5°C (275±9°F)
Capacitor Included	4µF	12.5µF
Weight	3.6kg (7.9lbs)	3.6kg (7.9lbs)

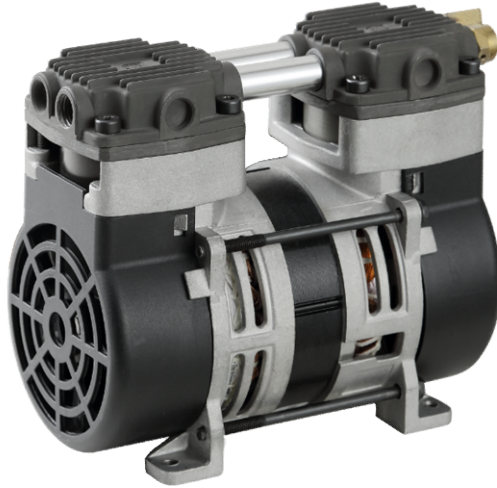
Performance Chart



The information presented in this material is based on technical data and test results of nominal units. Its is believed to be accurate and reliable and is offered as an aid to help in the selection of GSE products. It is the responsibility of the user to determine the suitability of the product for their intended use and the user assumes all risk and liability whatsoever in connection therewith. GSE does not warrant, guarantee or assume any obligation or liability in connection with this information.

Technical Drawings





Twin Headed Rocking Piston

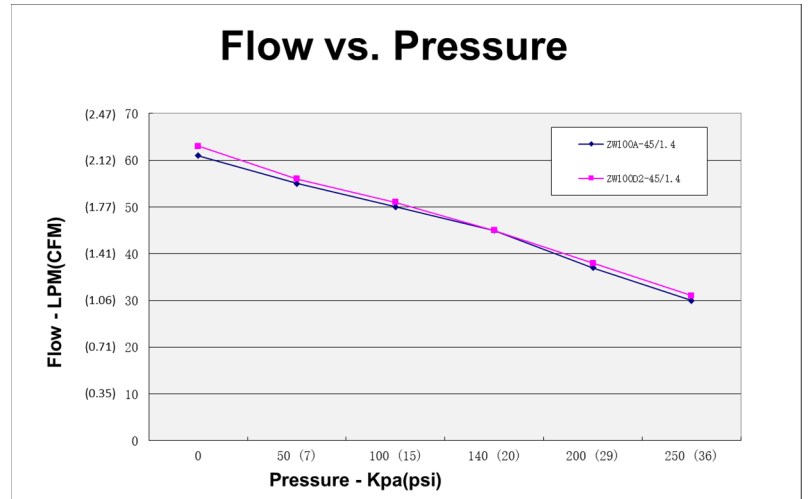
ZW100(A) Series
Open Flow 63lpm (2.22cfm)
Max. Pressure 2.5bar (36.3psi)
Max. Vacuum -860mbar (25.4"Hg)

- Permanently lubricated bearings
- Oil-less, non-lubricated cup and cylinder
- Long-life cup design
- Thin wall cylinder for good heat transfer
- Stainless steel valves
- Capacitor as standard
- Field service ability
- Recoverable thermally protected motor
- Other voltage and configuration available upon request

Specifications

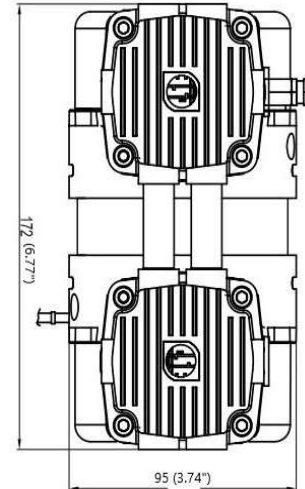
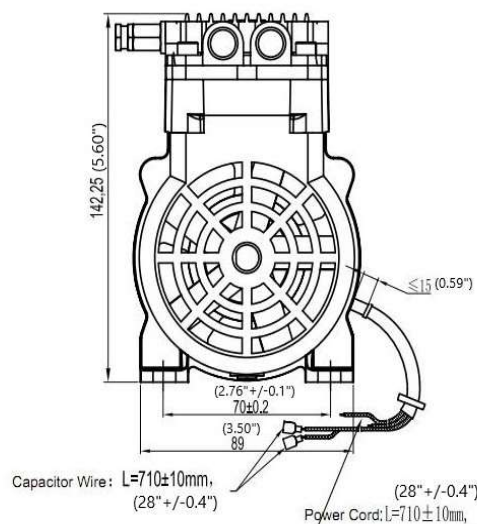
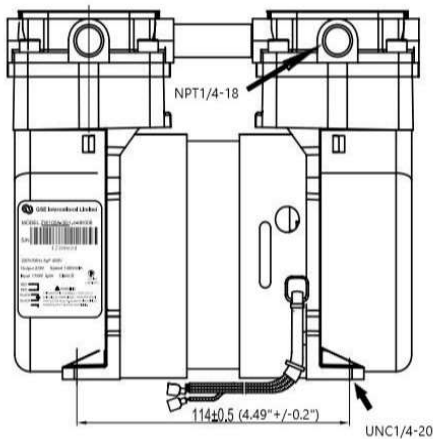
Model	ZW100A-45/1.4	ZW100D2-45/1.4
Rated Voltage	220V/50Hz	115V/60Hz
Rated Input Power	250W (034HP)	250W (034HP)
Input Current	1.25A	2.3A
Air Flow at rated Pressure	45LPM@1.4bar (1.59CFM@20psi)	45LPM@1.4bar (1.59CFM@20psi)
Max. Continuous Pressure	1.4bar (20psi)	1.4bar (20psi)
Max. Intermit Pressure	2.5bar (36psi)	2.5bar (36psi)
Noise Level	55dBA	56dBA
Restart Pressure	0kpa (0psi)	0kpa (0psi)
Ambinet Temperature	5-40°C (41-104°F)	5-40°C (41-104°F)
Insulation Class	B	B
Insulation Resistance	> 500M ohm	> 500M ohm
Thermal Protect	135±5°C (275±9°F)	135±5°C (275±9°F)
Capacitor Included	6µF	15µF
Weight	3.7kg (8.2lbs)	3.7kg (8.2lbs)

Performance Chart



The information presented in this material is based on technical data and test results of nominal units. It is believed to be accurate and reliable and is offered as an aid to help in the selection of GSE products. It is the responsibility of the user to determine the suitability of the product for their intended use and the user assumes all risk and liability whatsoever in connection therewith. GSE does not warrant, guarantee or assume any obligation or liability in connection with this information.

Technical Drawings





+1 (920) 234 5113

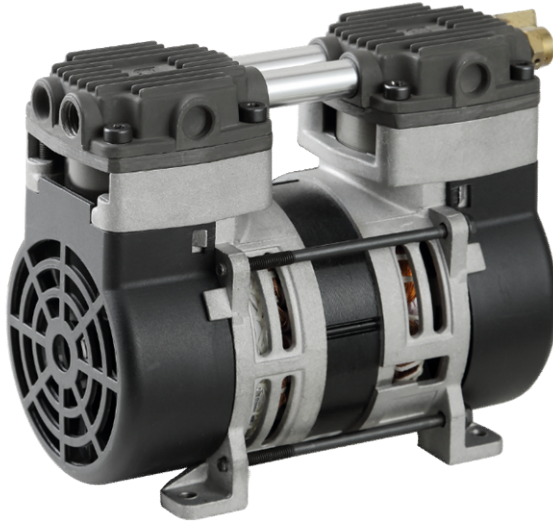
+852 2635 2285

+52 (55) 55 74 20 76

+44 7716 825015

email: info@gseint.com

web: www.gseint.com



Twin Headed Rocking Piston

ZW100(B) Series

Open Flow **47lpm (1.66cfm)**

Max. Pressure **1.7bar (25psi)**

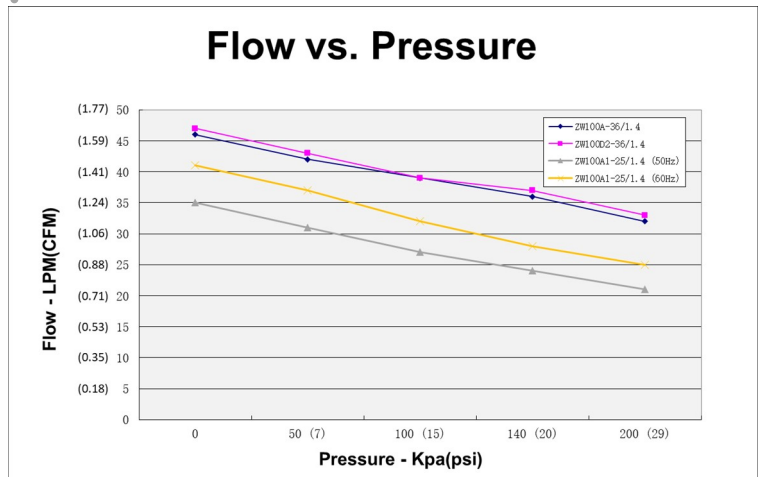
Max. Vacuum **-880mbar (26"Hg)**

- Permanently lubricated bearings
- Oil-less, non-lubricated cup and cylinder
- Long-life cup design
- Thin wall cylinder for good heat transfer
- Stainless steel valves
- Capacitor as standard
- Field service ability
- Recoverable thermally protected motor
- Other voltage and configuration available upon request

Specifications

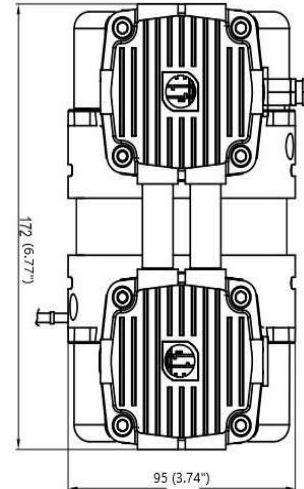
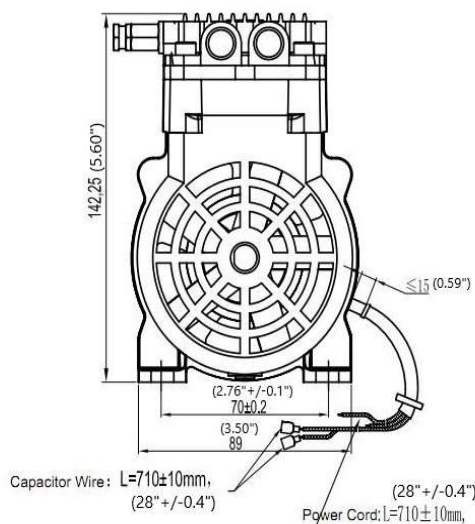
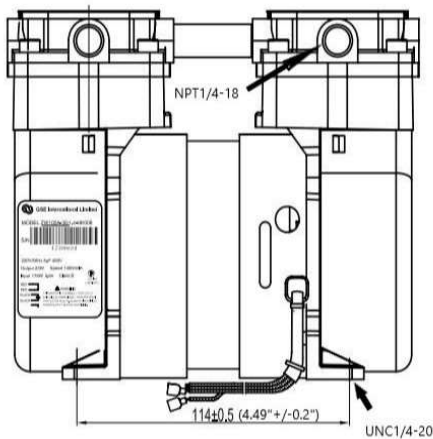
Model	ZW100A-36/1.4	ZW100D2-36/1.4	ZW100A1-25/1.4	
Rated Voltage	220V/50Hz	115V/60Hz	220V/50Hz	220V/60Hz
Rated Input Power	180W (0.24HP)	180W (0.24HP)	140W (0.19HP)	160W (0.21HP)
Input Current	0.9A	1.65A	0.9A	
Air Flow at rated Pressure	36LPM@1.4bar (1.27CFM@20psi)	36LPM@1.4bar (1.27CFM@20psi)	24LPM@1.4bar (0.85CFM@20psi)	28LPM@1.4bar (0.99CFM@20psi)
Max. Continuous Pressure	1.4bar (20psi)	1.4bar (20psi)	1.4bar (20psi)	
Max. Intermit Pressure	1.7bar (25psi)	1.7bar (25psi)	1.7bar (25psi)	
Noise Level	53dBA	55dBA	55dBA	
Restart Pressure	0Kpa (0psi)	0Kpa (0psi)	0Kpa (0psi)	
Ambinet Temperature	5-40°C (41-104°F)	5-40°C (41-104°F)	5-40°C (41-104°F)	
Insulation Class	B	B	B	
Insulation Resistance	> 500M ohm	> 500M ohm	> 500M ohm	
Thermal Protect	135±5°C (275±9°F)	135±5°C (275±9°F)	135±5°C (275±9°F)	
Capacitor Included	5µF	10µF	5µF	
Weight	3.2kg (7.1lbs)	3.2kg (7.1lbs)	3.2kg (7.1lbs)	

Performance Chart



The information presented in this material is based on technical data and test results of nominal units. It is believed to be accurate and reliable and is offered as an aid to help in the selection of GSE products. It is the responsibility of the user to determine the suitability of the product for their intended use and the user assumes all risk and liability whatsoever in connection therewith. GSE does not warrant, guarantee or assume any obligation or liability in connection with this information.

Technical Drawings





+1 (920) 234 5113 
 +852 2635 2285 
 +52 (55) 55 74 20 76 
 +44 7716 825015 
 email: info@gseint.com
 web: www.gseint.com



Twin Headed Rocking Piston

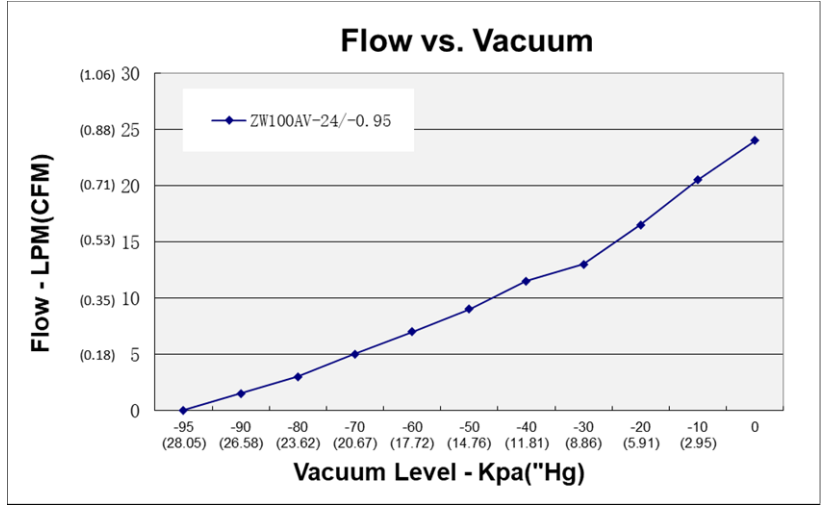
Open Flow **ZW100VS Series**
24lpm (0.85cfm)
Max. Vacuum **-950mbar (28"Hg)**

- Permanently lubricated bearings
- Oil-less, non-lubricated cup and cylinder
- Long-life cup design
- Thin wall cylinder for good heat transfer
- Stainless steel valves
- Capacitor as standard
- Field service ability
- Recoverable thermally protected motor
- Other voltage and configuration available upon request

Specifications

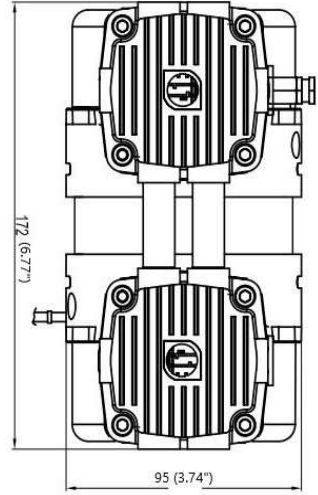
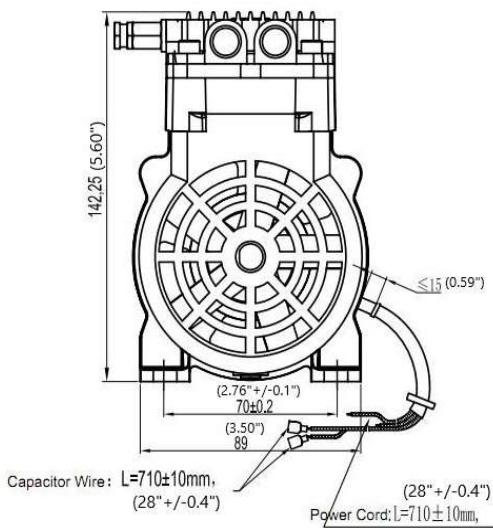
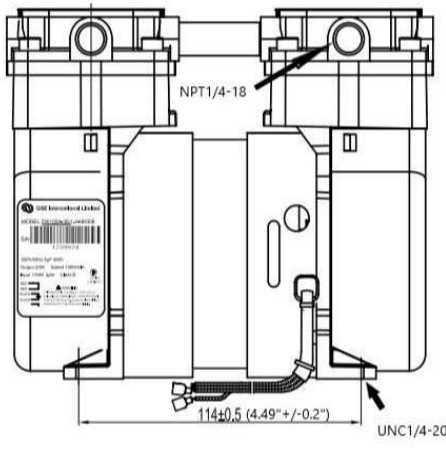
Model	ZW100AV-24/-0.95
Rated Voltage	220V/50Hz
Input Power (Open)	190W (0.25HP)
Input Current (Open)	1A
Open Flow	24LPM (0.85CFM)
Max. Continuous Vacuum	-95Kpa (28"Hg)
Max. Intermit Pressure	N/A
Noise Level	55dBA
Restart Vacuum	0Kpa (0"Hg)
Ambinet Temperature	10-40°C (50-104°F)
Insulation Class	B
Insulation Resistance	> 500M ohm
Thermal Protect	135±5°C (275±9°F)
Capacitor Included	5µF
Weight	3.2kg (7.1lbs)

Performance Chart



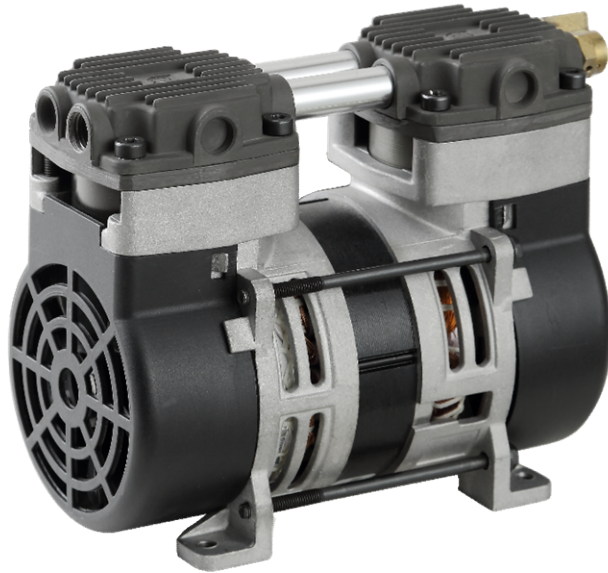
The information presented in this material is based on technical data and test results of nominal units. It is believed to be accurate and reliable and is offered as an aid to help in the selection of GSE products. It is the responsibility of the user to determine the suitability of the product for their intended use and the user assumes all risk and liability whatsoever in connection therewith. GSE does not warrant, guarantee or assume any obligation or liability in connection with this information.

Technical Drawings





+1 (920) 234 5113 
 +852 2635 2285 
 +52 (55) 55 74 20 76 
 +44 7716 825015 
 email: info@gseint.com
 web: www.gseint.com



Twin Headed Rocking Piston

ZW100Z Series

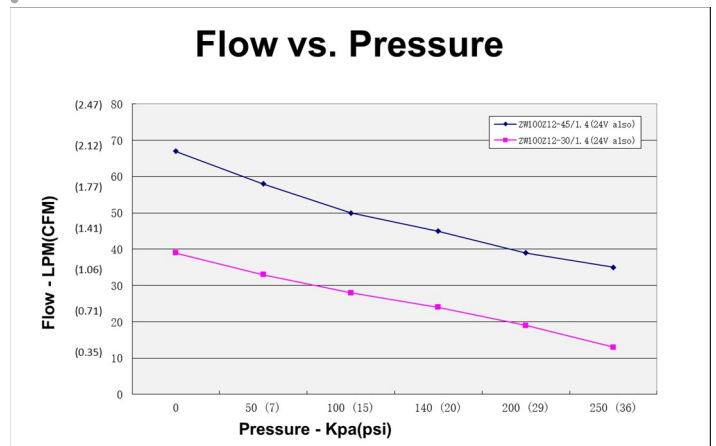
Open Flow **67lpm (2.22cfm)**
 Max. Pressure **2.5bar (36psi)**
 Max. Vacuum **-900mbar (26.6"Hg)**

- Permanently lubricated bearings
- Oil-less, non-lubricated cup and cylinder
- Long-life cup design
- Compact but powerful
- BLDC motor with external control board
- Continuous operation
- Designed for portable oxygen concentrator
- With flexibility for all DC portable device

Specifications

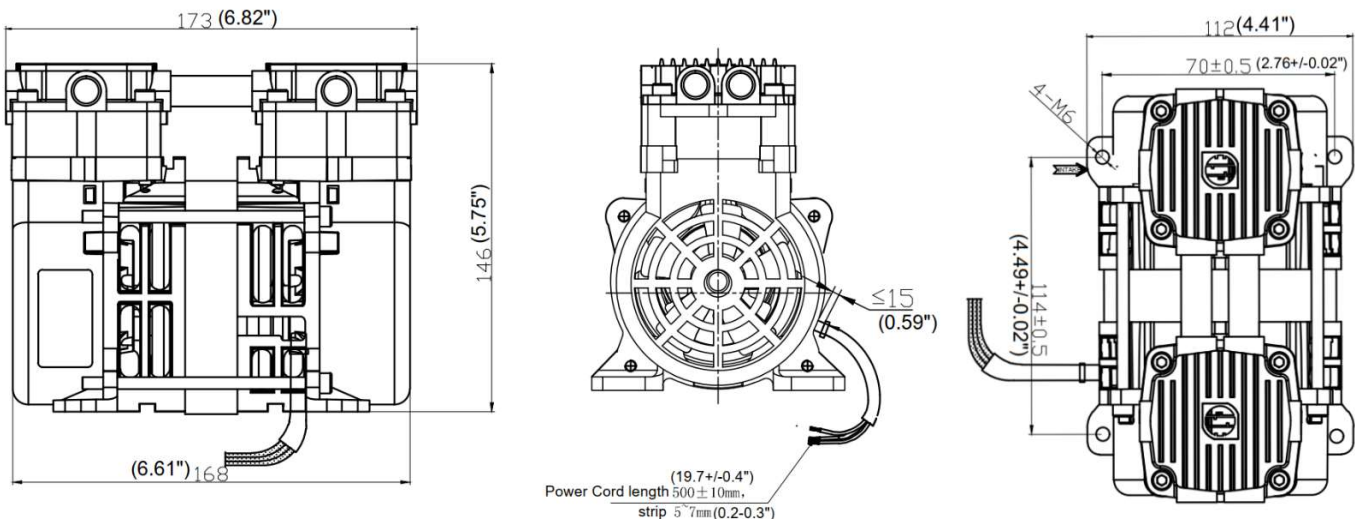
Model	ZW100Z12-45/1.4	ZW100Z24-45/1.4	ZW100Z12-30/1.4	ZW100Z24-30/1.4
Rated Voltage	12VDC	24VDC	12VDC	24VDC
Rated Input Power	230W (0.31HP)	220W (0.30HP)	110W (0.15HP)	120W (0.16HP)
Input Current	19A	9A	9A	4.8A
Air Flow at rated Pressure	45LPM@1.4bar (1.59CFM@20psi)	45LPM@1.4bar (1.59CFM@20psi)	24LPM@1.4bar (0.85LPM@20psi)	24LPM@1.4bar (0.85LPM@20psi)
Max. Continuous Pressure	1.4bar (20psi)	1.4bar (20psi)	2bar (29psi)	2bar (29psi)
Max. Intermit Pressure	2.1bar (30psi)	2.1bar (30psi)	2.5bar (36psi)	2.5bar (36psi)
Noise Level	57dBA	57dBA	65dBA	65dBA
Restart Pressure	0Kpa (0psi)	0Kpa (0psi)	0Kpa (0psi)	0Kpa (0psi)
Ambinet Temperature	5-40°C (41-104°F)	5-40°C (41-104°F)	5-40°C (41-104°F)	5-40°C (41-104°F)
Insulation Class	B	B	B	B
Insulation Resistance	> 500M ohm	> 500M ohm	> 500M ohm	> 500M ohm
Current Protect	26A	14A	18A	9A
Voltage Protect	13VDC	27VDC	13VDC	17VDC
Weight	3.8kg (8.4lbs)	3.8kg (8.4lbs)	3.2kg (7.1lbs)	3.2kg (7.1lbs)

Performance Chart



The information presented in this material is based on technical data and test results of nominal units. It is believed to be accurate and reliable and is offered as an aid to help in the selection of GSE products. It is the responsibility of the user to determine the suitability of the product for their intended use and the user assumes all risk and liability whatsoever in connection therewith. GSE does not warrant, guarantee or assume any obligation or liability in connection with this information.

Technical Drawings





Twin Headed Rocking Piston

ZW190

Open Flow **57lpm (2.01cfm)**

Max. Pressure (INT.) **2.1bar (30psi)**

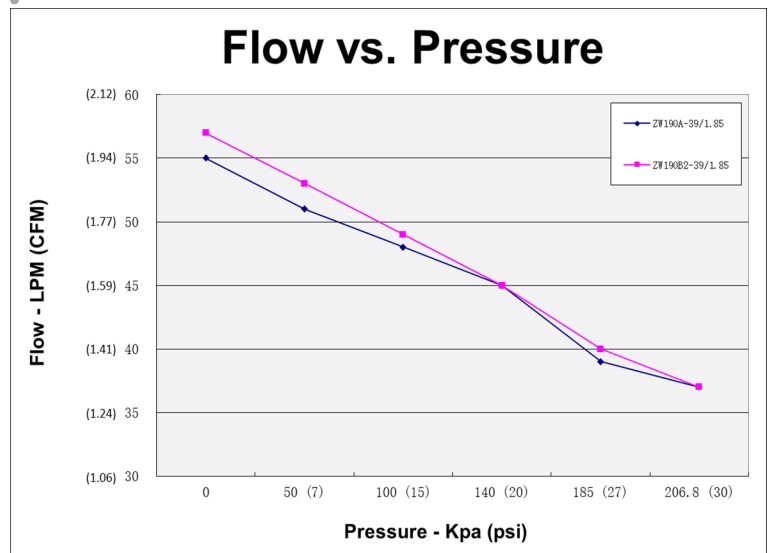
Max. Vacuum **-799mbar (23.6"Hg)**

- Permanently lubricated bearings
- Oil-less, non-lubricated cup and cylinder
- Long-life cup design
- Thin wall cylinder for good heat transfer
- Stainless steel valves
- Capacitor as standard
- Field service ability
- Recoverable thermally protected motor
- Other voltage and configuration available upon request

Specifications

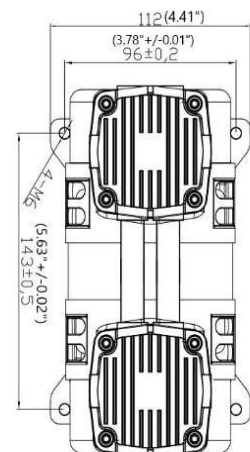
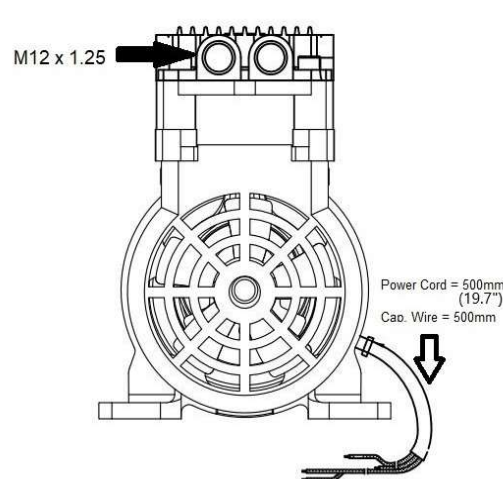
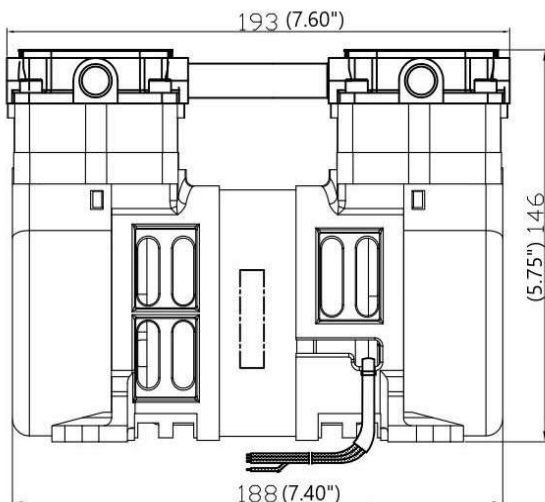
Model	ZW190A-39/1.85	ZW190B2-39/1.85
Rated Voltage	220V/50Hz	110V/60Hz
Rated Input Power	240W@1.4bar (0.32HP@20psi)	240W@1.4bar (0.32HP@20psi)
Input Current	1.2A@1.4bar (20psi)	2.4A@1.4bar (20psi)
Air Flow at rated Pressure	45LPM (1.59CFM)	45LPM (1.59CFM)
Max. Continuous Pressure	1.85bar (27psi)	1.85bar (27psi)
Max. Intermit Pressure	2.1bar (30psi)	2.1bar (30psi)
Noise Level	57dBA	59dBA
Restart Pressure	0Kpa (0psi)	0Kpa (0psi)
Ambinet Temperature	10-40°C(50-104°F)	10-40°C(50-104°F)
Insulation Class	B	B
Insulation Resistance	> 500M ohm	> 500M ohm
Thermal Protect	135±5°C (275±9°F)	135±5°C (275±9°F)
Capacitor Included	6µF	20µF
Weight	3.8kg (8.4lbs)	3.8kg (8.4lbs)

Performance Chart



The information presented in this material is based on technical data and test results of nominal units. Its is believed to be accurate and reliable and is offered as an aid to help in the selection of GSE products. It is the responsibility of the user to determine the suitability of the product for their intended use and the user assumes all risk and liability whatsoever in connection therewith. GSE does not warrant, guarantee or assume any obligation or liability in connection with this information.

Technical Drawings





Single Headed Rocking Piston

ZWS250

Open Flow **47.5lpm (1.7cfm)**

Max. Pressure (INT.) **5bar (72.5psi)**

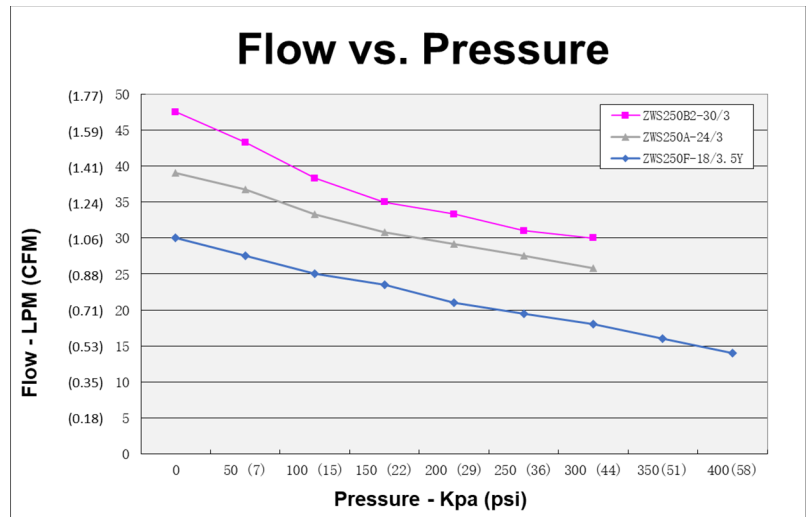
Max. Vacuum **-880mbar (26"Hg)**

- Permanently lubricated bearings
- Oil-less, non-lubricated cup and cylinder
- Long-life cup design
- Thin wall cylinder for good heat transfer
- Stainless steel valves
- Capacitor as standard
- Field service ability
- Recoverable thermally protected motor

Specifications

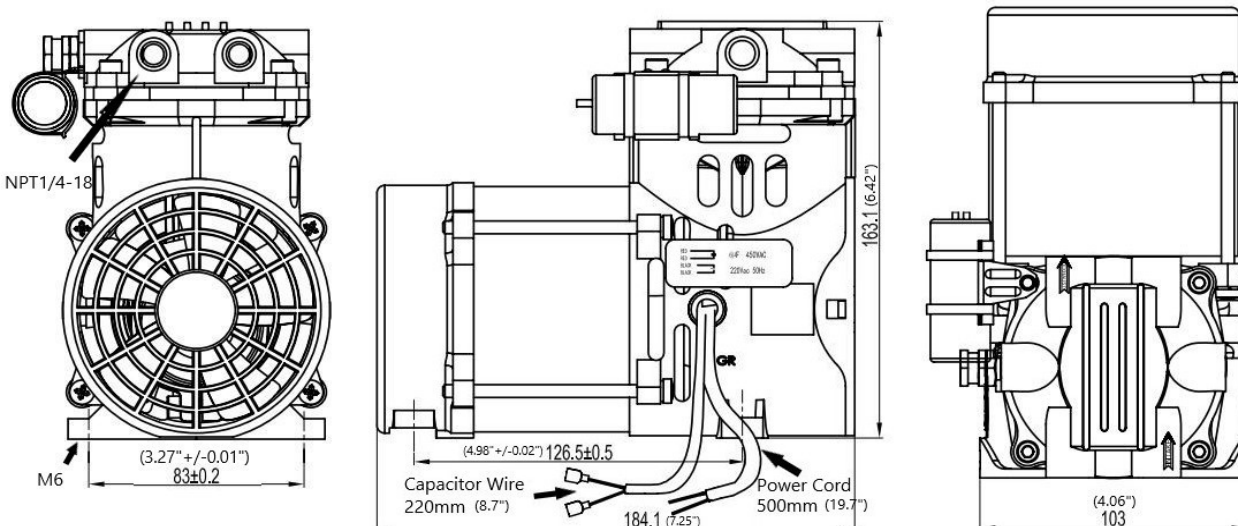
Model	ZWS250A-24/3	ZWS250B2-30/3	ZWS250F-18/3.5Y
Rated Voltage	220V/50Hz	110V/60Hz	230V/50Hz
Rated Input Power	350W (0.47HP)	270W (0.36HP)	350W (0.47HP)
Input Current	2A	2.7A	2.1A
Air Flow at rated Pressure	26LPM@3bar 0.92CFM@44psi	30LPM@3bar 1.06CFM@44psi	18LPM@3.5bar 0.64CFM@51psi
Max. Continuous Pressure	3bar (44psi)	3bar (44psi)	3.5bar (51psi)
Max. Intermit Pressure	5bar (73psi)	4bar (58psi)	4.2bar (61psi)
Noise Level	59dBA	60dBA	65dBA
Restart Pressure	0Kpa (0psi)	0Kpa (0psi)	350Kpa (51psi)
Ambient Temperature	5-40°C (41-104°F)	5-40°C (41-104°F)	5-40°C (41-104°F)
Insulation Class	B	B	B
Insulation Resistance	> 500M ohm	> 500M ohm	> 500M ohm
Thermal Protect	135±5°C (275±9°F)	135±5°C (275±9°F)	135±5°C (275±9°F)
Capacitor Included	6µF	25µF	8µF
Weight	5.3kg (11.7lbs)	5.3kg (11.7lbs)	5.5kg (12.1lbs)

Performance Chart



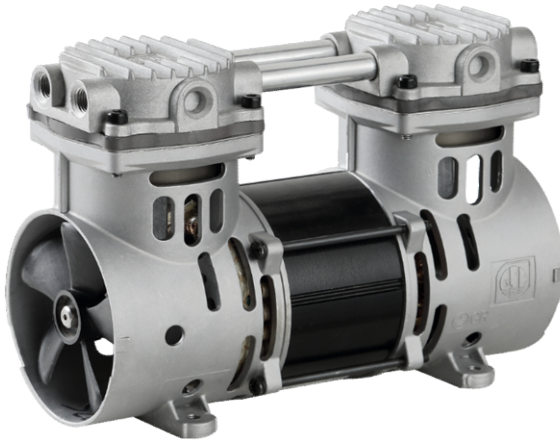
The information presented in this material is based on technical data and test results of nominal units. It is believed to be accurate and reliable and is offered as an aid to help in the selection of GSE products. It is the responsibility of the user to determine the suitability of the product for their intended use and the user assumes all risk and liability whatsoever in connection therewith. GSE does not warrant, guarantee or assume any obligation or liability in connection with this information.

Technical Drawings





+1 (920) 234 5113 
 +852 2635 2285 
 +52 (55) 55 74 20 76 
 +44 7716 825015 
 email: info@gseint.com
 web: www.gseint.com



Twin Headed Rocking Piston

ZW280

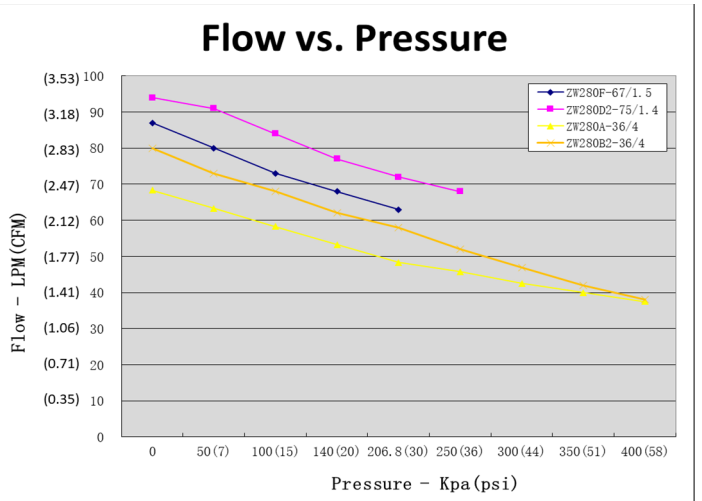
Open Flow **94lpm (3.32cfm)**
 Max. Pressure **5bar (73psi)**
 Max. Vacuum **-900mbar (26.6"Hg)**

- Permanently lubricated bearings
- Oil-less, non-lubricated cup and cylinder
- Long-life cup design
- Thin wall cylinder for good heat transfer
- Stainless steel valves
- Capacitor as standard
- Field service ability
- Recoverable thermally protected motor
- Other voltage and configuration available upon request

Specifications

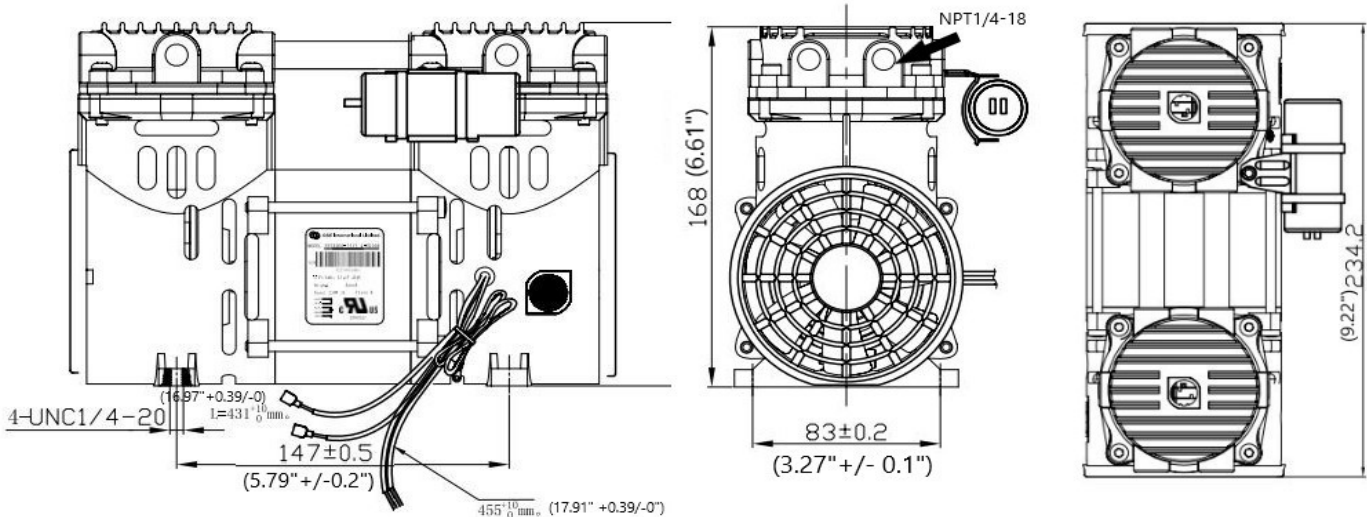
Model	ZW280F-75/1.4	ZW280D2-75/1.4	ZW280A-36/4	ZW280B2-36/4
Rated Voltage	230V/50Hz	115V/60Hz	220V/50Hz	110V/60Hz
Rated Input Power	330W (0.44HP)	330W (0.44HP)	385W (0.52HP)	350W (0.47HP)
Input Current	1.5A	3A	1.85A	3.4A
Air Flow at rated Pressure	76LPM@1.4bar 2.68CFM@20psi	77LPM@1.4bar 2.72CFM@20psi	36LPM@4bar 1.27CFM@58psi	38LPM@4bar 1.34CFM@58psi
Max. Continuous Pressure	1.4bar (20psi)	1.4bar (20psi)	4bar (58psi)	4bar (58psi)
Max. Intermit Pressure	2.45bar (36psi)	2.45bar (36psi)	5bar (73psi)	5bar (73psi)
Noise Level	60dBA	60dBA	64dBA	65dBA
Restart Pressure	0Kpa (0psi)	0Kpa (0psi)	0Kpa (0psi)	0Kpa (0psi)
Ambient Temperature	5-40°C (41-104°F)	5-40°C (41-104°F)	5-40°C (41-104°F)	5-40°C (41-104°F)
Insulation Class	B	B	B	B
Insulation Resistance	> 500M ohm	> 500M ohm	> 500M ohm	> 500M ohm
Thermal Protect	135±5°C (275±9°F)	135±5°C (275±9°F)	135±5°C (275±9°F)	135±5°C (275±9°F)
Capacitor Included	10µF	22µF	8µF	22µF
Weight	6.5kg (14.3lbs)	6.5kg (14.3lbs)	6.5kg (14.3lbs)	6.5kg (14.3lbs)

Performance Chart



The information presented in this material is based on technical data and test results of nominal units. It is believed to be accurate and reliable and is offered as an aid to help in the selection of GSE products. It is the responsibility of the user to determine the suitability of the product for their intended use and the user assumes all risk and liability whatsoever in connection therewith. GSE does not warrant, guarantee or assume any obligation or liability in connection with this information.

Technical Drawings





+1 (920) 234 5113

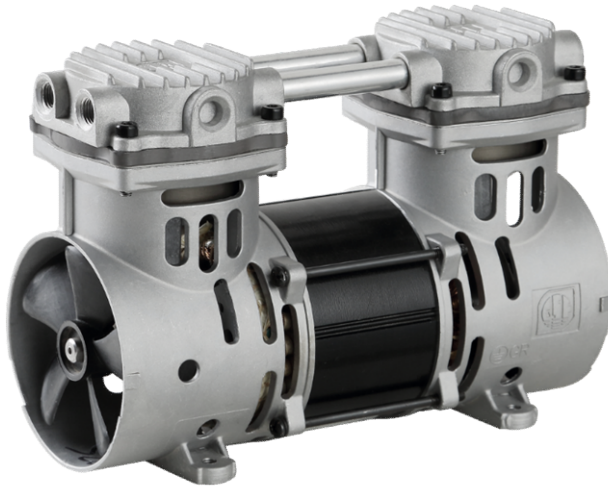
+852 2635 2285

+52(55)55 74 20 76

+44 7716 825015

email: info@gseint.com

web: www.gseint.com



Twin Headed Vacuum Pump

ZW280V/S

Open Flow 103lpm (3.64cfm)

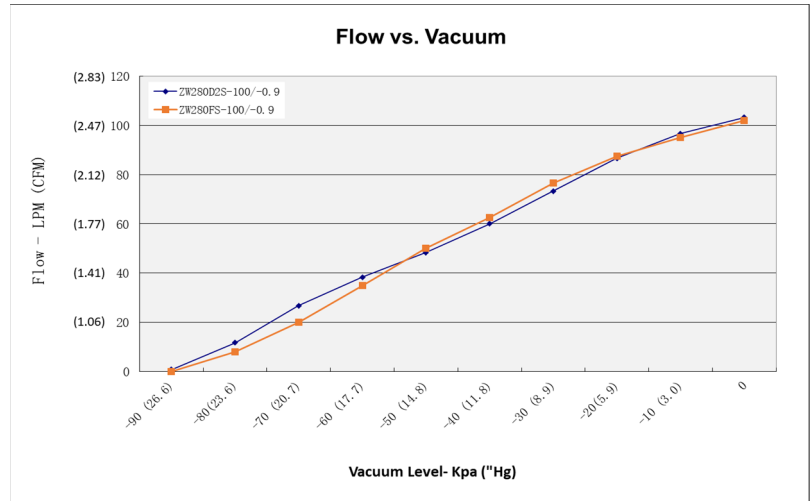
Max. Vacuum -900mbar (26.6"Hg)

- Long-life invert piston cup special design for vacuum application
- Permanently lubricated bearings
- Oil-less, non-lubricated cup and cylinder
- Long-life cup design
- Thin wall cylinder for good heat transfer
- Stainless steel valves
- Capacitor as standard
- Field service ability
- Recoverable thermally protected motor
- Other voltage and configuration available upon request

Specifications

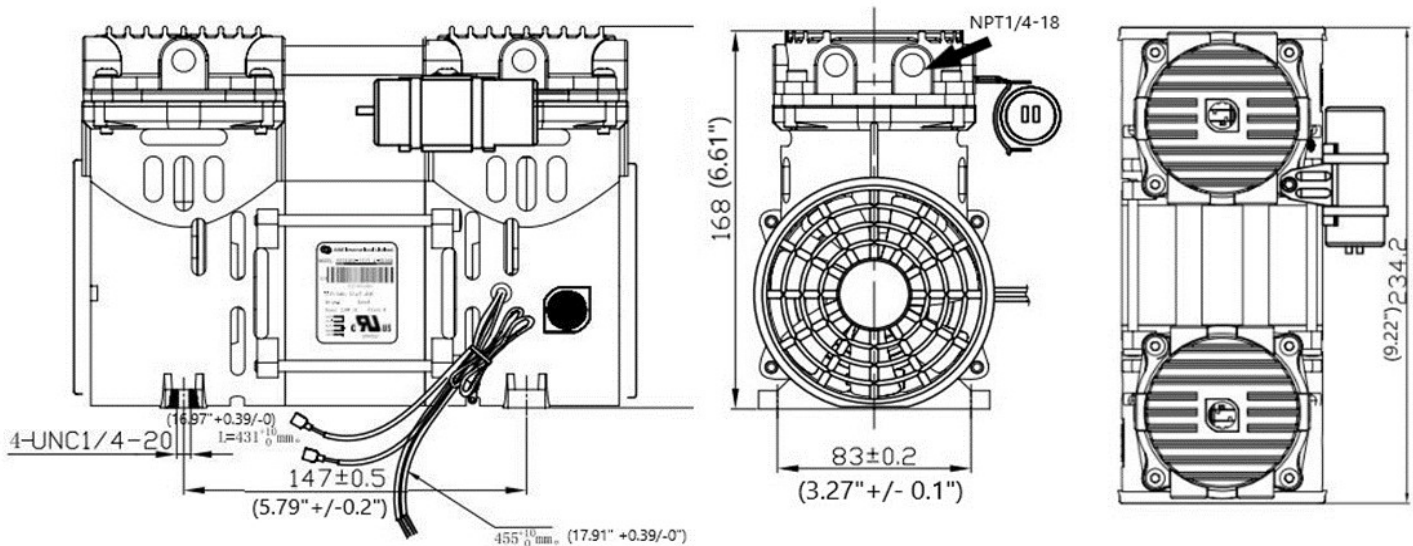
Model	ZW280D2S-100/-0.9	ZW280FS-100/-0.9
Rated Voltage	115V/60Hz	230V/50Hz
Input Power (Open Flow)	250W (0.34HP)	208W (0.28HP)
Input Current (Open Flow)	2.3A	1.21A
Open Flow	103LPM (3.64CFM)	102LPM (3.60CFM)
Max. Continuous Vacuum	-90Kpa (26.6"Hg)	-90Kpa (26.6"Hg)
Max. Intermit Pressure	N/A	N/A
Noise Level	61dBA	59dBA
Restart Vacuum	0Kpa	0Kpa
Ambinet Temperature	5-40°C (41-104°F)	5-40°C (41-104°F)
Insulation Class	B	B
Insulation Resistance	> 500M ohm	> 500M ohm
Thermal Protect	135±5°C (275±9°F)	135±5°C (275±9°F)
Capacitor Included	10µF	6µF
Weight	6.5kg (14.3lbs)	6.5kg (14.3lbs)

Performance Chart



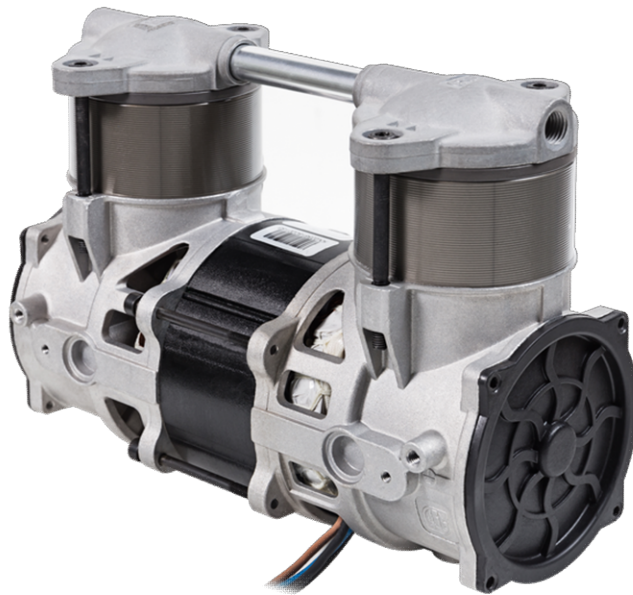
The information presented in this material is based on technical data and test results of nominal units. It is believed to be accurate and reliable and is offered as an aid to help in the selection of GSE products. It is the responsibility of the user to determine the suitability of the product for their intended use and the user assumes all risk and liability whatsoever in connection therewith. GSE does not warrant, guarantee or assume any obligation or liability in connection with this information.

Technical Drawings





+1 (920) 234 5113 
 +852 2635 2285 
 +52 (55) 55 74 20 76 
 +44 7716 825015 
 email: info@gseint.com
 web: www.gseint.com



Twin Headed Rocking Piston

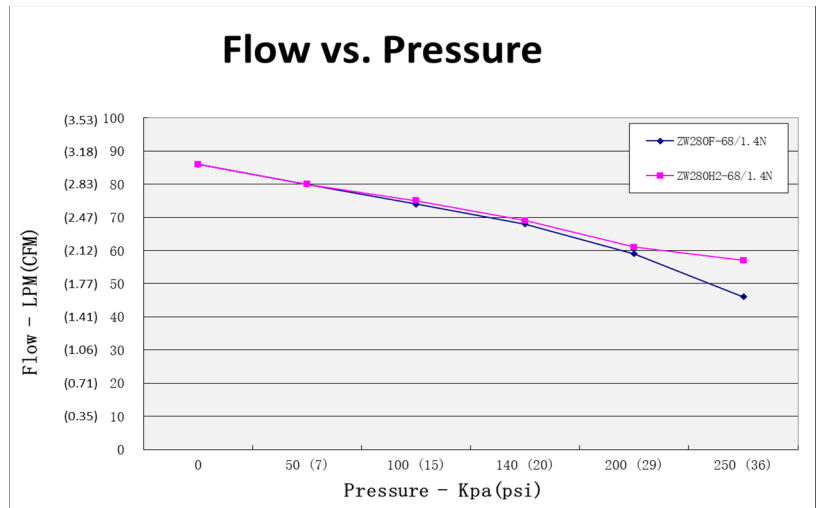
ZW280N
 Open Flow **86lpm (3.04cfm)**
 Max. Pressure **2.1bar (30.5psi)**
 Max. Vacuum **-550mbar (16.2"Hg)**

- Permanently lubricated bearings
- Oil-less, non-lubricated cup and cylinder
- Long-life cup design
- Thin wall cylinder for good heat transfer
- Stainless steel valves
- Capacitor as standard
- Super quiet, no cooling fan
- Recoverable thermally protected motor
- Other voltage and configuration available upon request

Specifications

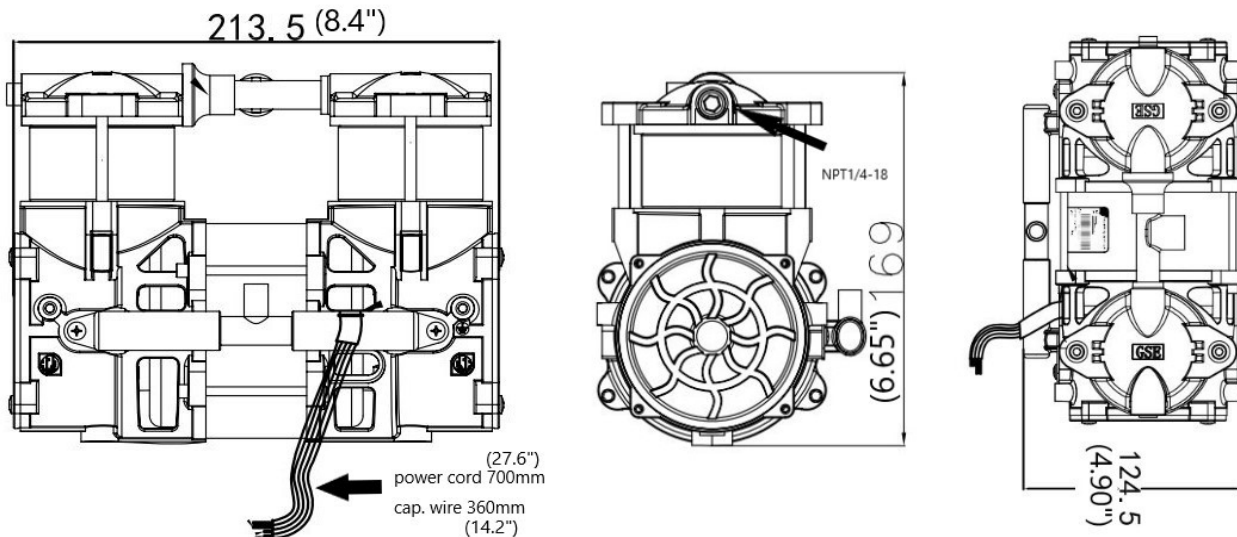
Model	ZW280F-68/1.4N	ZW280H2-68/1.4N
Rated Voltage	230V/50Hz	120V/60Hz
Rated Input Power	310W@1.4bar (0.42HP@20psi)	300W@1.4bar (0.40HP@20psi)
Input Current	1.45A@1.4bar (1.45A@20psi)	2.60A@1.4bar (2.60A@20psi)
Air Flow at rated Pressure	68LPM (2.40CFM)	68LPM (2.40CFM)
Max. Continuous Pressure	1.4bar (20psi)	1.4bar (20psi)
Max. Intermit Pressure	2.1bar (30psi)	2.1bar (39psi)
Noise Level	52dBA	54dBA
Restart Pressure	0Kpa (0psi)	0Kpa (0psi)
Ambient Temperature	5-40°C (41-104°F)	5-40°C (41-104°F)
Insulation Class	B	B
Insulation Resistance	> 500M ohm	> 500M ohm
Thermal Protect	145±5°C (293±9°F)	145±5°C (293±9°F)
Capacitor Included	8µF	20µF
Weight	4.7kg (10.3lbs)	4.7kg (10.3lbs)

Performance Chart



The information presented in this material is based on technical data and test results of nominal units. It is believed to be accurate and reliable and is offered as an aid to help in the selection of GSE products. It is the responsibility of the user to determine the suitability of the product for their intended use and the user assumes all risk and liability whatsoever in connection therewith. GSE does not warrant, guarantee or assume any obligation or liability in connection with this information.

Technical Drawings





Twin Headed Rocking Piston

ZW300 Series

Open Flow **99lpm (3.5cfm)**

Max. Pressure (INT.) **2.5bar (36psi)**

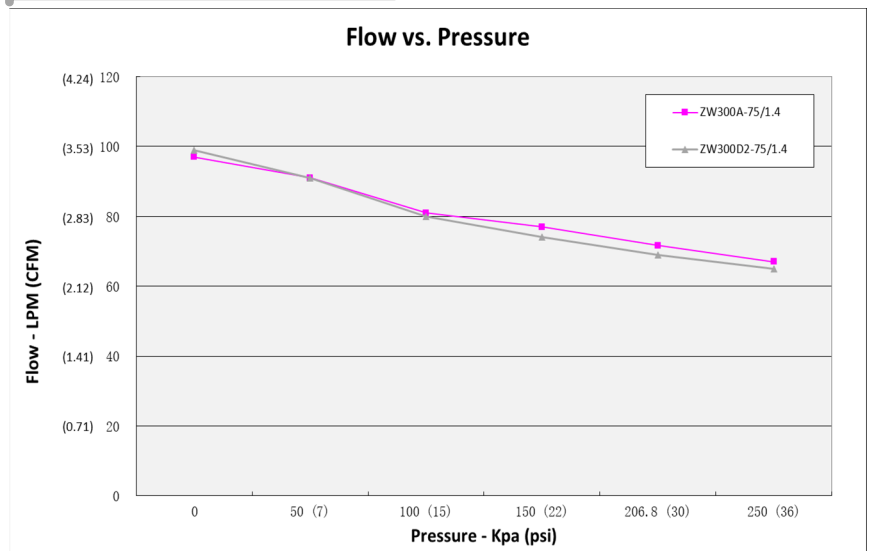
Max. Vacuum **-860mbar (25.4"Hg)**

- Permanently lubricated bearings
- Oil-less, non-lubricated cup and cylinder
- Long-life cup design
- Thin wall cylinder for good heat transfer
- Stainless steel valves
- Capacitor as standard
- Field service ability
- Recoverable thermally protected motor
- Other voltage and configuration available upon request

Specifications

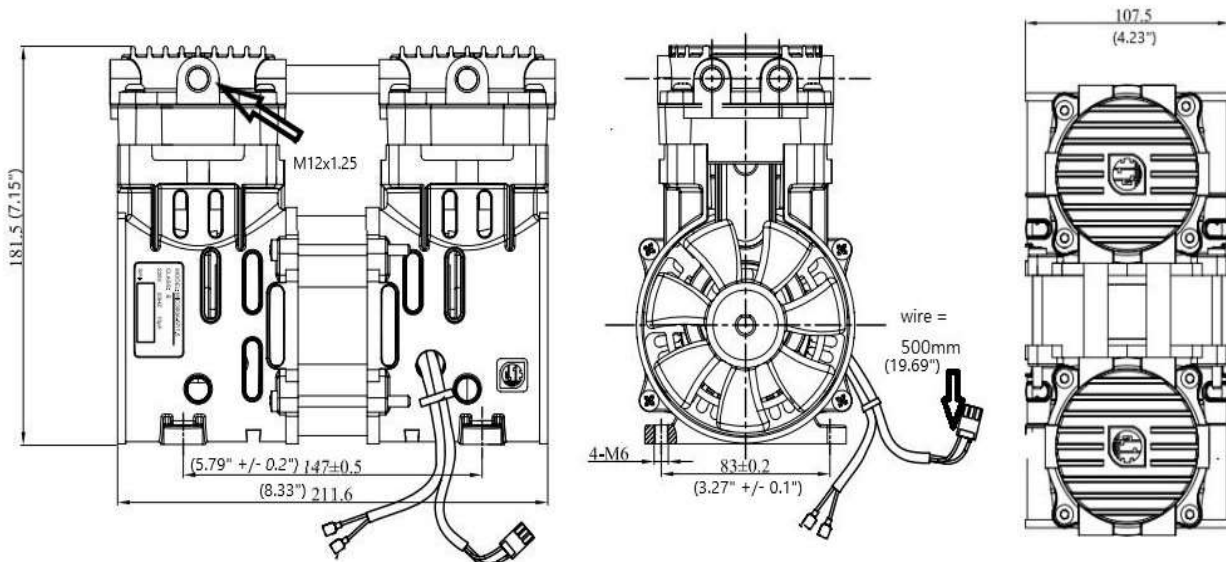
Model	ZW300A-75/1.4	ZW300D2-75/1.4
Rated Voltage	220V/50Hz	115V/60Hz
Rated Input Power	370W (0.50HP)	340W (0.46HP)
Input Current	1.45A	3.1A
Air Flow at rated Pressure	76LPM@1.4bar 2.68CFM@20psi	75LPM@1.4bar 2.65CFM@20psi
Max. Continuous Pressure	2bar (29psi)	2bar (29psi)
Max. Intermit Pressure	2.5bar (36psi)	2.5bar (36psi)
Noise Level	57dBA	60dBA
Restart Pressure	0Kpa (0psi)	0Kpa (0psi)
Ambinet Temperature	5-40°C (41-104°F)	0-40°C (32-104°F)
Insulation Class	B	B
Insulation Resistance	> 500M ohm	> 500M ohm
Thermal Protect	135±5°C (275±9°F)	135±5°C (275±9°F)
Capacitor Included	10µF	22.5µF
Weight	5.5kg (12.1lbs)	5.75kg (12.7lbs)

Performance Chart



The information presented in this material is based on technical data and test results of nominal units. Its is believed to be accurate and reliable and is offered as an aid to help in the selection of GSE products. It is the responsibility of the user to determine the suitability of the product for their intended use and the user assumes all risk and liability whatsoever in connection therewith. GSE does not warrant, guarantee or assume any obligation or liability in connection with this information.

Technical Drawings





Twin Headed Rocking Piston

ZW300VS Series

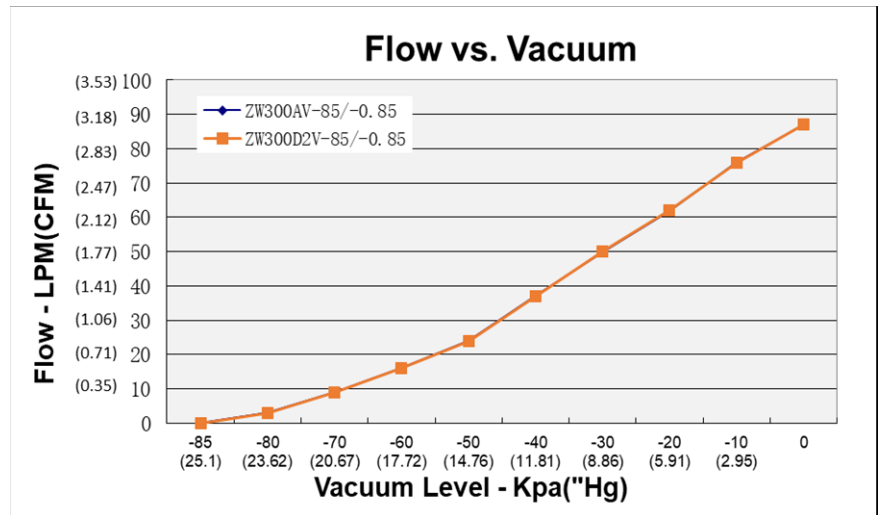
Open Flow	87lpm (3.07cfm)
Max. Pressure (INT.)	N/A
Max. Vacuum	-850mbar (25.1"Hg)

- Permanently lubricated bearings
- Oil-less, non-lubricated cup and cylinder
- Long-life cup design
- Thin wall cylinder for good heat transfer
- Stainless steel valves
- Capacitor as standard
- Field service ability
- Recoverable thermally protected motor
- Other voltage and configuration available upon request

Specifications

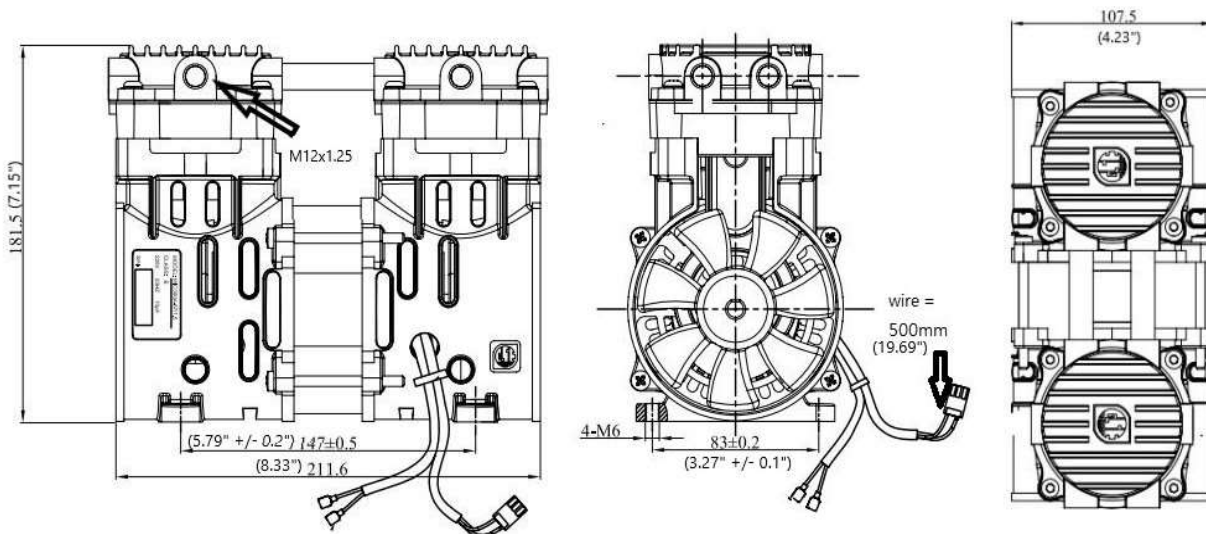
Model	ZW300AS-85/-0.85	ZW300D2S-85/-0.85
Rated Voltage	220V/50Hz	115V/60Hz
Rated Input Power	320W (0.43HP)	320W (0.43HP)
Input Current	1.65A	3.1A
Air Flow at rated Pressure	87LPM@0bar 3.07CFM@0psi	87LPM@0bar 3.07CFM@0psi
Max. Continuous Vacuum	-0.85bar (25.1"Hg)	-0.85bar (25.1"Hg)
Noise Level	61dBA	61dBA
Restart Pressure	0Kpa (0psi)	0Kpa (0psi)
Ambient Temperature	5-40°C (41-104°F)	5-40°C (41-104°F)
Insulation Class	B	B
Insulation Resistance	> 500M ohm	> 500M ohm
Thermal Protect	135±5°C (275±9°F)	135±5°C (275±9°F)
Capacitor Included	10µF	22µF
Weight	6.1kg (13.5lbs)	6.1kg (13.5lbs)

Performance Chart



The information presented in this material is based on technical data and test results of nominal units. It is believed to be accurate and reliable and is offered as an aid to help in the selection of GSE products. It is the responsibility of the user to determine the suitability of the product for their intended use and the user assumes all risk and liability whatsoever in connection therewith. GSE does not warrant, guarantee or assume any obligation or liability in connection with this information.

Technical Drawings





+1 (920) 234 5113 
 +852 2635 2285 
 +52 (55) 55 74 20 76 
 +44 7716 825015 
 email: info@gseint.com
 web: www.gseint.com



Twin Headed Rocking Piston

ZW300Z Series

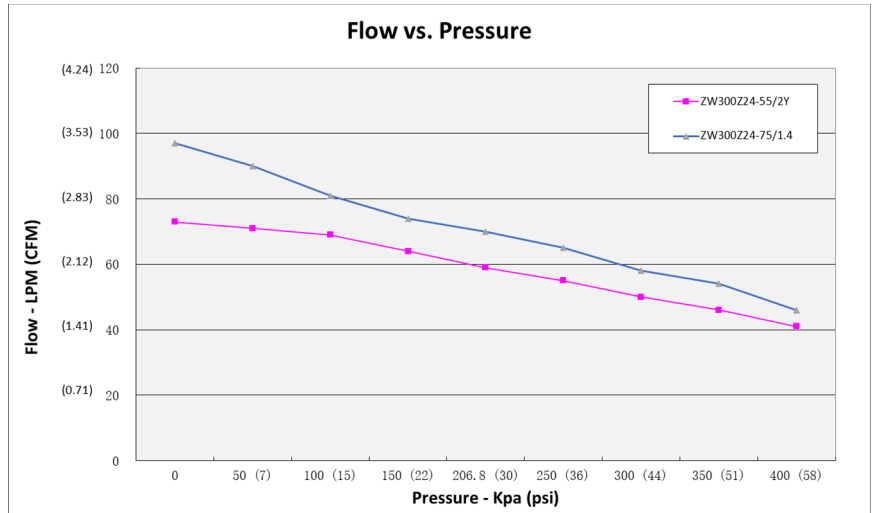
Open Flow 97lpm (3.43cfm)
Max. Pressure 4bar (58psi)
Max. Vacuum -700mbar (20.7"Hg)

- Permanently lubricated bearings
- Oil-less, non-lubricated cup and cylinder
- Long-life cup design
- High efficiency model
- BLDC motor with external PWM control board
- Continuous operation
- Designed for oxygen concentrator
- With flexibility for all BLDC device

Specifications

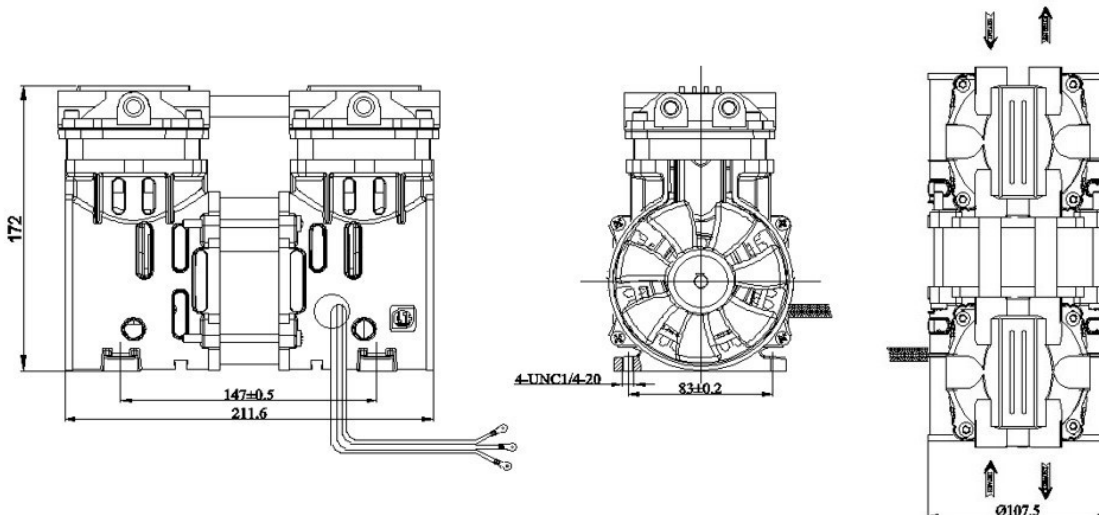
Model	ZW300Z24-55/2Y	ZW300Z24-75/1.4
Rated Voltage	24VDC	24VDC
Rated Input Power	330W (0.44HP)	350W (0.47HP)
Input Current	14A	14.5A
Air Flow at rated Pressure	59LPM@2.1bar (2.08CFM@30psi)	75LPM@1.4bar (2.65LPM@20psi)
Max. Continuous Pressure	2.1bar (30psi)	1.4bar (20.3psi)
Max. Intermit Pressure	4bar (58psi)	2bar (29psi)
Noise Level	65dBA	65dBA
Restart Pressure	206.8Kpa (30psi)	0Kpa (0psi)
Ambinet Temperature	5-40°C (41-104°F)	5-40°C (41-104°F)
Insulation Class	B	B
Insulation Resistance	> 500M ohm	> 500M ohm
Current Protect	20A	20A
Voltage Protect	<20.4VDC, >30VDC	<20.4VDC, >30VDC
Weight	5.5kg (12.1lbs)	6.1kg (13.5lbs)

Performance Chart



The information presented in this material is based on technical data and test results of nominal units. It is believed to be accurate and reliable and is offered as an aid to help in the selection of GSE products. It is the responsibility of the user to determine the suitability of the product for their intended use and the user assumes all risk and liability whatsoever in connection therewith. GSE does not warrant, guarantee or assume any obligation or liability in connection with this information.

Technical Drawings





Twin Headed Vacuum Pump

ZW370V/S

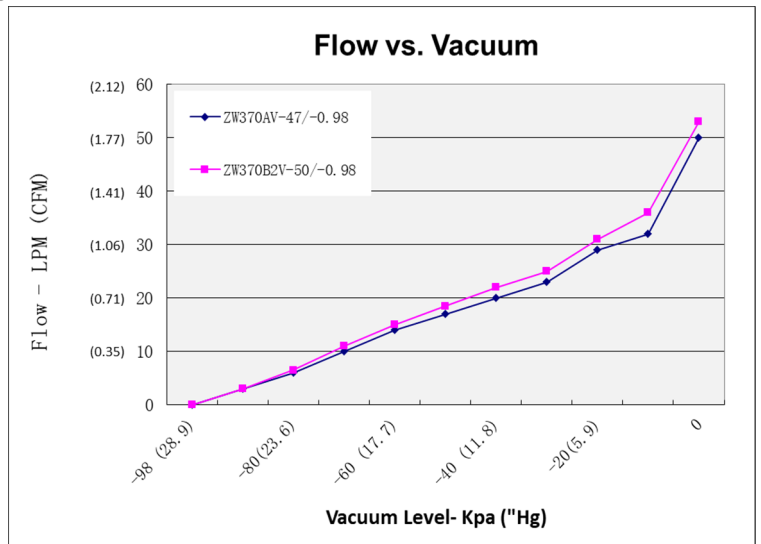
Open Flow **50lpm (1.77cfm)**
 Max. Vacuum **-980mbar (28.9"Hg)**

- Long-life invert piston cup special design for vacuum application
- Permanently lubricated bearings
- Oil-less, non-lubricated cup and cylinder
- Long-life cup design
- Thin wall cylinder for good heat transfer
- Stainless steel valves
- Capacitor as standard
- Field service ability
- Recoverable thermally protected motor
- Other voltage and configuration available upon request

Specifications

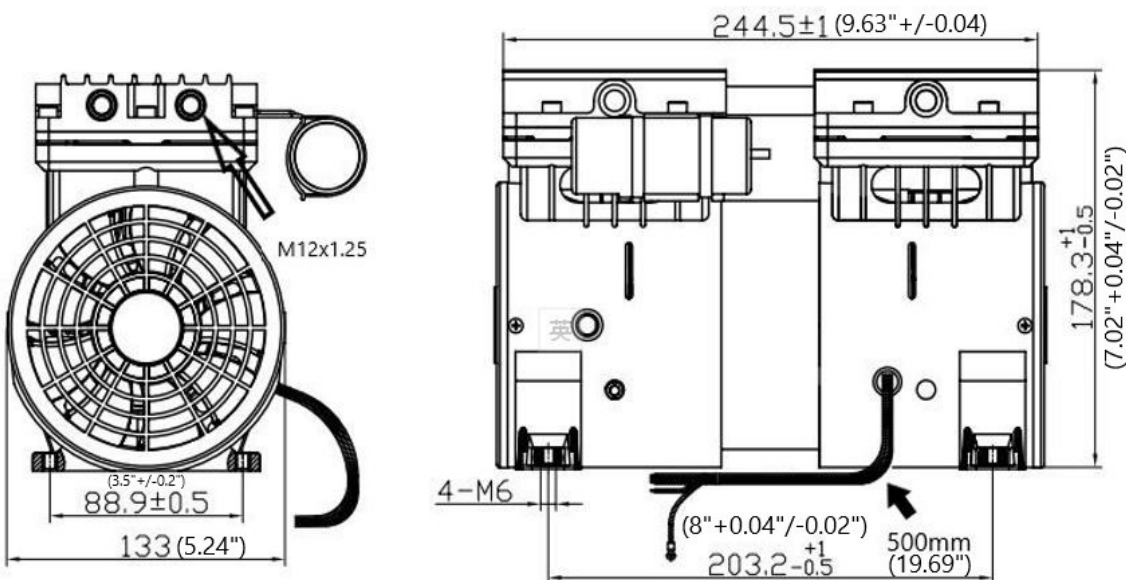
Model	ZW370AV-47/-0.98	ZW370B2V-50/-0.98
Rated Voltage	220V/50Hz	110V/60Hz
Input Power (Open Flow)	300W (0.40HP)	280W (0.38HP)
Input Current (Open Flow)	1.4A	2.5A
Open Flow	47LPM (1.66CFM)	50LPM (1.77CFM)
Max. Continuous Vacuum	-98Kpa (28.9"Hg)	-98Kpa (28.9"Hg)
Max. Intermit Pressure	N/A	N/A
Noise Level	62dBA	63dBA
Restart Vacuum	0Kpa	0Kpa
Ambinet Temperature	5-40°C (41-104°F)	5-40°C (41-104°F)
Insulation Class	B	B
Insulation Resistance	> 500M ohm	> 500M ohm
Thermal Protect	135±5°C (275±9°F)	135±5°C (275±9°F)
Capacitor Included	22.5µF	22.5µF
Weight	7.8kg (17.7lbs)	7.8kg (17.7lbs)

Performance Chart



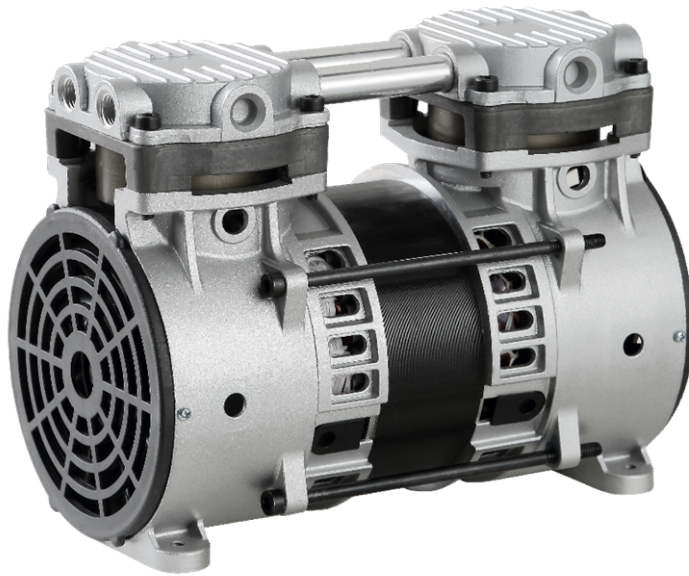
The information presented in this material is based on technical data and test results of nominal units. Its is believed to be accurate and reliable and is offered as an aid to help in the selection of GSE products. It is the responsibility of the user to determine the suitability of the product for their intended use and the user assumes all risk and liability whatsoever in connection therewith. GSE does not warrant, guarantee or assume any obligation or liability in connection with this information.

Technical Drawings





+1 (920) 234 5113 
 +852 2635 2285 
 +52 (55) 55 74 20 76 
 +44 7716 825015 
 email: info@gseint.com
 web: www.gseint.com



Twin Headed Rocking Piston

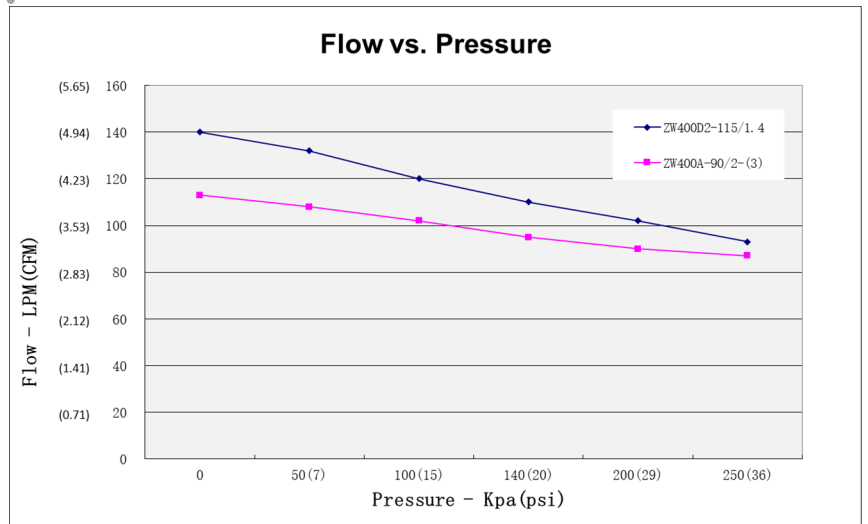
Open Flow **ZW400(B) Series**
140lpm(4.94cfm)
Max. Pressure (INT.) **3bar(44psi)**
Max. Vacuum **-900mbar(26.6"Hg)**

- Permanently lubricated bearings
- Oil-less, non-lubricated cup and cylinder
- Long-life cup design
- Thin wall cylinder for good heat transfer
- Stainless steel valves
- Capacitor as standard
- Field service ability
- Recoverable thermally protected motor
- Other voltage and configuration available upon request

Specifications

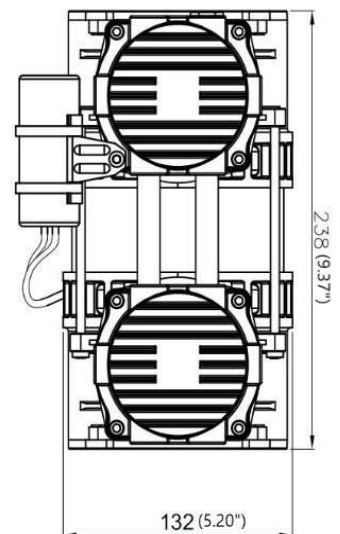
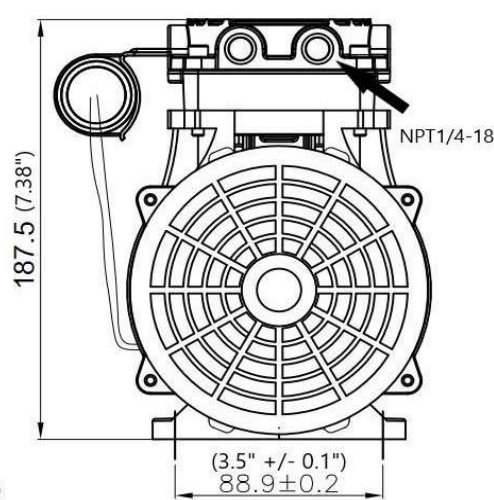
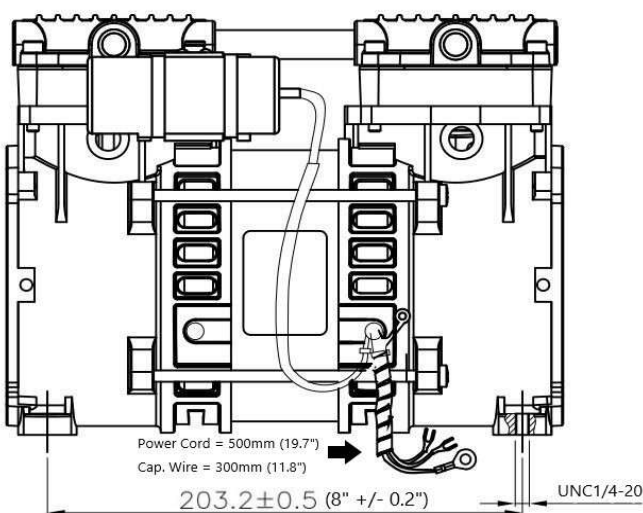
Model	ZW400A-90/2-(3)	ZW400D2-115/1.4
Rated Voltage	220V/50Hz	115V/60Hz
Rated Input Power	510W (0.68HP)	600W (0.80HP)
Input Current	3.8A	5.45A
Air Flow at rated Pressure	90LPM@2bar (3.18CFM@29psi)	109LPM@1.4bar (3.85CFM@20psi)
Max. Continuous Pressure	2.5bar (36.3psi)	2.068bar (30psi)
Max. Intermittent Pressure	3bar (44psi)	3bar (44psi)
Noise Level	62dBA	62dBA
Restart Pressure	0Kpa (0psi)	0Kpa (0psi)
Ambient Temperature	5-40°C (41-104°F)	5-40°C (41-104°F)
Insulation Class	B	B
Insulation Resistance	> 500M ohm	> 500M ohm
Thermal Protect	135±5°C (275±9°F)	135±5°C (275±9°F)
Capacitor Included	12.5µF	30µF
Weight	7.5kg (16.5lbs)	7.5kg (16.5lbs)

Performance Chart



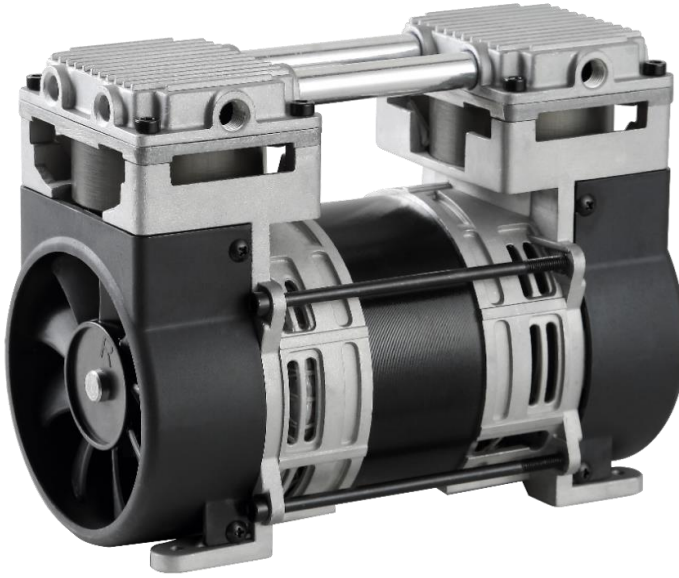
The information presented in this material is based on technical data and test results of nominal units. It is believed to be accurate and reliable and is offered as an aid to help in the selection of GSE products. It is the responsibility of the user to determine the suitability of the product for their intended use and the user assumes all risk and liability whatsoever in connection therewith. GSE does not warrant, guarantee or assume any obligation or liability in connection with this information.

Technical Drawings





+1 (920) 234 5113 
 +852 2635 2285 
 +52 (55) 55 74 20 76 
 +44 7716 825015 
 email: info@gseint.com
 web: www.gseint.com



Twin Headed Rocking Piston

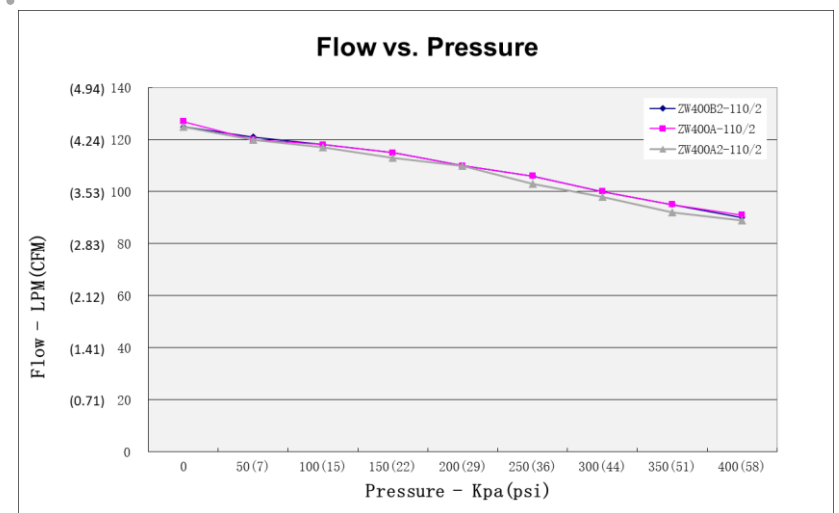
Open Flow **ZW400(C) Series** 127lpm(4.48cfm)
Max. Pressure (INT.) 2.5bar(36.3psi)
Max. Vacuum -800mbar(23.6"Hg)

- Permanently lubricated bearings
- Oil-less, non-lubricated cup and cylinder
- Long-life cup design
- Thin wall cylinder for good heat transfer
- Stainless steel valves
- Capacitor as standard
- Field service ability
- Recoverable thermally protected motor
- Other voltage and configuration available upon request

Specifications

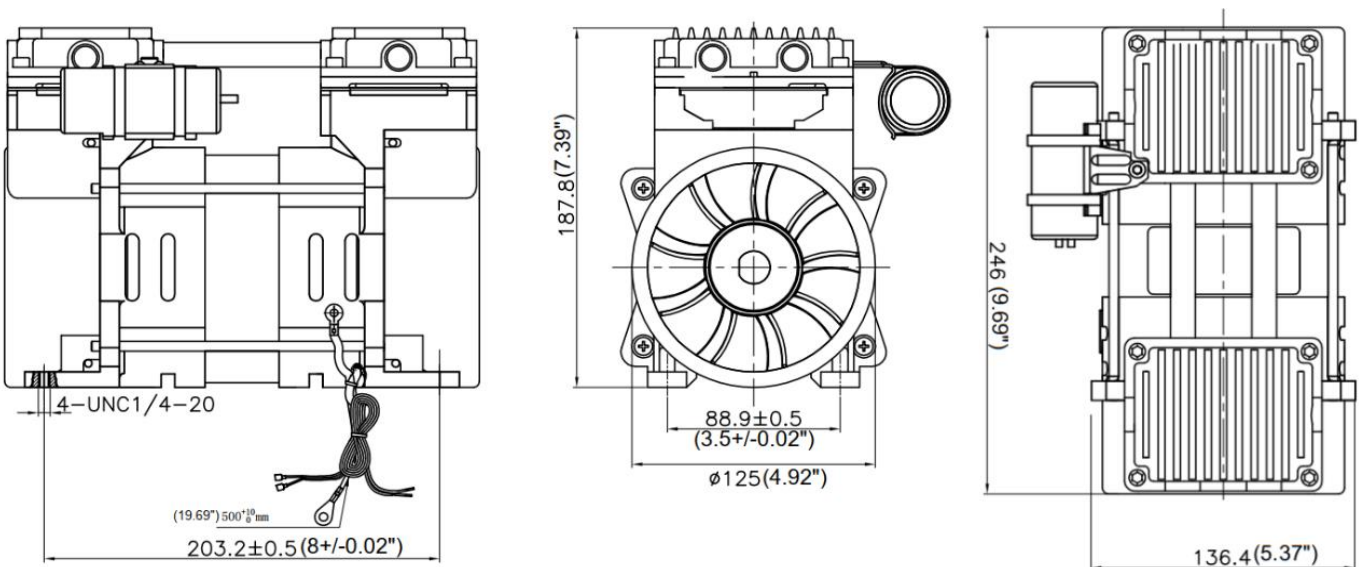
Model	ZW400A-110/2	ZW400B2-110/2	ZW400A2-110/2
Rated Voltage	220V/50Hz	110V/60Hz	220V/60Hz
Rated Input Power	610W (0.82HP)	630W (0.84HP)	630W (0.84HP)
Input Current	3.0A	5.8A	3.1A
Air Flow at rated Pressure	110LPM@2bar (3.88CFM@29psi)	110LPM@2bar (3.88CFM@29psi)	108LPM@2bar (3.81CFM@29psi)
Max. Continuous Pressure	2bar (29psi)	2.068bar (30psi)	2.068bar (30psi)
Max. Intermitt Pressure	2.5bar (36.3psi)	2.5bar (36.3psi)	2.5bar (36.3psi)
Noise Level	66dBA	68dBA	68dBA
Restart Pressure	0Kpa (0psi)	0Kpa (0psi)	0Kpa (0psi)
Ambient Temperature	5-40°C (41-104°F)	5-40°C (41-104°F)	5-40°C (41-104°F)
Insulation Class	B	B	B
Insulation Resistance	> 500M ohm	> 500M ohm	> 500M ohm
Thermal Protect	145±5°C (293±9°F)	145±5°C (293±9°F)	145±5°C (293±9°F)
Capacitor Included	15µF	60µF	15µF
Weight	8.4kg (18.5lbs)	8.4kg (18.5lbs)	8.4kg (18.5lbs)

Performance Chart



The information presented in this material is based on technical data and test results of nominal units. It is believed to be accurate and reliable and is offered as an aid to help in the selection of GSE products. It is the responsibility of the user to determine the suitability of the product for their intended use and the user assumes all risk and liability whatsoever in connection therewith. GSE does not warrant, guarantee or assume any obligation or liability in connection with this information.

Technical Drawings





+1 (920) 234 5113

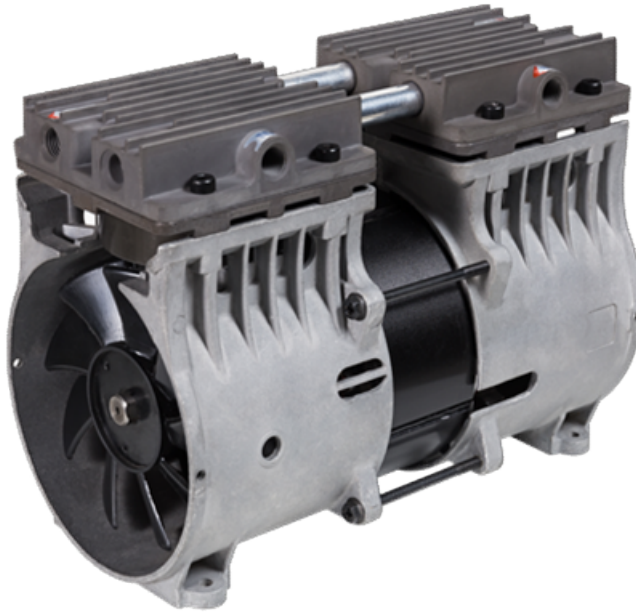
+852 2635 2285

+52 (55) 55 74 20 76

+44 7716 825015

email: info@gseint.com

web: www.gseint.com



Twin Headed Vacuum Pump

ZW400 V/S

Open Flow **200lpm (7.06cfm)**

Max. Vacuum **-974mbar (28.8"Hg)**

1g-life invert piston cup special design for vacuum application

Permanently lubricated bearings

Oil-less, non-lubricated cup and cylinder

Long-life cup design

Stainless steel valves

Capacitor as standard

Field service ability

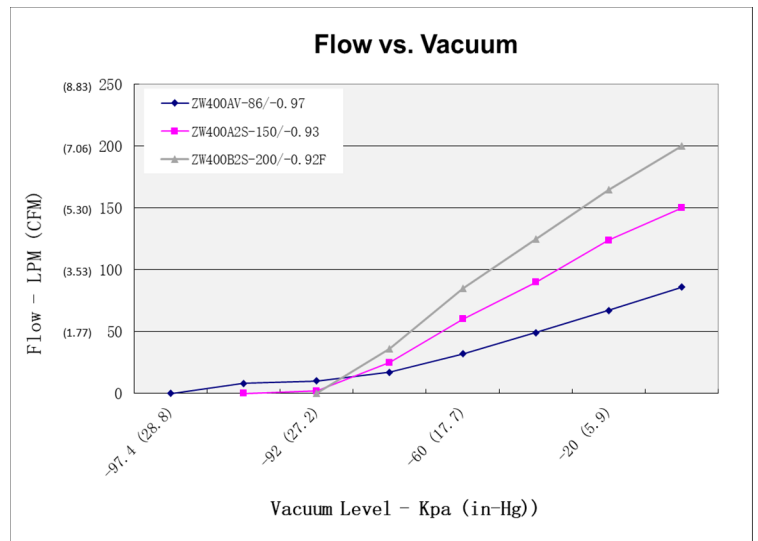
Recoverable thermally protected motor

Other voltage and configuration available upon request

Specifications

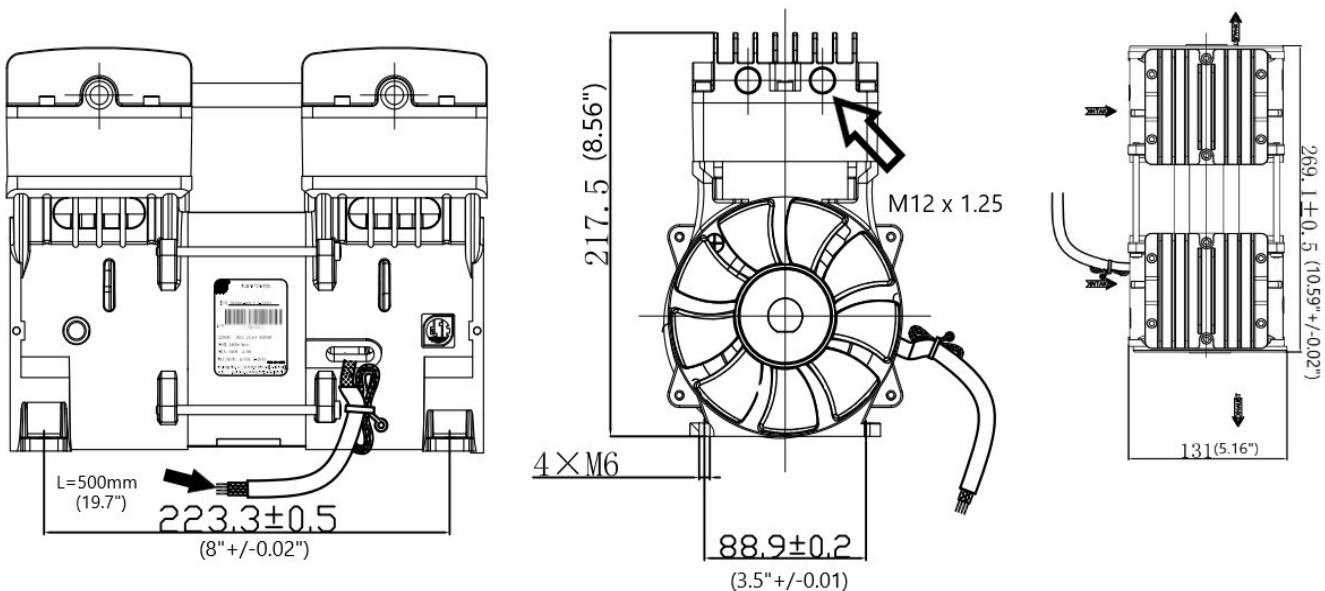
Model	ZW400AV-86/-0.97-(2.5)	ZW400A2S-150/-0.93	ZW400B2S-200/-0.92F
Rated Voltage	220V/50Hz	220V/60Hz	110V/60Hz
Rated Input Power	420W (0.56HP)	520W (0.70HP)	650W (0.87HP)
Input Current	2A	2.4A	4.5A
Air Flow at open ressure	86LPM (3.04CFM)	150LPM (5.30CFM)	200LPM (7.06CFM)
Maximum Vacuum	-97.4Kpa (28.8"Hg)	-93Kpa (27.5"Hg)	-92Kpa (27.2"Hg)
Noise Level	64dBA	70dBA	70dBA
Restart Vacuum	0Kpa (0psi)	0Kpa (0psi)	0Kpa (0psi)
Ambinet Temperature	5-40°C (41-104°F)	5-40°C (41-104°F)	5-40°C (41-104°F)
Insulation Class	B	B	B
Insulation Resistance	> 500M ohm	> 500M ohm	> 500M ohm
Thermal Protect	145±5°C (293±9°F)	145±5°C (293±9°F)	145±5°C (293±9°F)
Capacitor Included	25µF	12.5µF	45µF
Weight	10.3kg (22.7lbs)	9.5kg (20.9lbs)	10kg (22.0lbs)

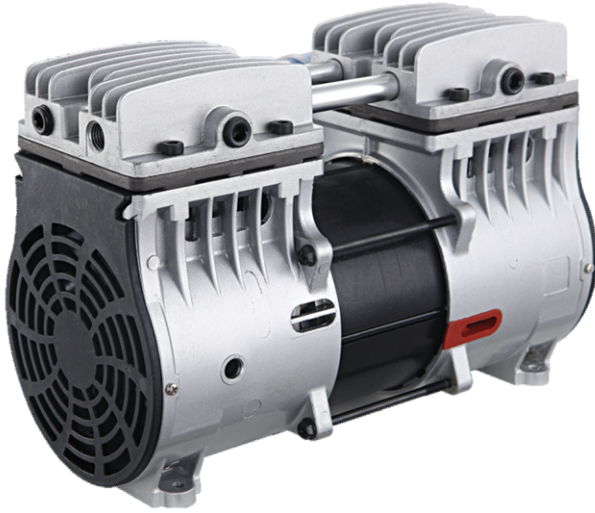
Performance Chart



The information presented in this material is based on technical data and test results of nominal units. Its is believed to be accurate and reliable and is offered as an aid to help in the selection of GSE products. It is the responsibility of the user to determine the suitability of the product for their intended use and the user assumes all risk and liability whatsoever in connection therewith. GSE does not warrant, guarantee or assume any obligation or liability in connection with this information.

Technical Drawings





Twin Headed Rocking Piston

ZW500(A)

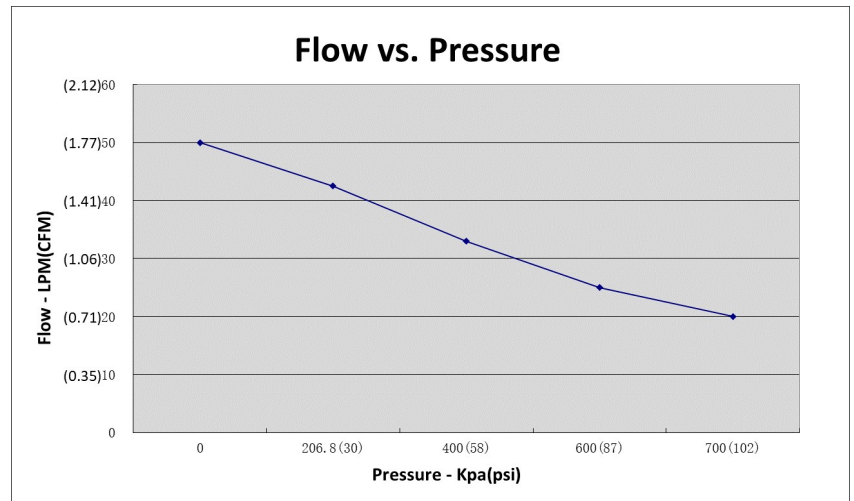
Open Flow **50lpm(1.77cfm)**
 Max. Pressure (INT.) **8bar(116psi)**
 Max. Vacuum **-900mbar(26.6"Hg)**

- Permanently lubricated bearings
- Oil-less, non-lubricated cup and cylinder
- Long-life cup design
- Thin wall cylinder for good heat transfer
- Stainless steel valves
- Capacitor as standard
- Field service ability
- Recoverable thermally protected motor
- Back pressure restart option
- Other voltage and configuration available upon request

Specifications

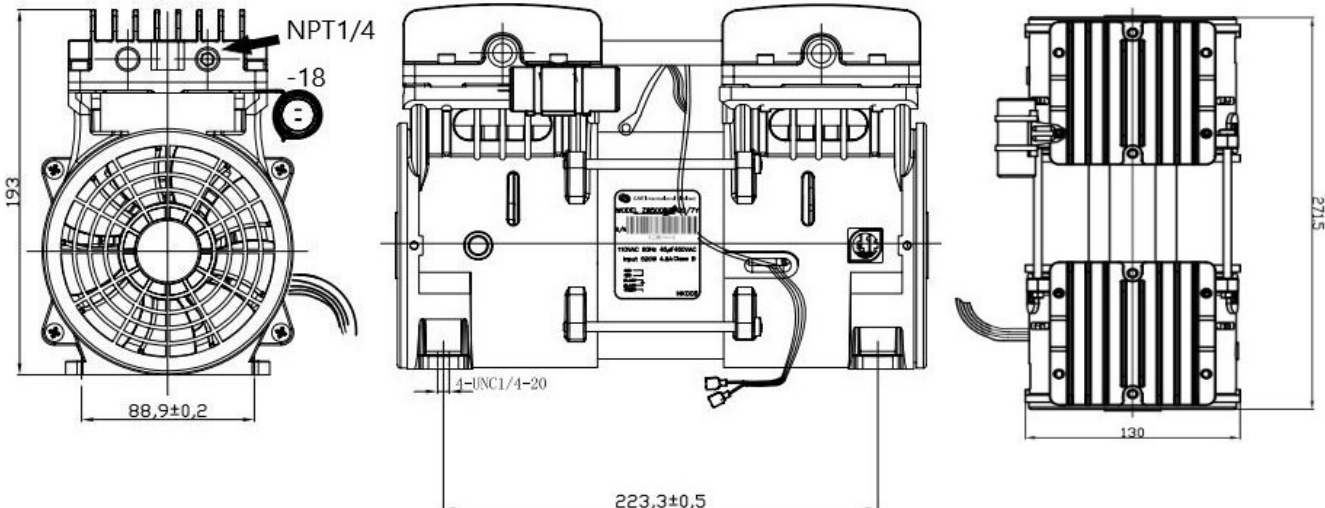
Model	ZW500B2-20/7Y-(2.5)
Rated Voltage	110V/60Hz
Rated Input Power	520W@7bar (0.70HP@102psi)
Input Current	4.8A@7bar (102psi)
Air Flow at rated Pressure	20LPM (0.71CFM)
Max. Continuous Pressure	7bar (102psi)
Max. Intermit Pressure	8bar (116psi)
Noise Level	71dBA
Restart Pressure	7bar (102psi)
Ambinet Temperature	5-40°C(41-104°F)
Insulation Class	B
Insulation Resistance	> 500M ohm
Thermal Protect	145±5°C (293±9°F)
Capacitor Included	45µF
Weight	10.3kg (22.7lbs)

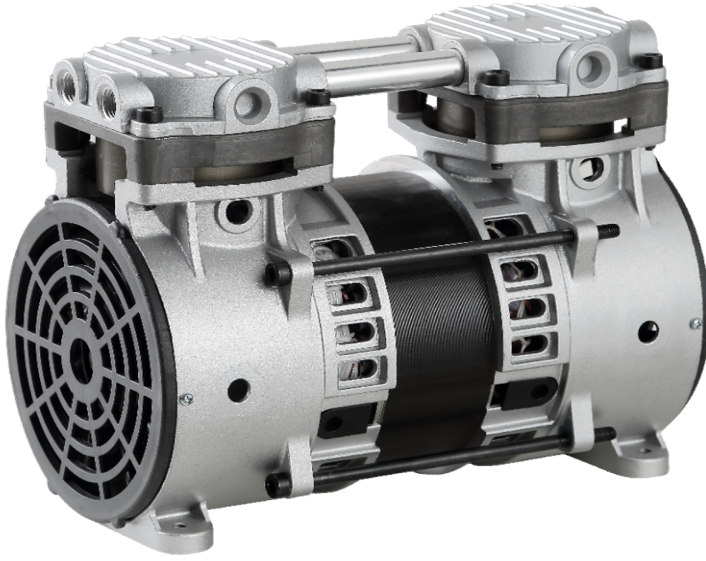
Performance Chart



The information presented in this material is based on technical data and test results of nominal units. It is believed to be accurate and reliable and is offered as an aid to help in the selection of GSE products. It is the responsibility of the user to determine the suitability of the product for their intended use and the user assumes all risk and liability whatsoever in connection therewith. GSE does not warrant, guarantee or assume any obligation or liability in connection with this information.

Technical Drawings





Twin Headed Rocking Piston

ZW500 (B) Series

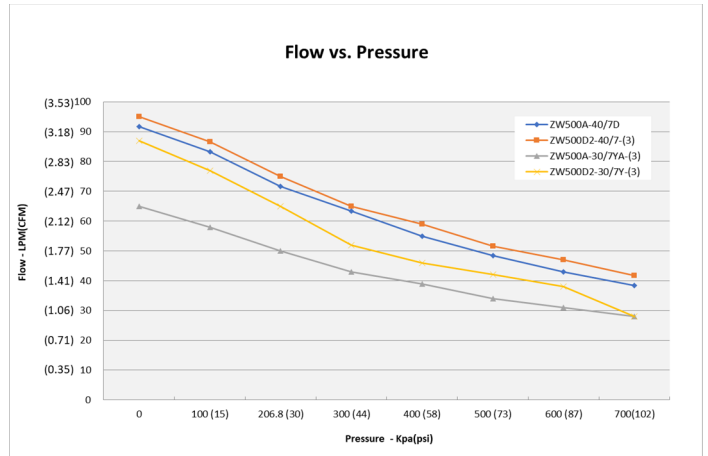
Open Flow **95lpm(3.35cfm)**
 Max. Pressure (INT.) **8bar(116psi)**
 Max. Vacuum **-900mbar(26.6"Hg)**

- Permanently lubricated bearings
- Oil-less, non-lubricated cup and cylinder
- Long-life cup design
- Thin wall cylinder for good heat transfer
- Stainless steel valves
- Capacitor as standard
- Field service ability
- Recoverable thermally protected motor
- Back pressure restart option
- Other voltage and configuration available upon request

Specifications

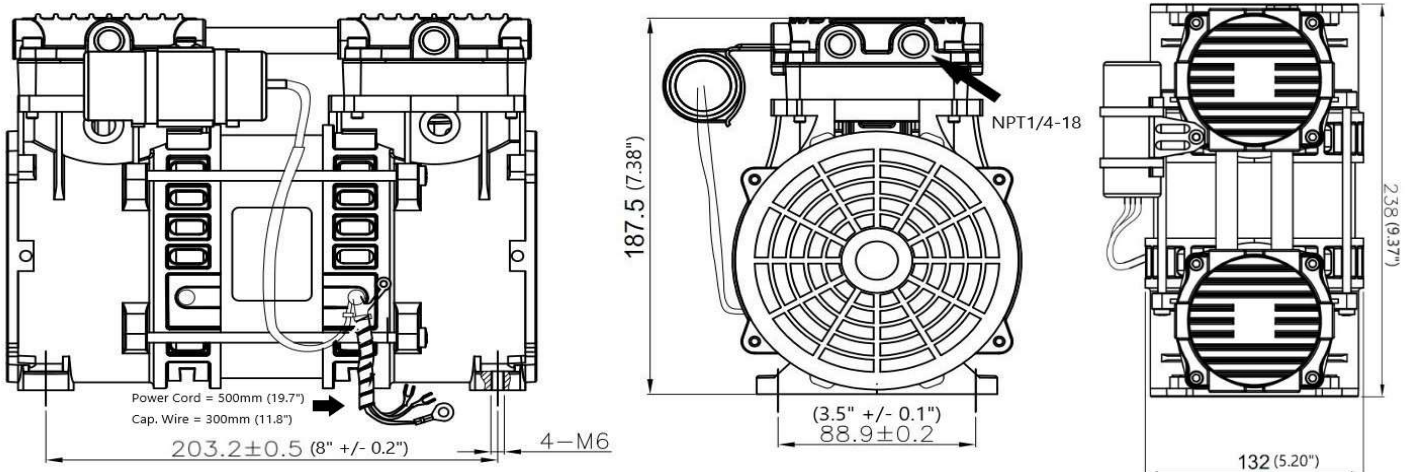
Model	ZW500A-40/7D	ZW500D2-40/7D-(3)	ZW500A-30/7YA-(3)	ZW500D2-30/7Y-(3)
Rated Voltage	220V/50Hz	115V/60Hz	220V/50Hz	115V/60Hz
Rated Input Power	570W (0.76HP)	600W (0.80HP)	540W (0.72HP)	650W (0.87HP)
Input Current	2.8A	5.7A	2.7A	5.7A
Air Flow at rated Pressure	38LPM@7bar (1.34CFM@102psi)	42LPM@7bar (1.48CFM@102psi)	31LPM@6bar (1.09CFM@87psi)	38LPM@6bar (1.34CFM@87psi)
Max. Continuous Pressure	7bar (102psi)	7bar (102psi)	7bar (102psi)	7bar (102psi)
Max. Intermit Pressure	8bar (116psi)	8bar (116psi)	8bar (116psi)	8bar (116psi)
Noise Level	64.5dBA	68.5dBA	64dBA	68dBA
Restart Pressure	0Kpa (0psi)	0Kpa (0psi)	350Kpa (51psi)	350Kpa (51psi)
Ambinet Temperature	0-40°C (32-104°F)	0-40°C (32-104°F)	0-40°C (32-104°F)	0-40°C (32-104°F)
Insulation Class	B	B	B	B
Insulation Resistance	> 500M ohm	> 500M ohm	> 500M ohm	> 500M ohm
Thermal Protect	145±5°C (293±9°F)	145±5°C (293±9°F)	145±5°C (293±9°F)	145±5°C (293±9°F)
Capacitor Included	8µF	30µF	8µF	30µF
Weight	7.5kg (16.5lbs)	7.5kg (16.5lbs)	7.5kg (16.5lbs)	7.5kg (16.5lbs)

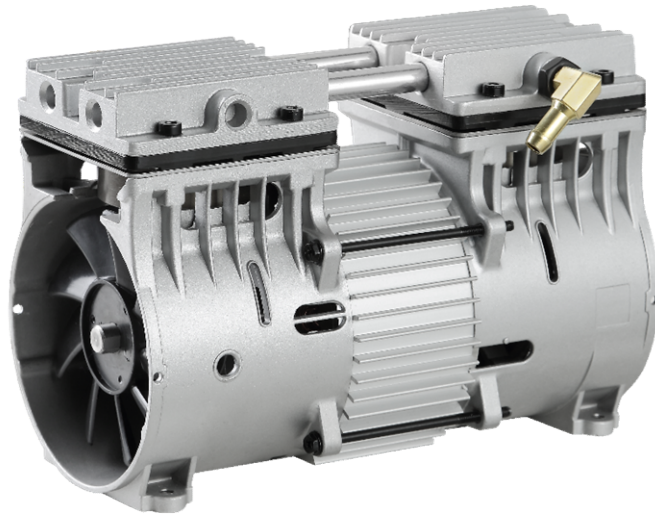
Performance Chart



The information presented in this material is based on technical data and test results of nominal units. It is believed to be accurate and reliable and is offered as an aid to help in the selection of GSE products. It is the responsibility of the user to determine the suitability of the product for their intended use and the user assumes all risk and liability whatsoever in connection therewith. GSE does not warrant, guarantee or assume any obligation or liability in connection with this information.

Technical Drawings





Twin Headed Rocking Piston

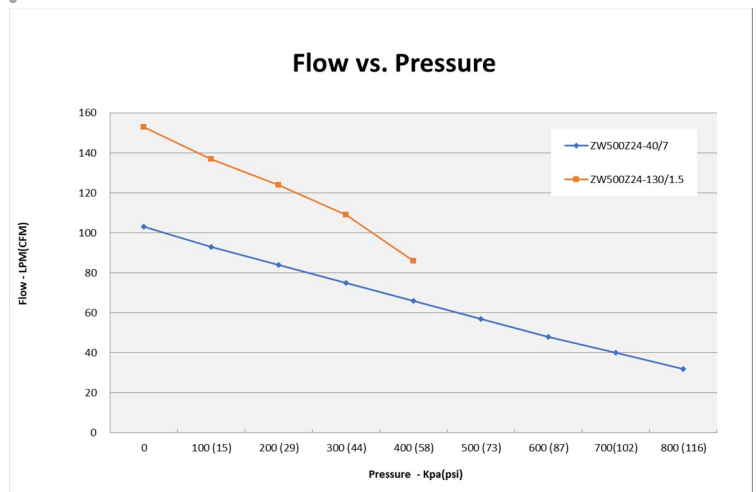
Open Flow **ZW500Z Series**
Max. Pressure **153pm (5.4cfm)**
Max. Vacuum **8bar (116psi)**
-850mbar (25.1"Hg)

- Permanently lubricated bearings
- Oil-less, non-lubricated cup and cylinder
- Long-life cup design
- High efficiency model
- BLDC motor with both Hall and PWM option
- Continuous operation
- With high pressure and high flow rate option
- With flexibility for all BLDC device

Specifications

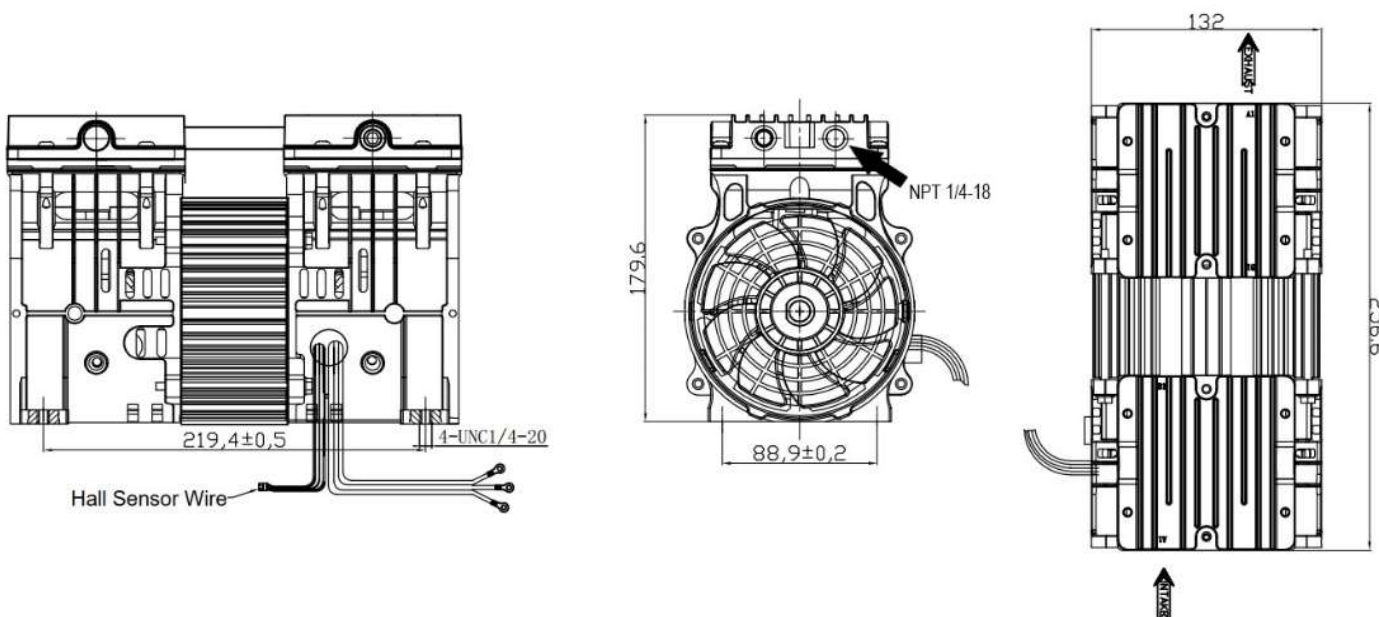
Model	ZW500Z24-40/7	ZW500Z24-130/1.5
Rated Voltage	24VDC	24VDC
Rated Input Power	600W (0.80HP)	650W (0.87HP)
Input Current	25A	27A
Air Flow at rated Pressure	40LPM@7bar (1.41CFM@102psi)	130LPM@1.5bar (4.59LPM@21.8psi)
Max. Continuous Pressure	7bar (102psi)	1.5bar (21.8psi)
Max. Intermitt Pressure	8bar (116psi)	2.5bar (36.3psi)
Noise Level	73dBA	72dBA
Restart Pressure	TBC	TBC
Ambinet Temperature	5-40°C (41-104°F)	5-40°C (41-104°F)
Insulation Class	B	B
Insulation Resistance	> 500M ohm	> 500M ohm
Current Protect	32A	35A
Voltage Protect	<20.4VDC, >30VDC	<20.4VDC, >30VDC
Weight	8kg (17.6lbs)	8kg (17.6lbs)

Performance Chart



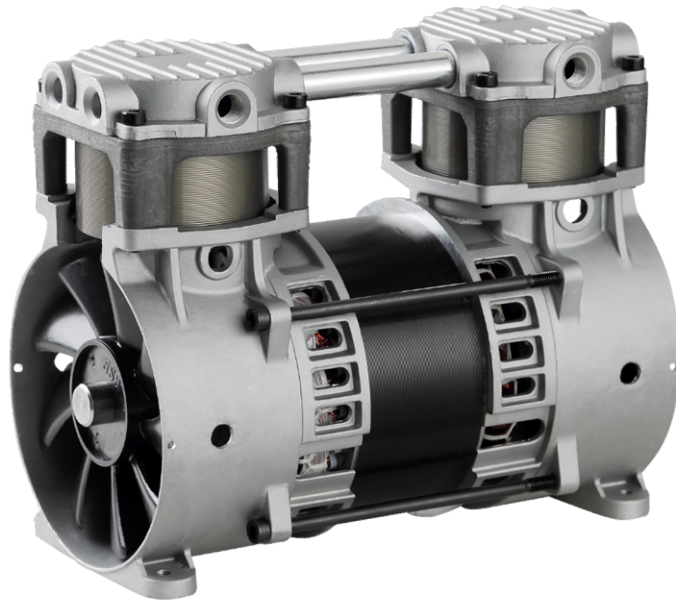
The information presented in this material is based on technical data and test results of nominal units. It is believed to be accurate and reliable and is offered as an aid to help in the selection of GSE products. It is the responsibility of the user to determine the suitability of the product for their intended use and the user assumes all risk and liability whatsoever in connection therewith. GSE does not warrant, guarantee or assume any obligation or liability in connection with this information.

Technical Drawings





+1 (920) 234 5113 
 +852 2635 2285 
 +52 (55) 55 74 20 76 
 +44 7716 825015 
 email: info@gseint.com
 web: www.gseint.com



Twin Headed Rocking Piston

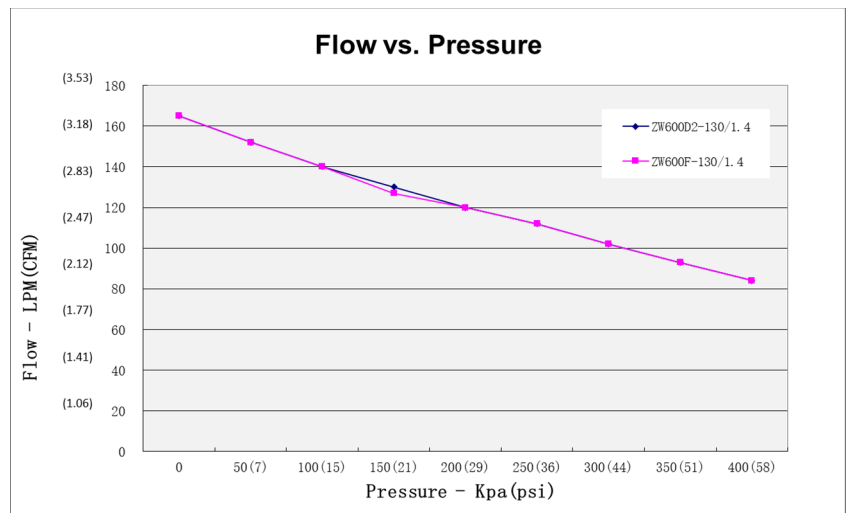
ZW600 Series
 Open Flow **165lpm(5.83cfm)**
 Max. Pressure (INT.) **2.45bar(35.5psi)**
 Max. Vacuum **-800mbar(23.6"Hg)**

- Permanently lubricated bearings
- Oil-less, non-lubricated cup and cylinder
- Long-life cup design
- Thin wall cylinder for good heat transfer
- Stainless steel valves
- Capacitor as standard
- Field service ability
- Recoverable thermally protected motor
- Other voltage and configuration available upon request

Specifications

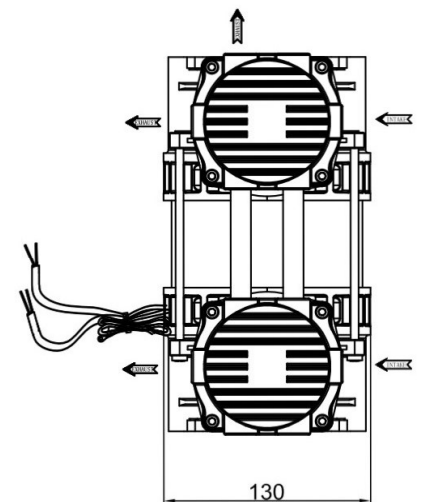
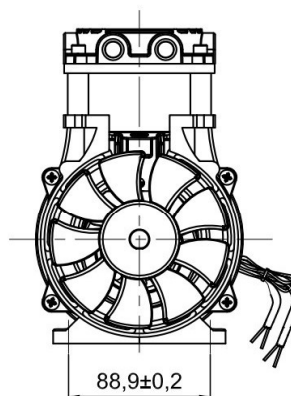
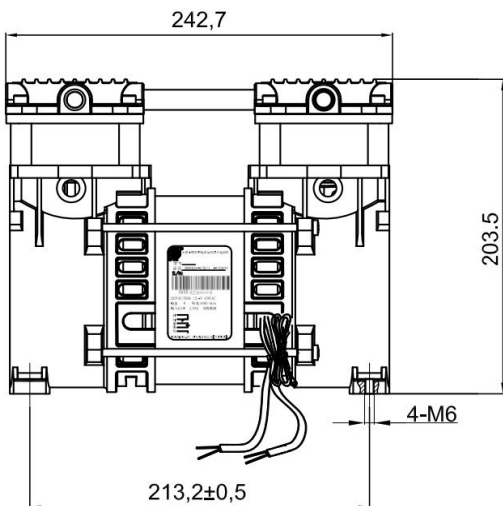
Model	ZW600F-130/1.4	ZW600D2-130/1.4
Rated Voltage	230V/50Hz	115V/60Hz
Rated Input Power	680W (0.91HP)	680W (0.91HP)
Input Current	3.2A	6.5A
Air Flow at rated Pressure	130LPM@1.45bar (4.59CFM@21psi)	130LPM@1.45bar (4.59CFM@21psi)
Max. Continuous Pressure	1.45bar (21psi)	1.45bar (21psi)
Max. Intermit Pressure	2.45bar (35.5psi)	2.45bar (35.5psi)
Noise Level	64dBA	65dBA
Restart Pressure	0Kpa (0psi)	0Kpa (0psi)
Ambinet Temperature	5-40°C (41-104°F)	5-40°C (41-104°F)
Insulation Class	B	B
Insulation Resistance	> 500M ohm	> 500M ohm
Thermal Protect	145±5°C (293±9°F)	145±5°C (293±9°F)
Capacitor Included	15µF	60µF
Weight	8.8kg (19.4lbs)	8.8kg (19.4lbs)

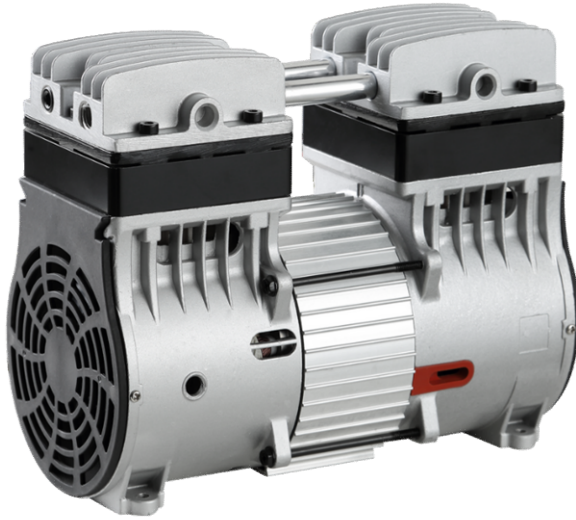
Performance Chart



The information presented in this material is based on technical data and test results of nominal units. It is believed to be accurate and reliable and is offered as an aid to help in the selection of GSE products. It is the responsibility of the user to determine the suitability of the product for their intended use and the user assumes all risk and liability whatsoever in connection therewith. GSE does not warrant, guarantee or assume any obligation or liability in connection with this information.

Technical Drawings





Twin Headed Rocking Piston

ZW700 (A) Series

Open Flow	128lpm(4.52cfm)
Max. Pressure (INT.)	8bar(116psi)
Max. Vacuum	-900mbar(26.6"Hg)

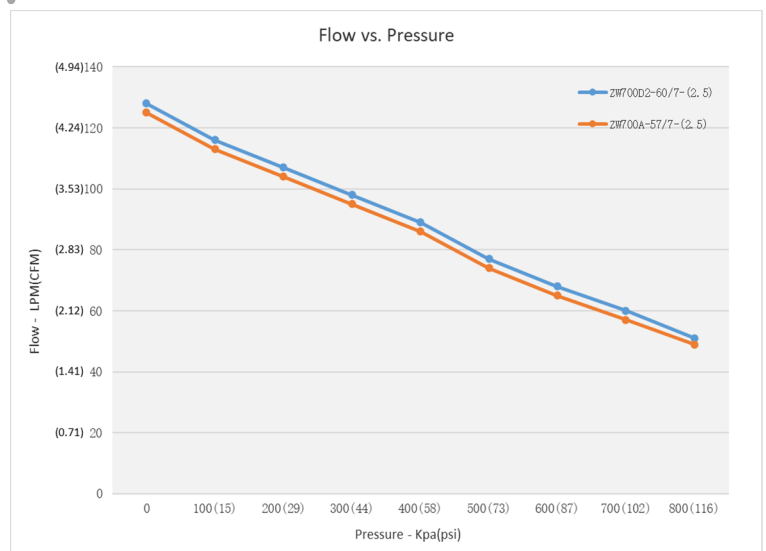
- Permanently lubricated bearings
- Oil-less, non-lubricated cup and cylinder
- Long-life cup design
- Thin wall cylinder for good heat transfer
- Stainless steel valves
- Capacitor as standard
- Field service ability
- Recoverable thermally protected motor
- Other voltage and configuration available upon request

Specifications

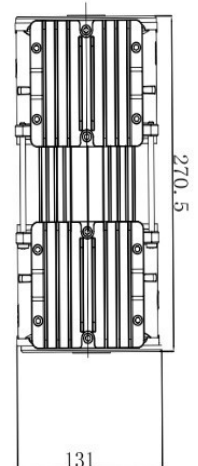
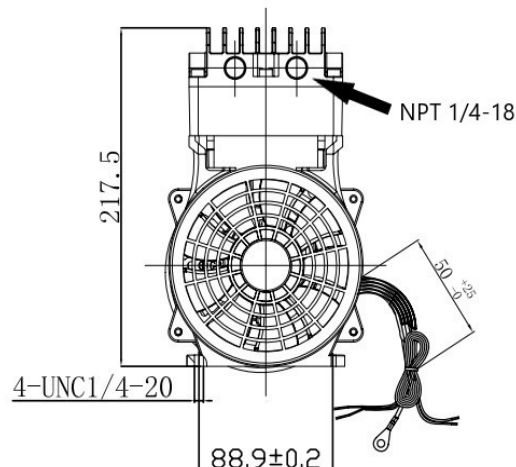
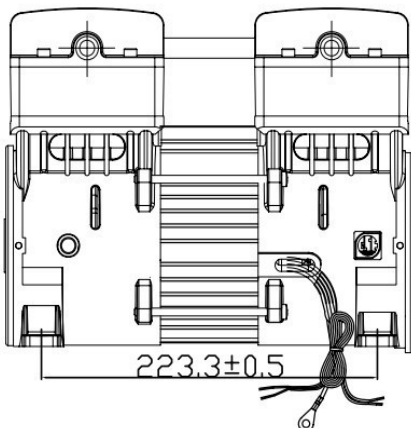
Model	ZW700A-57/7-(2.5)	ZW700D2-60/7-(2.5)
Rated Voltage	220V/50Hz	115V/60Hz
Rated Input Power	840W (1.13HP)	840W (1.13HP)
Input Current	4.2A	7.5A
Air Flow at rated Pressure	57LPM@7bar 2.01CFM@102psi	60LPM@7bar 2.12CFM@102psi
Max. Continuous Pressure	7bar (102psi)	7bar (102psi)
Max. Intermitt Pressure	8bar (116psi)	8bar (116psi)
Noise Level	70dBA	72dBA
Restart Pressure	50Kpa (7.3psi)	30Kpa (4.4psi)
Ambinet Temperature	5-40°C (41-104°F)	5-40°C (41-104°F)
Insulation Class	B	B
Insulation Resistance	> 500M ohm	> 500M ohm
Thermal Protect	145±5°C (293±9°F)	145±5°C (293±9°F)
Capacitor Included	25µF	80µF
Weight	11.5kg (25.4lbs)	11.5kg (25.4lbs)

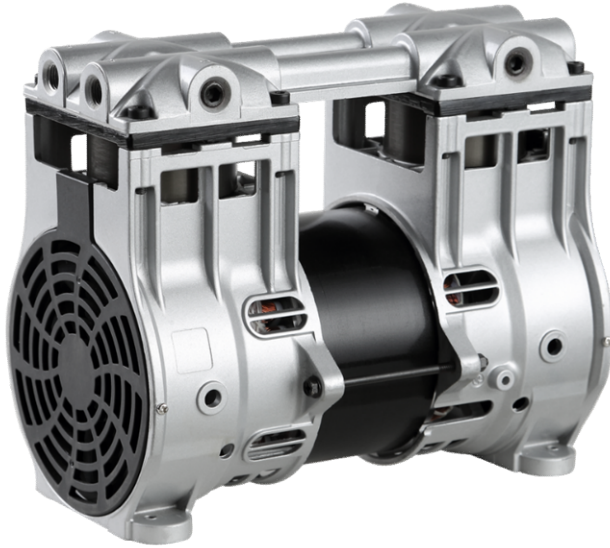
The information presented in this material is based on technical data and test results of nominal units. Its is believed to be accurate and reliable and is offered as an aid to help in the selection of GSE products. It is the responsibility of the user to determine the suitability of the product for their intended use and the user assumes all risk and liability whatsoever in connection therewith. GSE does not warrant, guarantee or assume any obligation or liability in connection with this information.

Performance Chart



Technical Drawings





Twin Headed Rocking Piston

ZW700 (B) Series

Open Flow **130lpm(4.59cfm)**

Max. Pressure (INT.) **11bar(160psi)**

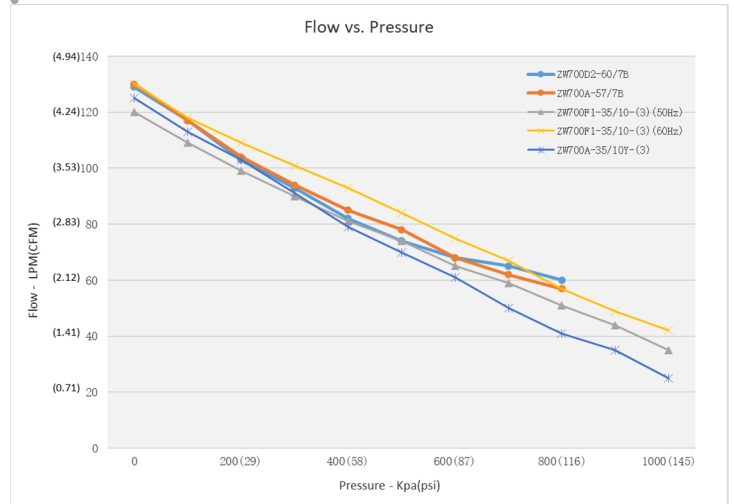
Max. Vacuum **-880mbar(26"Hg)**

- Permanently lubricated bearings
- Oil-less, non-lubricated cup and cylinder
- Long-life cup design
- Thin wall cylinder for good heat transfer
- Stainless steel valves
- Capacitor as standard
- Field service ability
- Recoverable thermally protected motor
- Other voltage and configuration available upon request

Specifications

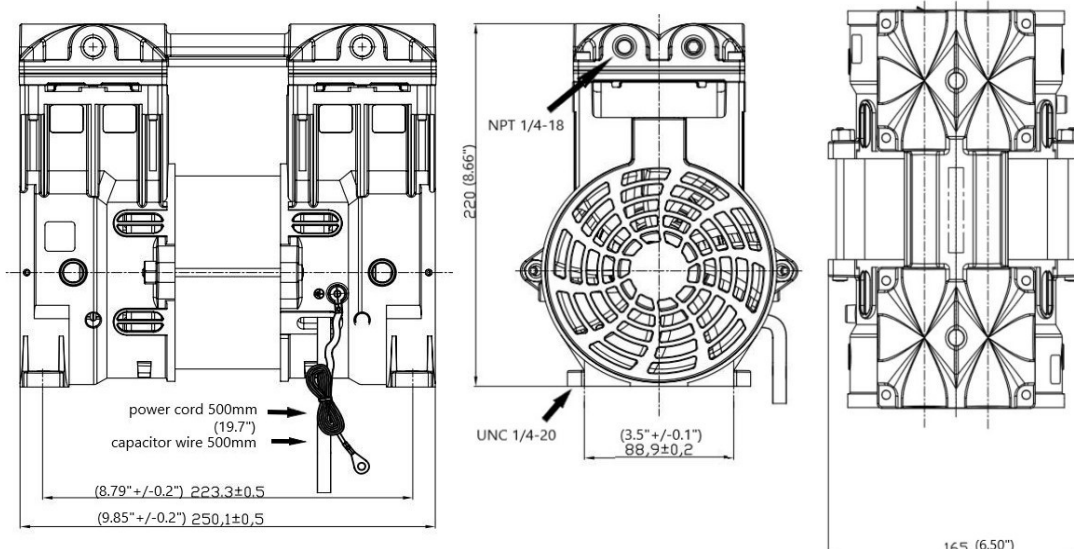
Model	ZW700A-57/7B	ZW700D2-60/7B	ZW700F1-35/10-(3)	ZW700A-35/10Y-(3)
Rated Voltage	220V/50Hz	115V/60Hz	230V/50/60Hz	220V/50Hz
Rated Input Power	800W (1.07HP)	830W (1.11HP)	800/900W (1.07/1.21HP)	800W (1.07HP)
Input Current	3.7A	7.3A	4.0/4.5A	4.0A
Air Flow at rated Pressure	62LPM@7bar 2.19CFM@102psi	65LPM@7bar 2.30CFM@102psi	35/40LPM@10bar 1.24/1.41CFM@145psi	25LPM@10bar 0.88CFM@145psi
Max. Continuous Pressure	7bar (102psi)	7bar (102psi)	10bar (145psi)	10bar (145psi)
Max. Intermit Pressure	8bar (116psi)	8bar (116psi)	11bar (160psi)	11bar (160psi)
Noise Level	72dBA	72dBA	72/75dBA	74dBA
Restart Pressure	0Kpa (0psi)	0Kpa (0psi)	0Kpa (0psi)	700Kpa (102psi)
Ambinet Temperature	10-40°C (50-104°F)	10-40°C (50-104°F)	0-40°C (32-104°F)	0-40°C (32-104°F)
Insulation Class	B	B	B	B
Insulation Resistance	> 500M ohm	> 500M ohm	> 500M ohm	> 500M ohm
Thermal Protect	145±5°C (293±9°F)	145±5°C (293±9°F)	145±5°C (293±9°F)	145±5°C (293±9°F)
Capacitor Included	25µF	80µF	25µF	30µF
Weight	11.5kg (25.4lbs)	11.5kg (25.4lbs)	13.5kg (29.8lbs)	13.5kg (29.8lbs)

Performance Chart



The information presented in this material is based on technical data and test results of nominal units. It is believed to be accurate and reliable and is offered as an aid to help in the selection of GSE products. It is the responsibility of the user to determine the suitability of the product for their intended use and the user assumes all risk and liability whatsoever in connection therewith. GSE does not warrant, guarantee or assume any obligation or liability in connection with this information.

Technical Drawings





Twin Headed Rocking Piston

ZW700 3rd Gen Series

Open Flow **120lpm (4.2cfm)**

Max. Pressure (INT.) **8bar (116psi)**

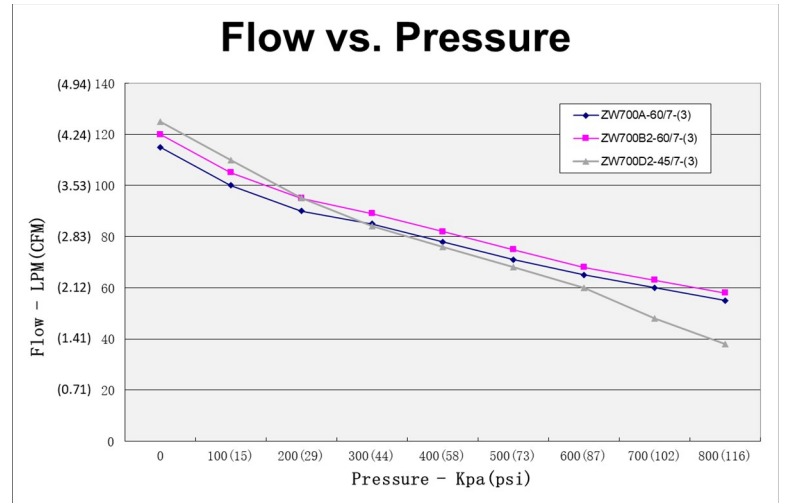
Max. Vacuum **-880mbar (26"Hg)**

- Permanently lubricated bearings
 - Oil-less, non-lubricated cup and cylinder
 - Long-life cup design
 - Thin wall cylinder for good heat transfer
 - Stainless steel valves
 - Capacitor as standard
 - Field service ability
 - Recoverable thermally protected motor
 - Back pressure restart option
- Other voltage and configuration available upon request ●

Specifications

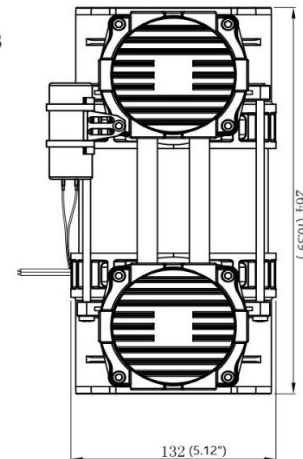
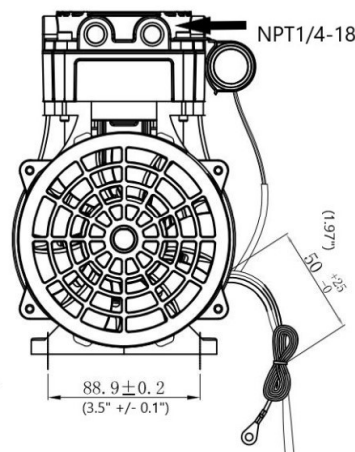
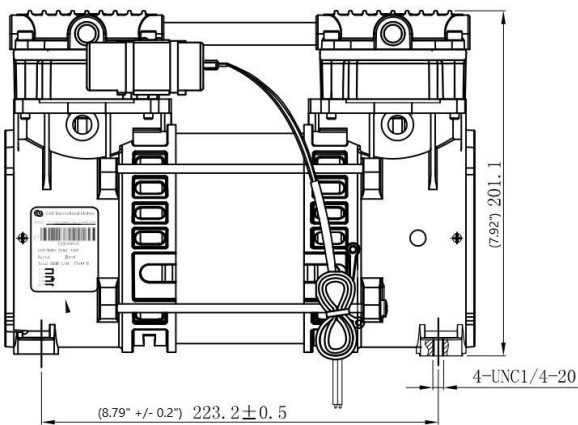
Model	ZW700A-60/7-(3)	ZW700B2-60/7-(3)	ZW700D2-45/7Y-(3)
Rated Voltage	220V/50Hz	110V/60Hz	115V/60Hz
Rated Input Power	820W (1.10HP)	850W (1.14HP)	850W (1.14HP)
Input Current	3.8A	7.9A	7.9A
Air Flow at rated Pressure	60LPM@7bar (2.12CFM@102psi)	60LPM@7bar (2.12CFM@102psi)	43LPM@7bar (1.52CFM@102psi)
Max. Continuous Pressure	7bar (102psi)	7bar (102psi)	7bar (102psi)
Max. Intermit Pressure	8bar (116psi)	8bar (116psi)	8bar (116psi)
Noise Level	71dBA	72dBA	72dBA
Restart Pressure	0Kpa (0psi)	0Kpa (0psi)	700Kpa (102psi)
Ambient Temperature	10-40°C (50-104°F)	10-40°C (50-104°F)	10-40°C (50-104°F)
Insulation Class	B	B	B
Insulation Resistance	> 500M ohm	> 500M ohm	> 500M ohm
Thermal Protect	145±5°C (293±9°F)	145±5°C (293±9°F)	145±5°C (293±9°F)
Capacitor Included	25µF	80µF	80µF
Weight	9.7kg (21.4lbs)	9.6kg (21.2lbs)	9.6kg (21.2lbs)

Performance Chart



The information presented in this material is based on technical data and test results of nominal units. It is believed to be accurate and reliable and is offered as an aid to help in the selection of GSE products. It is the responsibility of the user to determine the suitability of the product for their intended use and the user assumes all risk and liability whatsoever in connection therewith. GSE does not warrant, guarantee or assume any obligation or liability in connection with this information.

Technical Drawings





+1 (920) 234 5113 
 +852 2635 2285 
 +52 (55) 55 74 20 76 
 +44 7716 825015 
 email: info@gseint.com
 web: www.gseint.com



Twin Headed Rocking Piston

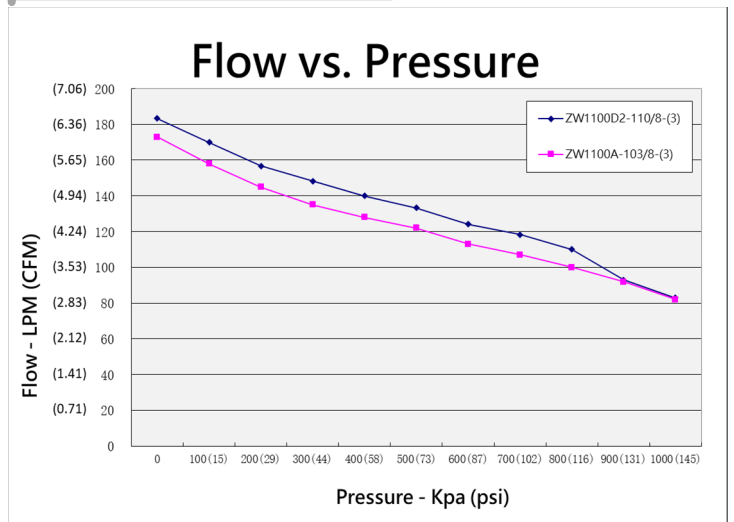
ZW1100 (A)
 Open Flow **183lpm(6.46 cfm)**
 Max. Pressure (INT.) **10bar(145 psi)**
 Max. Vacuum **-850mbar(25.1"Hg)**

- Permanently lubricated bearings
- Oil-less, non-lubricated cup and cylinder
- Long-life cup design
- Thin wall cylinder for good heat transfer
- Stainless steel valves
- Capacitor as standard
- Field service ability
- Recoverable thermally protected motor
- Other voltage and configuration available upon request

Specifications

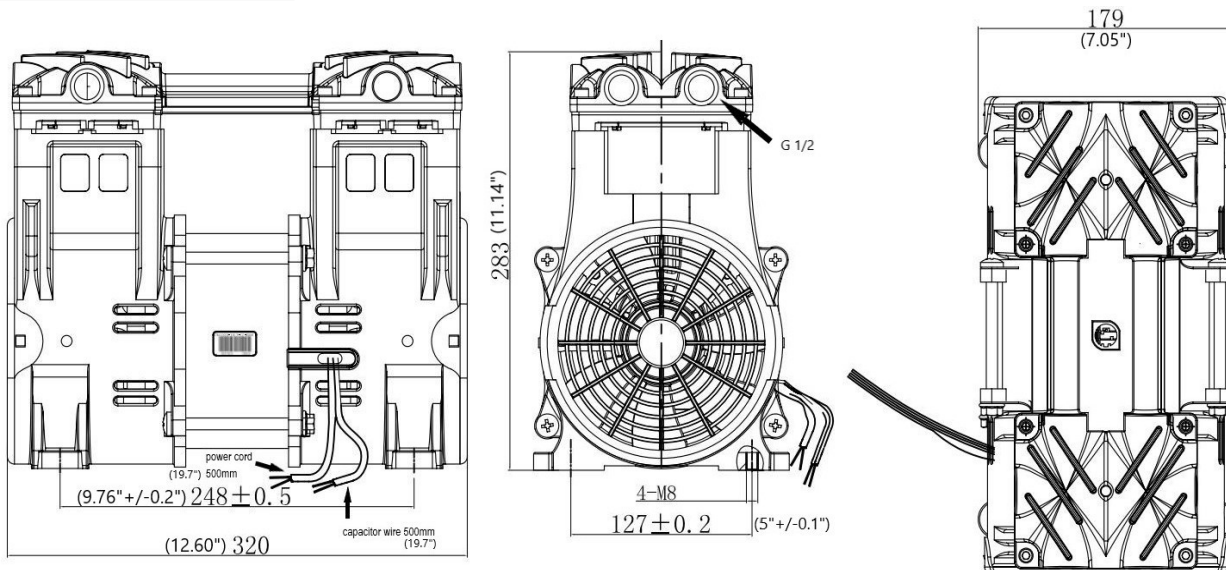
Model	ZW1100A-103/8-(3)	ZW1100D2-110/8-(3)
Rated Voltage	220V/50Hz	115V/60Hz
Rated Input Power	1300W (1.74HP)	1650W (2.21HP)
Input Current	6A	14.5A
Air Flow at rated Pressure	103LPM@8bar (3.64CFM@116psi)	110LPM@8bar (3.88CFM@116psi)
Max. Continuous Pressure	9bar (131psi)	9bar (131psi)
Max. Intermit Pressure	10bar (145psi)	10bar (145psi)
Noise Level	84dBA	86dBA
Restart Pressure	0Kpa (0psi)	0Kpa (0psi)
Ambient Temperature	5-40°C (41-104°F)	5-40°C (41-104°F)
Insulation Class	B	B
Insulation Resistance	> 500M ohm	> 500M ohm
Thermal Protect	145±5°C (293±9°F)	145±5°C (293±9°F)
Capacitor Included	30µF	100µF
Weight	17.6kg (38.8lbs)	17.6kg (38.8lbs)

Performance Chart



The information presented in this material is based on technical data and test results of nominal units. It is believed to be accurate and reliable and is offered as an aid to help in the selection of GSE products. It is the responsibility of the user to determine the suitability of the product for their intended use and the user assumes all risk and liability whatsoever in connection therewith. GSE does not warrant, guarantee or assume any obligation or liability in connection with this information.

Technical Drawings





+1 (920) 234 5113 
 +852 2635 2285 
 +52 (55) 55 74 20 76 
 +44 7716 825015 
 email: info@gseint.com
 web: www.gseint.com



Twin Headed Rocking Piston

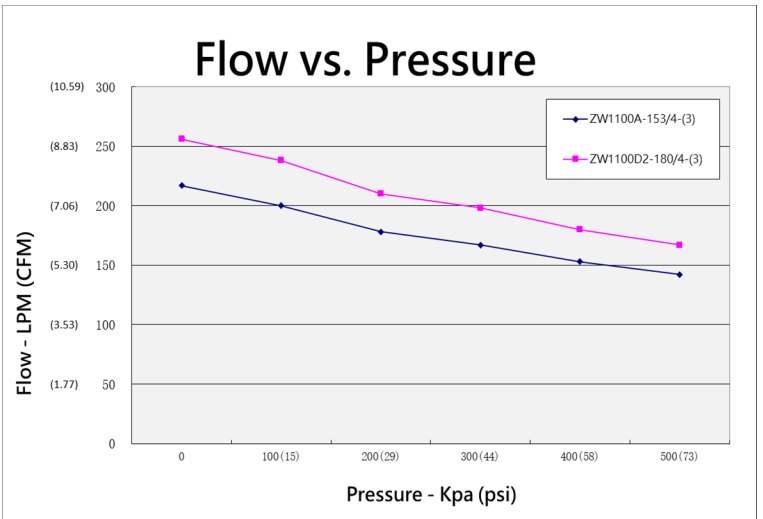
ZW1100(B)
Open Flow 256lpm(9.04 cfm)
Max. Pressure (INT.) 5bar(73 psi)
Max. Vacuum -880mbar(26"Hg)

- Permanently lubricated bearings
- Oil-less, non-lubricated cup and cylinder
- Long-life cup design
- Thin wall cylinder for good heat transfer
- Stainless steel valves
- Capacitor as standard
- Field service ability
- Recoverable thermally protected motor
- Other voltage and configuration available upon request

Specifications

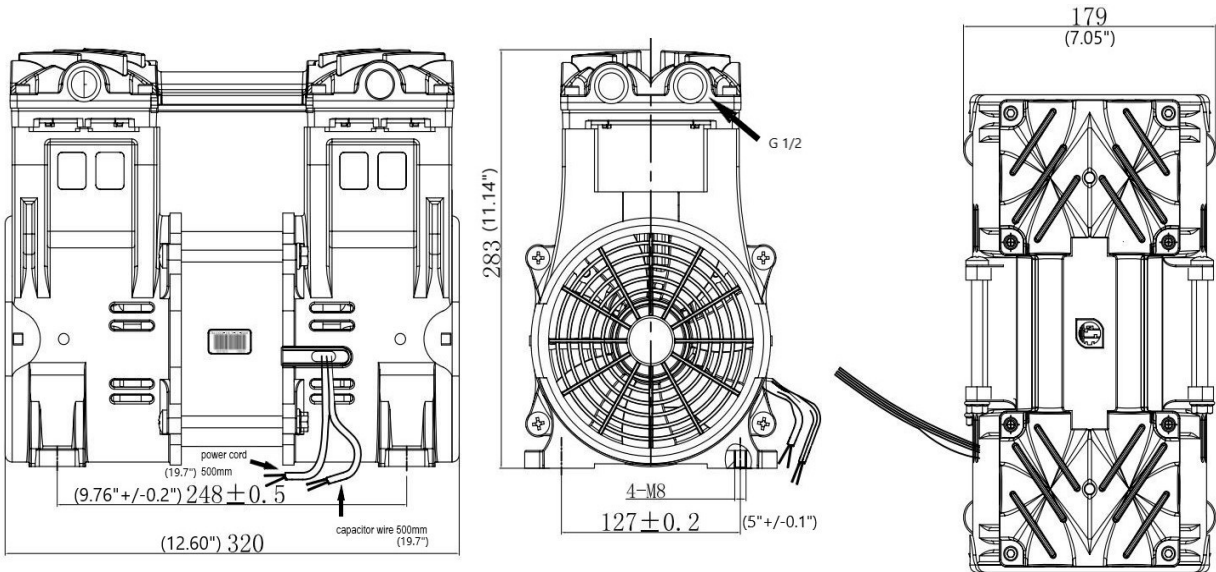
Model	ZW1100A-153/4-(3)	ZW1100D2-180/4-(3)
Rated Voltage	220V/50Hz	115V/60Hz
Rated Input Power	1300W (1.74HP)	1600W (2.14HP)
Input Current	6A	14.5A
Air Flow at rated Pressure	153LPM@4bar (5.40CFM@58psi)	180LPM@4bar (6.36CFM@58psi)
Max. Continuous Pressure	4bar (58psi)	4bar (58psi)
Max. Intermit Pressure	5bar (73psi)	5bar (73psi)
Noise Level	80dBA	82dBA
Restart Pressure	0Kpa (0psi)	0Kpa (0psi)
Ambient Temperature	5-40°C (41-104°F)	5-40°C (41-104°F)
Insulation Class	B	B
Insulation Resistance	> 500M ohm	> 500M ohm
Thermal Protect	145±5°C (293±9°F)	145±5°C (293±9°F)
Capacitor Included	30µF	100µF
Weight	17.6kg (38.8lbs)	17.6kg (38.8lbs)

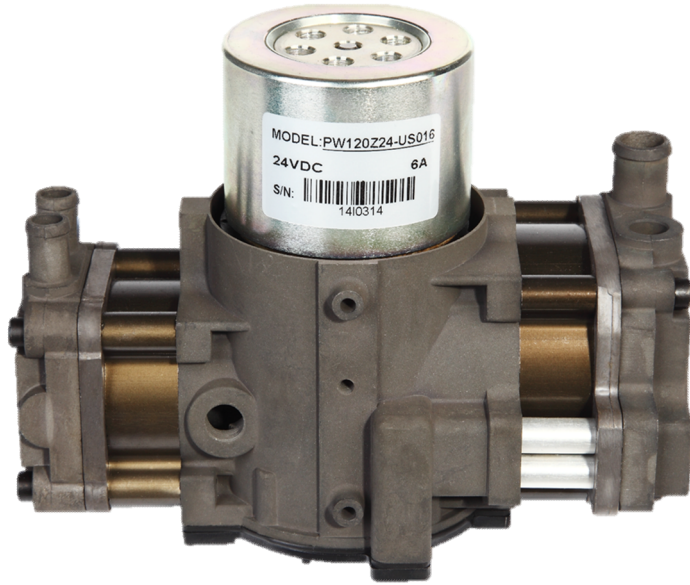
Performance Chart



The information presented in this material is based on technical data and test results of nominal units. It is believed to be accurate and reliable and is offered as an aid to help in the selection of GSE products. It is the responsibility of the user to determine the suitability of the product for their intended use and the user assumes all risk and liability whatsoever in connection therewith. GSE does not warrant, guarantee or assume any obligation or liability in connection with this information.

Technical Drawings





Twin Headed Rocking Piston

PW120Z24

Open Flow **42.1lpm (1.49cfm)**

Max. Pressure (INT.) **1.6bar (23psi)**

Max. Vacuum **-862mbar (25.4"Hg)**

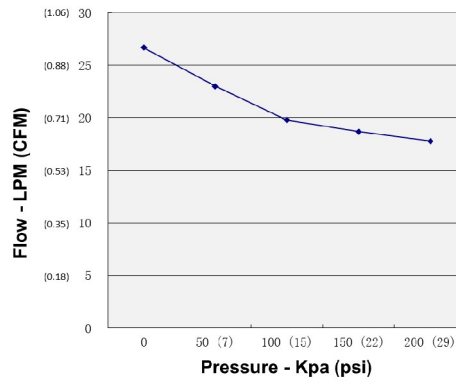
- Permanently lubricated bearings
- Oil-less, non-lubricated cup and cylinder
- Provide pressure and vacuum synchronously
- BLDC motor with external control board
- Compact but high efficiency
- Low noise level (66 dBA)

Specifications

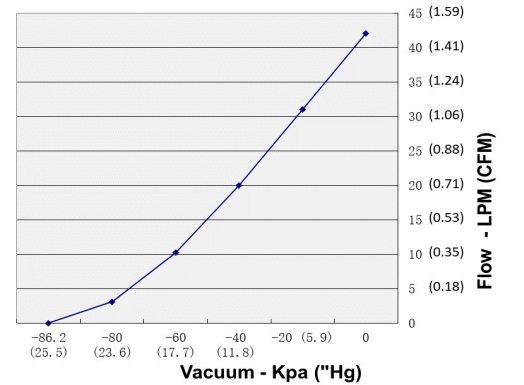
Model	PW120Z24
Rated Voltage	24VDC
Voltage Range	24VDC
Rated Input Power	145W (0.19HP)
Rated Input Current	6.1A
Air Flow at rated Pressure	12LPM (0.42CFM)
Max. Continuous Pressure	1.3bar (18.9psi)
Max. Intermitt Pressure	1.6bar (23.2psi)
Noise Level	58dBA
Ambinet Temperature	0-40°C (32-104°F)
Insulation Class	B
Voltage Protect	<9V, >15V
Current Protect	8.5A
Motor	BLDC
Weight	1.41kg (3.1lbs)

Performance Chart

Flow vs. Pressure

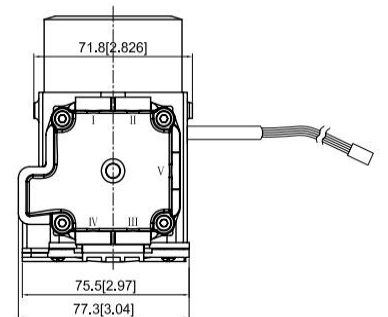
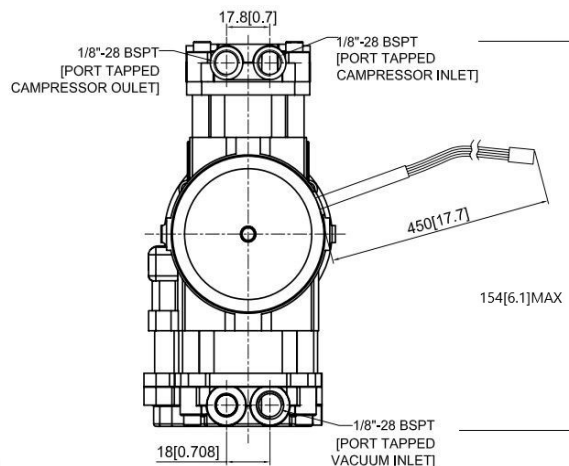
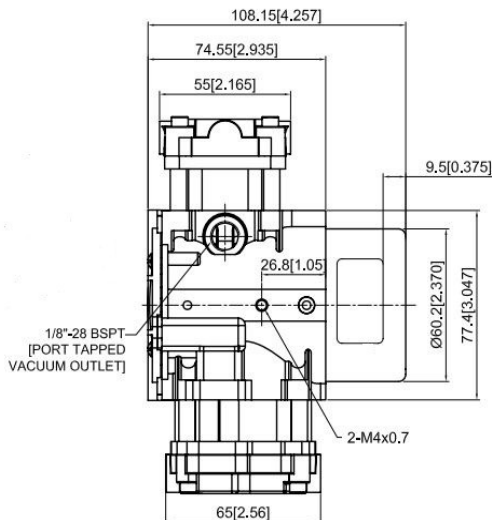


Flow vs. Vacuum



The information presented in this material is based on technical data and test results of nominal units. Its is believed to be accurate and reliable and is offered as an aid to help in the selection of GSE products. It is the responsibility of the user to determine the suitability of the product for their intended use and the user assumes all risk and liability whatsoever in connection therewith. GSE does not warrant, guarantee or assume any obligation or liability in connection with this information.

Technical Drawings





2 Gallon Hot-Dog Tank Oil-Free Air Compressor

USA: +1 (920) 234 5113

HKG: +852-9583-9300

Email: info@gseint.com

Oil-Free



ZW9TK-100/7

Air Flow 3.6 CFM

Pressure 100 PSI

Heavy Duty

7000+ Hours Working Life

Technical Specifications

MODEL	ZW9TK-100/7
Air Displacement	3.6 CFM Open 0.90 CFM @ 100 PSI
Air Delivery	Max. pressure to 100 PSI
Pressure Switch	Starts compressor @ 70 PSI Stops compressor @ 100 PSI
Motor	3/4 HP electric motor Permanent split capacitor
Tanks Capacity	2 gallons
Max Tank Pressure	110 PSI
Shipping Weight	48 lb
Net Weight	36 lb
Dimensions Unit	19.7 x 7.1 x 20.1 in
L x W x H (in.) Ctn.	20.5 x 9.5 x 21.7 in
Low Amp Draw	6.2
Recovery Time	27 sec (70 PSI to 100 PSI) 60 sec (0 PSI to 100 PSI)
RPM	1410
dB Rating @ 3 ft	58 dB
Finish Guns	1 - 2

GSE 2 Gallon Hot-Dog Tank Air Compressor

“Contractor Grade”

- Quick-connect for universal use
- Well-balanced to prevent vibration
- Large regulator knob for easy operation
- Drain valve for water removal
- Rubber feet for shockproof and skidproof operation
- Relief valve @ 100 PSI to prevent tank and compressor over-pressurization.
- Soft grip handle for convenient transportation
- Dual-Gauges for tools and tank pressure
- Whisper-Sound Technology operation 58 dBA
- Extended-Life, Up to 7000 hrs working life
- Moist collector

The information presented in this material is based on technical data and test results of nominal units. It is believed to be accurate and reliable and is offered as an aid to help in the selection of GSE products. It is the responsibility of the user to determine the suitability of the product for their intended use and the user assumes all risk and liability whatsoever in connection therewith. GSE does not warrant, guarantee, or assume any obligation or liability in connection with this information.