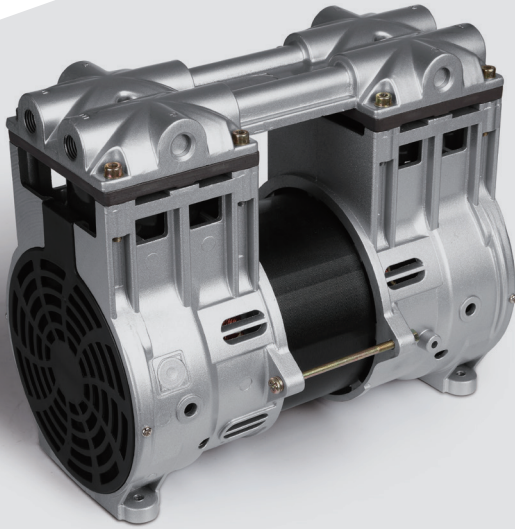




+1 (920) 234 5113 
 +852 2635 2285 
 +44 (0) 7506 414504 
 +52 1 (442) 343 3172 
 email: info@gseint.com
 web: www.gseint.com



Twin-Headed Rocking Piston

ZW700 B Series

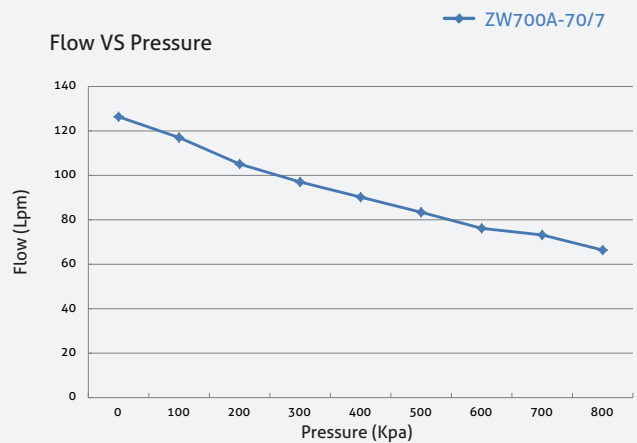
Max. Flow **4.5 cfm (126 lpm)**
 Max. Pressure **116 psi (8 bar)**
 Max. Vacuum **26"Hg (880 mmHg)**

- Permanently lubricated bearings
- Oil-less, non-lubricated cup and cylinder
- Long-life cup design
- Thin wall cylinder for good heat transfer
- Stainless-steel valves
- Capacitor as standard
- Field service ability
- Recoverable thermally protected motor
- Other voltages and configurations available upon request

Specification

	ZW700A-70/7	ZW700B2-60/7B
Model Number	ZW700A-70/7	ZW700B2-60/7B
Open Flow	4.5 cfm (126 lpm)	3.9 cfm (110 lpm)
Max. Continuous Pressure	116 psi (8 bar)	116 psi (8 bar)
Max. Continuous Vacuum	26"Hg (880 mmHg)	26"Hg (880 mmHg)
Current At Rated Load	3.8A	7.7A
Power At Rated Load	820W	840W
Motor Type	PSC	PSC
Voltage/Frequency	220V/50Hz	110V/60Hz
Starting Current	10.5A	22A
Net Weight	25.4 lbs (11.5kg)	25.4 lbs (11.5kg)

Performance Chart



The information presented in this material is based on technical data and test results of nominal units. Its is believed to be accurate and reliable and is offered as an aid to help in the selection of GSE products. It is the responsibility of the user to determine the suitability of the product for their intended use and the user assumes all risk and liability whatsoever in connection therewith. GSE does not warrant, guarantee or assume any obligation or liability in connection with this information.

Technical Drawings

