

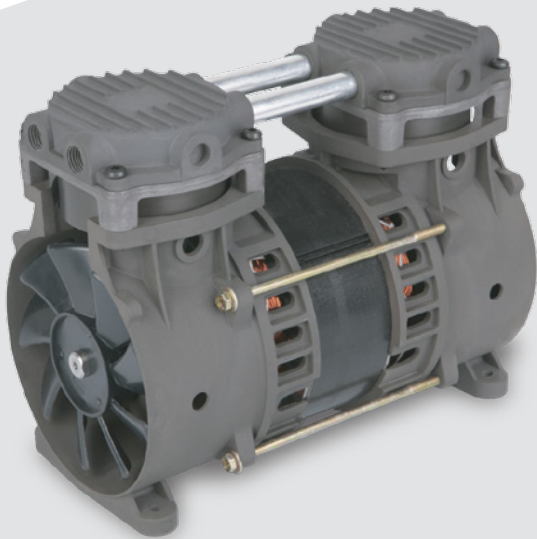




+1 (920) 234 5113 
 +852 2635 2285 
 +44 (0) 7506 414504 
 +52 1 (442) 343 3172 
 email: info@gseint.com
 web: www.gseint.com



Twin-Headed Rocking Piston

ZW400

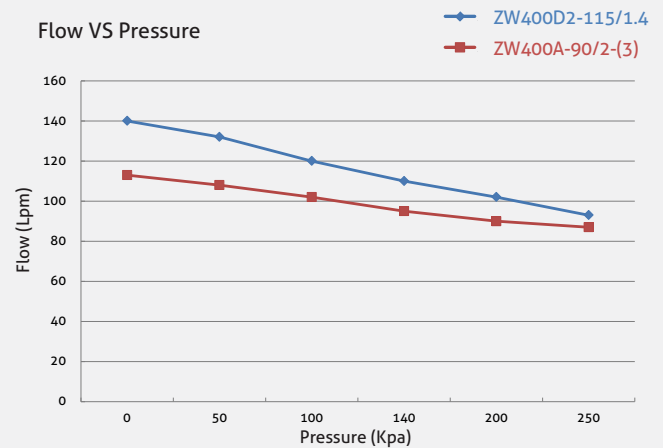
Max. Flow **4.8 cfm (135 lpm)**
 Max. Pressure **30 psi (2.1 bar)**
 Max. Vacuum **27"Hg (910 mbar)**

- Permanently lubricated bearings
- Oil-less, non-lubricated cup and cylinder
- Long-life cup design
- Thin wall cylinder for good heat transfer
- Stainless-steel valves
- Capacitor as standard
- Field service ability
- Recoverable thermally protected motor
- Other voltages and configurations available upon request

Specification

| Model Number | ZW400D2-115/1.4 | ZW400A-90/2-(3) |
|--------------------------|-------------------|--------------------|
| Open Flow | 4.8 cfm (135 lpm) | 4 cfm (113 lpm) |
| Max. Continuous Pressure | 30 psi (2.1 bar) | 36psi (2.5 bar) |
| Max. Continuous Vacuum | 27"Hg (910 mbar) | 24.8"Hg (840 mbar) |
| Current At Rated Load | 6.1A | 2.55A |
| Power At Rated Load | 620W | 510W |
| Motor Type | PSC | PSC |
| Voltage/Frequency | 115V/60Hz | 220V/50Hz |
| Starting Current | 19A | 7A |
| Net Weight | 16.5 lbs (7.1kg) | 14.3 lbs (6.5kg) |

Performance Chart



The information presented in this material is based on technical data and test results of nominal units. Its is believed to be accurate and reliable and is offered as an aid to help in the selection of GSE products. It is the responsibility of the user to determine the suitability of the product for their intended use and the user assumes all risk and liability whatsoever in connection therewith. GSE does not warrant, guarantee or assume any obligation or liability in connection with this information.

Technical Drawings

