



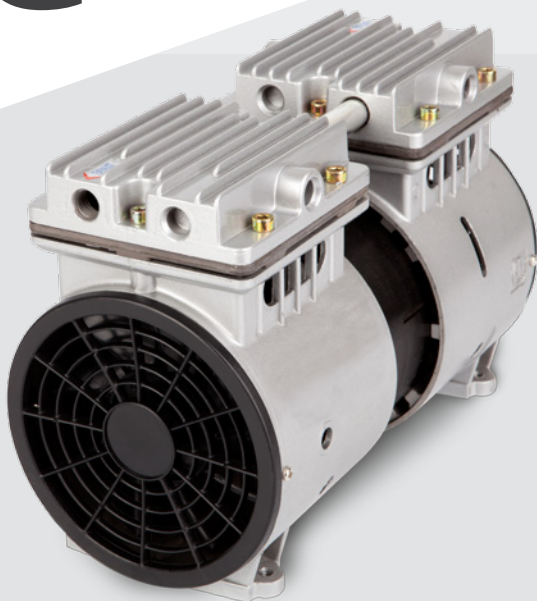




+1 (920) 234 5113 
 +852 2635 2285 
 +44 (0) 7506 414504 
 +52 1 (442) 343 3172 
 email: info@gseint.com
 web: www.gseint.com



Twin-Headed Rocking Piston

ZW370

Max. Flow **3.6 cfm (103 lpm)**
 Max. Pressure **73 psi (5 bar)**
 Max. Vacuum **29" Hg (980 mbar)**

- Permanently lubricated bearings
- Oil-less, non-lubricated cup and cylinder
- Long-life cup design
- Thin wall cylinder for good heat transfer
- Stainless-steel valves
- Capacitor as standard
- Field service ability
- Thermally protected motor

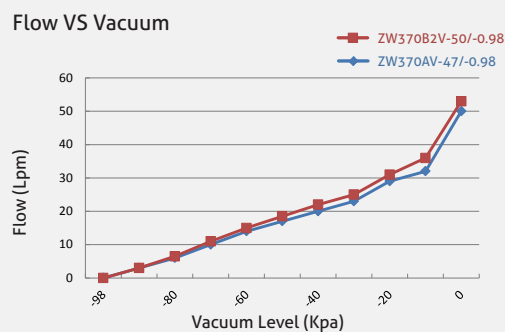
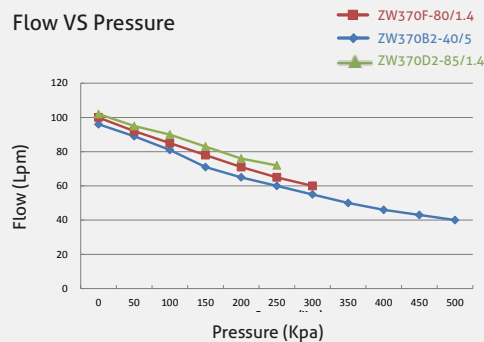
Other voltages and configurations available upon request •

Specification

Model Number	ZW370 B2-40/5	ZW370 F-80/1.4	ZW370 D2-85/1.4	ZW370 AV-47/-0.98	ZW370 B2V-50/-0.98
Open Flow	3.4 cfm (96 lpm)	3.5 cfm (100 lpm)	3.6 cfm (103 lpm)	1.6 cfm (47 lpm)	1.5 cfm (50 lpm)
Max. Continuous Pressure	73 psi (5 bar)	44 psi (3 bar)	38 psi (2.6 bar)	N/A	N/A
Max. Continuous Vacuum	N/A	25" Hg (850 mbar)	25" Hg (850 mbar)	29" Hg (980 mbar)	29" Hg (980 mbar)
Current At Rated Load	4.8A	1.6A	3.8A	1.1A	2.8A
Power At Rated Load	520W	360W	410W	219W	280W
Motor Type	PSC	PSC	PSC	PSC	PSC
Voltage/Frequency	110V/60Hz	220V/50Hz	115V/60Hz	220V/50Hz	110V/60Hz
Starting Current	12A	4.5A	12A	1.1A	2.8A
Net Weight	16 lbs (7.3 kg)	16 lbs (7.3 kg)	16 lbs (7.3 kg)	17.2 lbs (7.8 kg)	17.2 lbs (7.8 kg)

The information presented in this material is based on technical data and test results of nominal units. It is believed to be accurate and reliable and is offered as an aid to help in the selection of GSE products. It is the responsibility of the user to determine the suitability of the product for their intended use and the user assumes all risk and liability whatsoever in connection therewith. GSE does not warrant, guarantee or assume any obligation or liability in connection with this information.

Performance Chart



Technical Drawings

